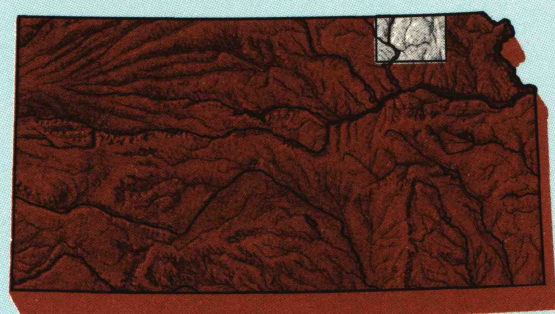


Blue Rapids KANSAS

1:100 000-scale
planimetric map



30 X 60 MINUTE QUADRANGLE
SHOWING

- Elevations in meters
- Highways, roads and other manmade structures
- Water features
- Woodland areas
- Geographic names



GEOLOGICAL SURVEY

1986

Produced by the United States Geological Survey
Compiled from USGS 1:250 000-scale topographic maps dated 1966-1983. Planimetry revised from aerial photographs taken 1982 and other source data. Revised information not field checked. Map edited 1986.

Projection and 10 000-meter grid, zone 14
Universal Transverse Mercator
25 000-foot grid ticks based on Kansas coordinate system, north zone. 1927 North American Datum
To place on the predicted North American Datum 1983 move the projection lines 3 meters north and 25 meters east.
There may be private inholdings within the boundaries of the National or State reservations shown on this map.

NATIONAL GEODETIC VERTICAL DATUM OF 1929
ELEVATIONS SHOWN TO THE NEAREST METER

THIS MAP COMPLIES WITH NATIONAL MAP ACCURACY STANDARDS

CONVERSION TABLE		DECLINATION DIAGRAM	ADJOINING MAPS							
Meters	Feet		1	2	3	4	5	6	7	8
1	3.2808									
2	6.5617									
3	9.8425									
4	13.1234									
5	16.4042									
6	19.6850									
7	22.9659									
8	26.2467									
9	29.5275									
10	32.8084									
To convert meters to feet multiply by 3.2808		UTM grid convergence (GM) and true magnetic declination (MD) at center of map Diagram is approximate	1 Fairbury 2 Beatrice 3 Falls City 4 Concordia 5 Archibald 6 Clay Center 7 Manhattan 8 Topinka							
To convert feet to meters multiply by 0.3048										

FOR SALE BY U.S. GEOLOGICAL SURVEY, DENVER, COLORADO 80225
OR RESTON, VIRGINIA 22092

USGS NMD HISTORICAL MAP

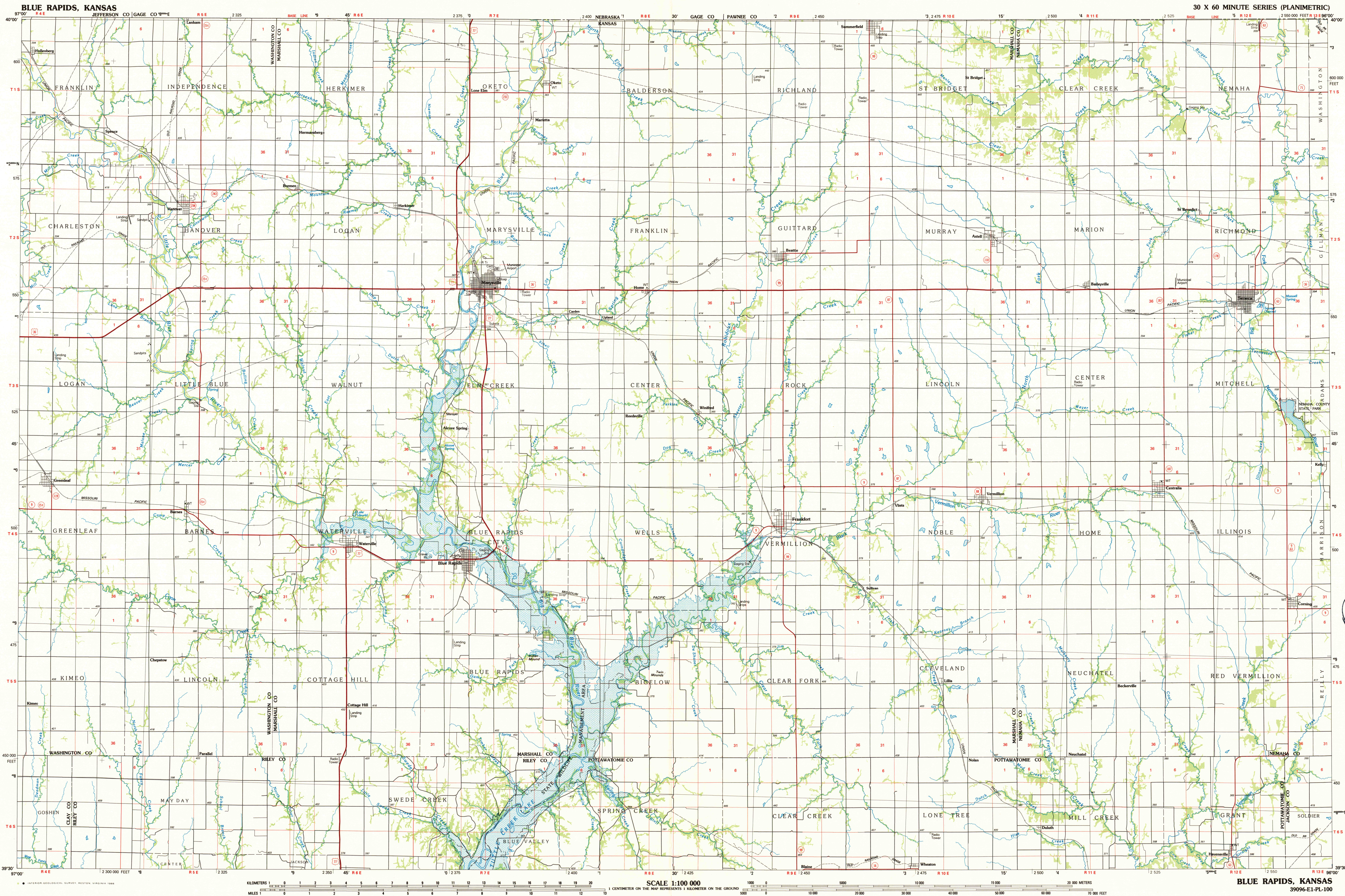
AUG 12 1986

REC'D FILE COPY

Topographic Map Symbols

Primary highway, hard surface	
Secondary highway, hard surface	
Light duty road, principal street, hard or improved surface	
Other road or street; trail	
Route marker: Interstate; U. S. State	
Railroad: standard gauge; narrow gauge	
Bridge: overpass; underpass	
Tunnel: road; railroad	
Built up area; locality; elevation	
Airport; landing field; landing strip	
National boundary	
State boundary	
County boundary	
National or State reservation boundary	
Land grant boundary	
U. S. public lands: range, township, section	
Range, township, section line, projected	
Power transmission line; pipeline	
Dam; dam with lock	
Cemetery; building	
Wellhead; water well; spring	
Mine shaft; adit or cave; mine, quarry; gravel pit	
Careground; picnic area; U. S. location monument	
Ruin; cliff dwelling	
Distorted surface: strip mine; lava; sand	
Contours: index; intermediate; supplementary	
Bathymetric contours: index; intermediate	
Stream, lake: perennial; intermittent	
Rapids, large and small; falls, large and small	
Area to be submerged; marsh, swamp	
Land subject to controlled inundation; woodland	
Scrub; mangrove	
Orchard; vineyard	

A pamphlet describing topographic maps is available on request



BLUE RAPIDS, KANSAS

39096-E1-PL-100

1986