

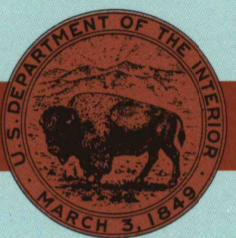
El Dorado KANSAS

1:100 000-scale
planimetric map



30 X 60 MINUTE QUADRANGLE
SHOWING

- Elevations in meters
- Highways, roads and other manmade structures
- Water features
- Woodland areas
- Geographic names



GEOLOGICAL SURVEY

1985

Produced by the United States Geological Survey

Compiled from USGS 1:24 000-scale topographic maps dated 1961-1979. Planimetry revised from aerial photographs taken 1981 and other source data. Revised information not field checked. Map edited 1985.

Projection and 10 000-meter grid, zone 14, Universal Transverse Mercator.
25 000-foot grid ticks based on Kansas coordinate system, south zone
1927 North American Datum
To place on the predicted North American Datum 1983, move the projection lines 25 meters east.

There may be private inholdings within the boundaries of the National or State reservations shown on this map.

NATIONAL GEODETIC VERTICAL DATUM OF 1929
ELEVATIONS SHOWN TO THE NEAREST METER

THIS MAP COMPLIES WITH NATIONAL MAP ACCURACY STANDARDS

Meters	Feet	DECLINATION DIAGRAM	ADJOINING MAPS
1	3 280		1 2 3
2	6 561		4 5
3	9 842		6 7 8
4	13 124		
5	16 405		
6	19 686		
7	22 967		
8	26 248		
9	29 529		
10	32 810		

To convert meters to feet multiply by 3.2808
To convert feet to meters multiply by 0.3048

UTM grid convergence (GN) and 1983 magnetic declination (MD) at center of map
Diagram is approximate

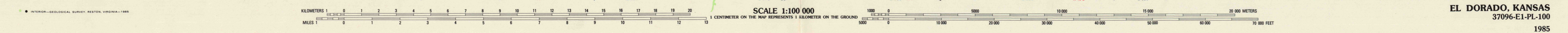
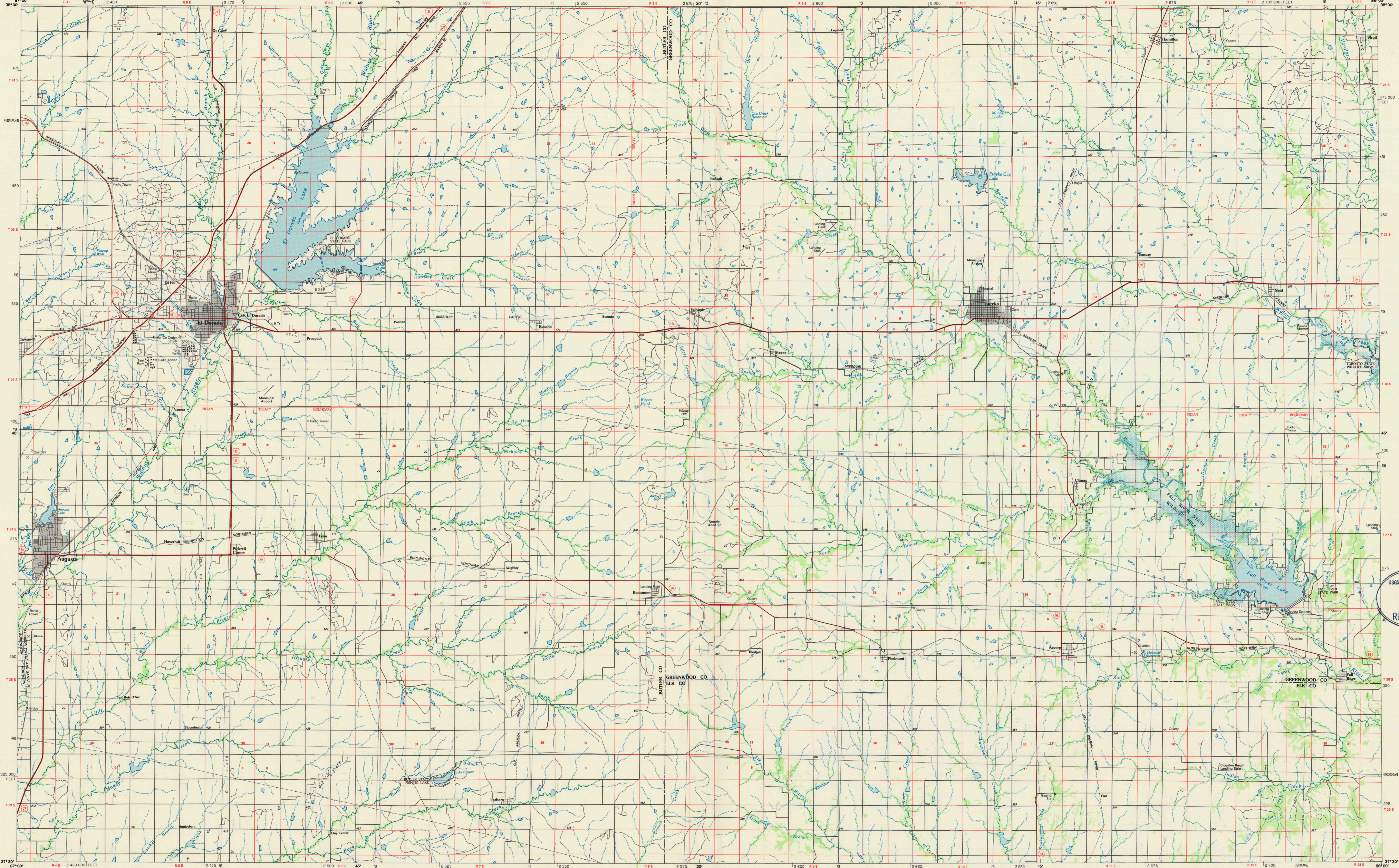
FOR SALE BY U. S. GEOLOGICAL SURVEY
DENVER, COLORADO 80225, OR RESTON, VIRGINIA 22092

USGS NMD HISTORICAL MAP
APR 16 1986
REC'D FILE COPY

Topographic Map Symbols

- Primary highway, hard surface
- Secondary highway, hard surface
- Light duty road, principal street, hard or improved surface
- Other road or street, trail
- Route marker: Interstate, U.S. State
- Railroad: standard gage; narrow gage
- Bridge: overpass; underpass
- Tunnel: road; railroad
- Built-up area, locality, elevation
- Airport, landing field, landing strip
- National boundary
- State boundary
- County boundary
- National or State reservation boundary
- Land grant boundary
- U.S. public lands survey: range, township, section
- Range, township, section line: protracted
- Power transmission line; pipeline
- Dam; dam with lock
- Cemetery; building
- Well: water well; spring
- Mine shaft; adit or cave; mine, quarry; gravel pit
- Campground; picnic area; U.S. location monument
- Ruin; cliff dwelling
- Disturbed surface: strip mine, lava, sand
- Contours: index; intermediate; supplementary
- Bathymetric contours: index; intermediate
- Stream, lake: perennial; intermittent
- Rapids, large and small; falls, large and small
- Area to be submerged; marsh, swamp
- Land subject to controlled inundation; woodland
- Scrub; mangrove
- Orchard; vineyard

A pamphlet describing topographic maps is available on request



EL DORADO, KANSAS
37096-E1-PL-100
1985