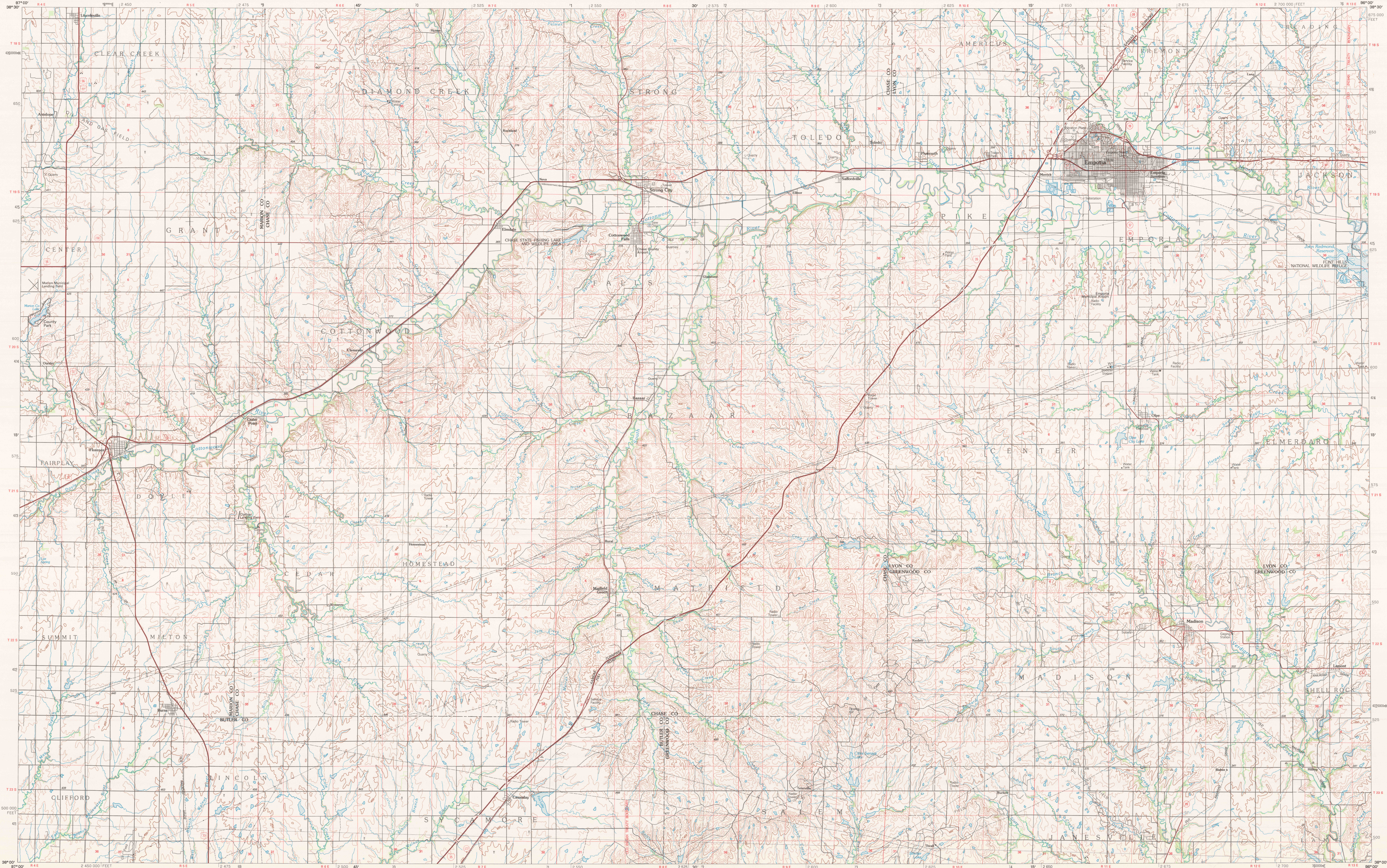


EMPORIA, KANSAS

30 X 60 MINUTE SERIES (TOPOGRAPHIC)



Emporia Kansas

1:100 000-scale metric topographic map

30 X 60 MINUTE QUADRANGLE SHOWING

- Contours and elevations in meters
- Highways, roads and other manmade structures
- Water features
- Woodland areas
- Geographic names

GEOLOGICAL SURVEY

1985
PHOTOINSPECTED 1985

Produced by the United States Geological Survey
 Compiled from USGS 1:24 000-scale topographic maps dated 1957-1979. Planimetry revised from aerial photographs taken 1981 and other source data. Revised information not field checked. Map edited 1985.

Projection and 10 000-meter grid, zone 14, Universal Transverse Mercator
 25 000-foot grid ticks based on Kansas coordinate system, south zone
 1927 North American Datum
 To place on the predicted North American Datum 1983, move the projection lines 1 meter north and 25 meters east. There may be private inholdings within the boundaries of the National or State reservations shown on this map.
 Map photoinspected using 1985 photographs
 No major culture or drainage changes found

CONTOUR INTERVAL 10 METERS
 NATIONAL GEODETIC VERTICAL DATUM OF 1929
 ELEVATIONS SHOWN TO THE NEAREST METER

THIS MAP COMPLIES WITH NATIONAL MAP ACCURACY STANDARDS

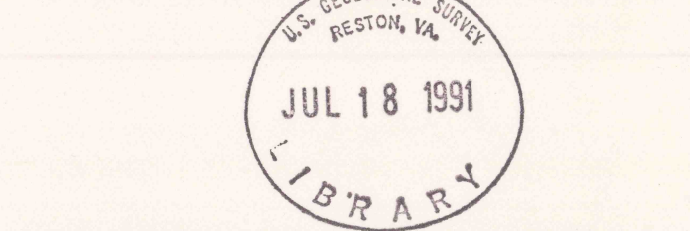
CONVERSION TABLE		DECLINATION DIAGRAM		ADJOINING MAPS	
Meters	Feet	GN	MN	1	2
1	3.2808		77°	1	3
2	6.5617			4	5
3	9.8425			7	8
4	13.1234				
5	16.4042				
6	19.6850				
7	22.9659				
8	26.2467				
9	29.5275				
10	32.8084				

To convert meters to feet multiply by 3.2808
 To convert feet to meters multiply by 0.3048

UTM grid convergence (GN) and magnetic declination (MN) at center of map
 Diagram is approximate

1 Salina
 2 Council Grove
 3 Lawrence
 4 Hutchinson
 5 Garnett
 6 Wichita
 7 El Dorado
 8 Chanute

FOR SALE BY U.S. GEOLOGICAL SURVEY
 DENVER, COLORADO 80225, OR RESTON, VIRGINIA 22092



Topographic Map Symbols

Primary highway, hard surface	
Secondary highway, hard surface	
Light duty road, principal street, hard or improved surface	
Other road or street, trail	
Route marker: Interstate, U.S., State	
Railroad, standard gauge, narrow gauge	
Bridge: overpass, underpass	
Tunnel: road, railroad	
Built up area, locality, elevation	
Airport: landing field, landing strip	
National boundary	
State boundary	
County boundary	
National or State reservation boundary	
Land grant boundary	
U.S. public lands survey: range, township, section	
Range, township; section line: protruded	
Power transmission line; pipeline	
Dam; dam with lock	
Cemetery; building	
Wooded; water well; spring	
Mine shaft: oil or coal; mine, quarry; gravel pit	
Campground; picnic area; U.S. location monument	
Ruins; cliff dwelling	
Distorted surface: strip mine, lava, sand	
Contours: index, intermediate, supplementary	
Barometric contours: index, intermediate	
Stream, lake: perennial, intermittent	
Rapids, large and small; falls, large and small	
Area to be submerged; marsh, swamp	
Land subject to controlled inundation; woodland	
Sand; mangrove	
Dredged; vineyard	

A pamphlet describing topographic maps is available on request