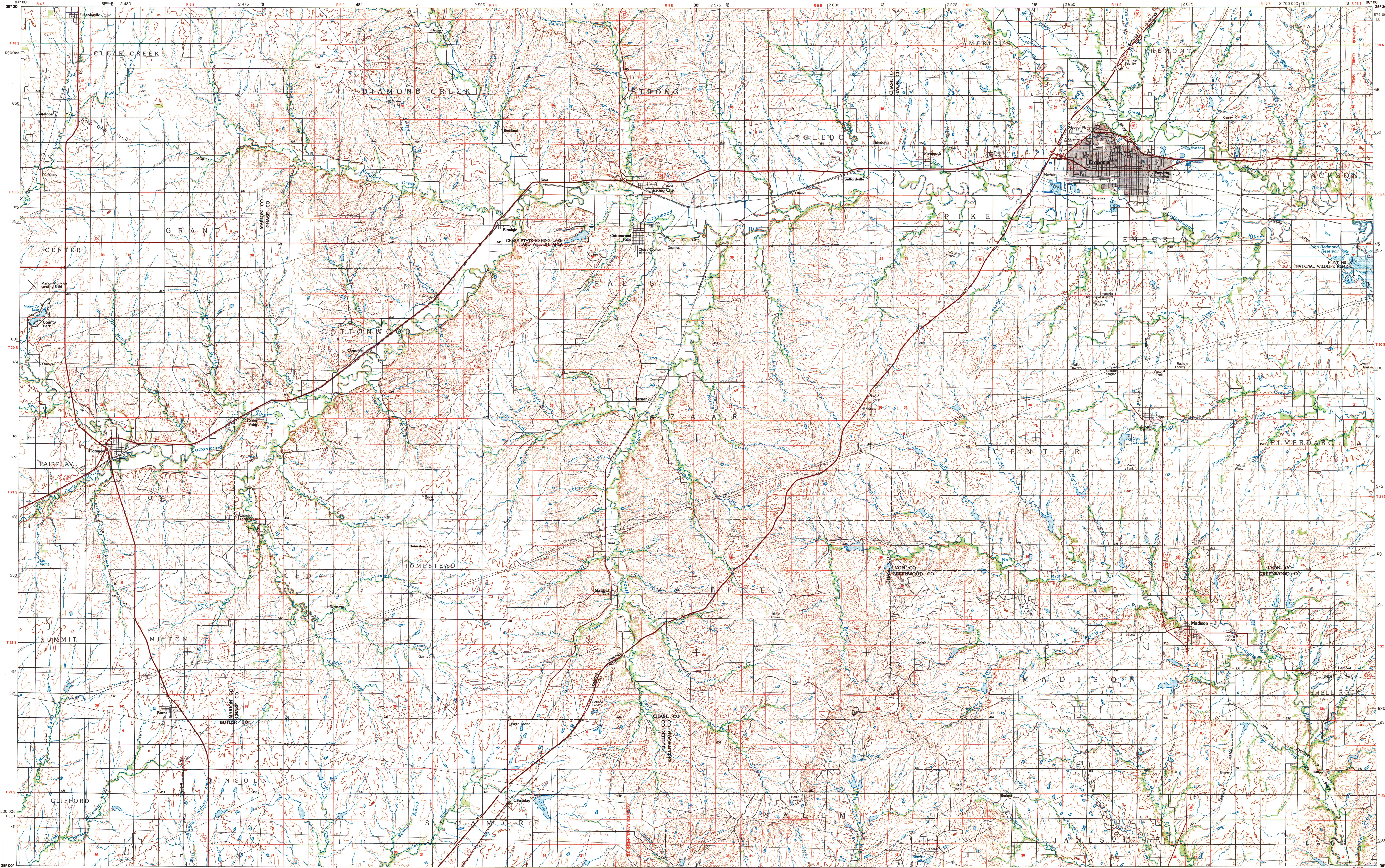


EMPORIA, KANSAS

30 X 60 MINUTE SERIES (TOPOGRAPHIC)



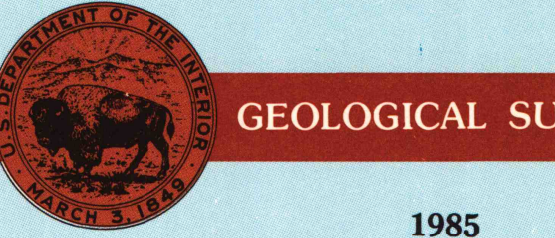
Emporia KANSAS

1:100 000-scale metric topographic map



30 X 60 MINUTE QUADRANGLE SHOWING

- Contours and elevations in meters
- Highways, roads and other manmade structures
- Water features
- Woodland areas
- Geographic names



1985 PHOTOINSPECTED 1985

Produced by the United States Geological Survey  
 Compiled from USGS 1:250,000-scale topographic maps dated 1957-1979. Planimetry revised from aerial photographs taken 1981 and other source data. Revised information not field checked. Map edited 1985  
 Projection and 10 000-meter grid, zone 14, Universal Transverse Mercator  
 25 000-foot grid ticks based on Kansas coordinate system south zone  
 1927 North American Datum  
 To place on the predicted North American Datum 1983, move the projection lines 1 meter north and 25 meters east  
 These may be private buildings within the boundaries of the National or State reservations shown on this map  
 Map photoinspected using 1985 photographs  
 No major culture or drainage changes found

CONTOUR INTERVAL 10 METERS  
NATIONAL GEODETIC VERTICAL DATUM OF 1929  
ELEVATIONS SHOWN TO THE NEAREST METER

THIS MAP COMPLES WITH NATIONAL MAP ACCURACY STANDARDS

Meters	Feet
1	3.2808
2	6.5617
3	9.8425
4	13.1234
5	16.4042
6	19.6850
7	22.9659
8	26.2467
9	29.5275
10	32.8084

To convert meters to feet multiply by 3.2808  
 To convert feet to meters multiply by 0.3048

FOR SALE BY U.S. GEOLOGICAL SURVEY  
DENVER, COLORADO 80225, OR RESTON, VIRGINIA 22092

A.H. ROBINSON  
MAP LIBRARY  
JAN 21 1991  
University of Wisconsin

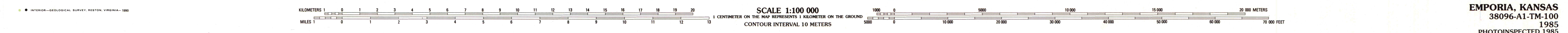
U.S. Regional  
Depository Copy  
DO NOT DISCARD

Topographic Map Symbols

Primary highway, hard surface	
Secondary highway, hard surface	
Light duty road, principal street, hard or improved surface	
Other road or street, dirt	
Route marker: interstate; U.S. State	
Railroad: standard gage; narrow gage	
Bridge: overpass; underpass	
Tunnel: road; railroad	
Built up area; locality elevation	
Airport; landing field; landing strip	
National boundary	
State boundary	
County boundary	
National or State reservation boundary	
Land grant boundary	
U.S. public lands survey: range, township, section	
Range, township; section line: protracted	
Power transmission line; pipeline	
Dam; dam with lock	
Cemetery; building	
Windmill; water well; spring	
Mine shaft; adit or cave; mine, quarry; gravel pit	
Campground; picnic area; U.S. location monument	
Ruin; cliff dwelling	
Disturbed surface: 20% muck, low, sand	
Contours: index, intermediate, supplementary	
Bathymetric contours: index, intermediate	
Stream, lake: perennial, intermittent	
Rapids, large and small; falls, large and small	
Area to be submerged; marsh, swamp	
Land subject to controlled inundation; woodland	
Scrub; mangrove	
Orchard; vineyard	

A pamphlet describing topographic maps is available on request

38096-A1  
SET



EMPORIA, KANSAS  
38096-A1-TM-100  
1985  
PHOTOINSPECTED 1985