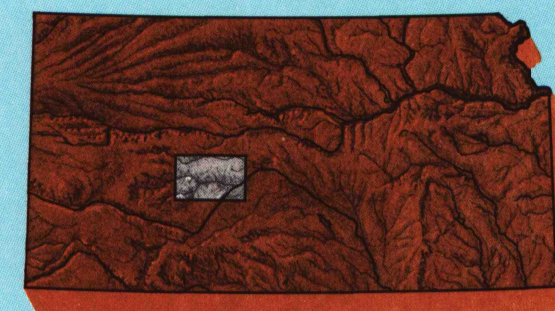


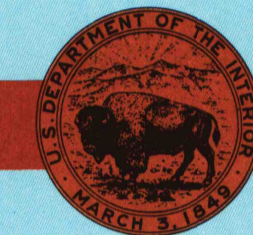
Larned KANSAS

1:100 000-scale metric
topographic map



30 X 60 MINUTE QUADRANGLE
SHOWING

- Contours and elevations in meters
- Highways, roads and other manmade structures
- Water features
- Woodland areas
- Geographic names



GEOLOGICAL SURVEY

1985
PHOTOINSPECTED 1985

Produced by the United States Geological Survey
 Compiled from USGS 1:24 000-scale topographic maps dated 1965-1972. Planimetry revised from aerial photographs taken 1981 and other source data. Revised information not field checked. Map revised 1985.
 Projection and 10 000-meter grid, zone 14, Universal Transverse Mercator
 25 000-foot grid ticks based on Kansas coordinate system, south zone
 1927 North American Datum
 To place on the predicted North American Datum 1983, move the projection lines 2 meters north and 33 meters east
 There may be private inholdings within the boundaries of the National or State reservations shown on this map

Map photoinspected using 1985 photographs
No major culture or drainage changes found

CONTOUR INTERVAL 10 METERS
NATIONAL GEODETIC VERTICAL DATUM OF 1929
ELEVATIONS SHOWN TO THE NEAREST METER

THIS MAP COMPLIES WITH NATIONAL MAP ACCURACY STANDARDS

CONVERSION TABLE		DECLINATION DIAGRAM		ADJOINING MAPS		
Meters	Feet	Magnetic Declination		1	2	3
1	3.2808	Magnetic Declination		4	5	6
2	6.5617	Magnetic Declination		7	8	9
3	9.8425	Magnetic Declination		10	11	12
4	13.1234	Magnetic Declination		13	14	15
5	16.4042	Magnetic Declination		16	17	18
6	19.6850	Magnetic Declination		19	20	21
7	22.9659	Magnetic Declination		22	23	24
8	26.2467	Magnetic Declination		25	26	27
9	29.5275	Magnetic Declination		28	29	30
10	32.8084	Magnetic Declination		31	32	33

To convert meters to feet multiply by 3.2808
 To convert feet to meters multiply by 0.3048

UTM grid convergency (GN and 1983 magnetic) at center of map
 Diagram is approximate

FOR SALE BY U.S. GEOLOGICAL SURVEY
DENVER, COLORADO 80225, OR RESTON, VIRGINIA 22092

U.S. Regional
Depository Copy
DO NOT DISCARD

Topographic Map Symbols

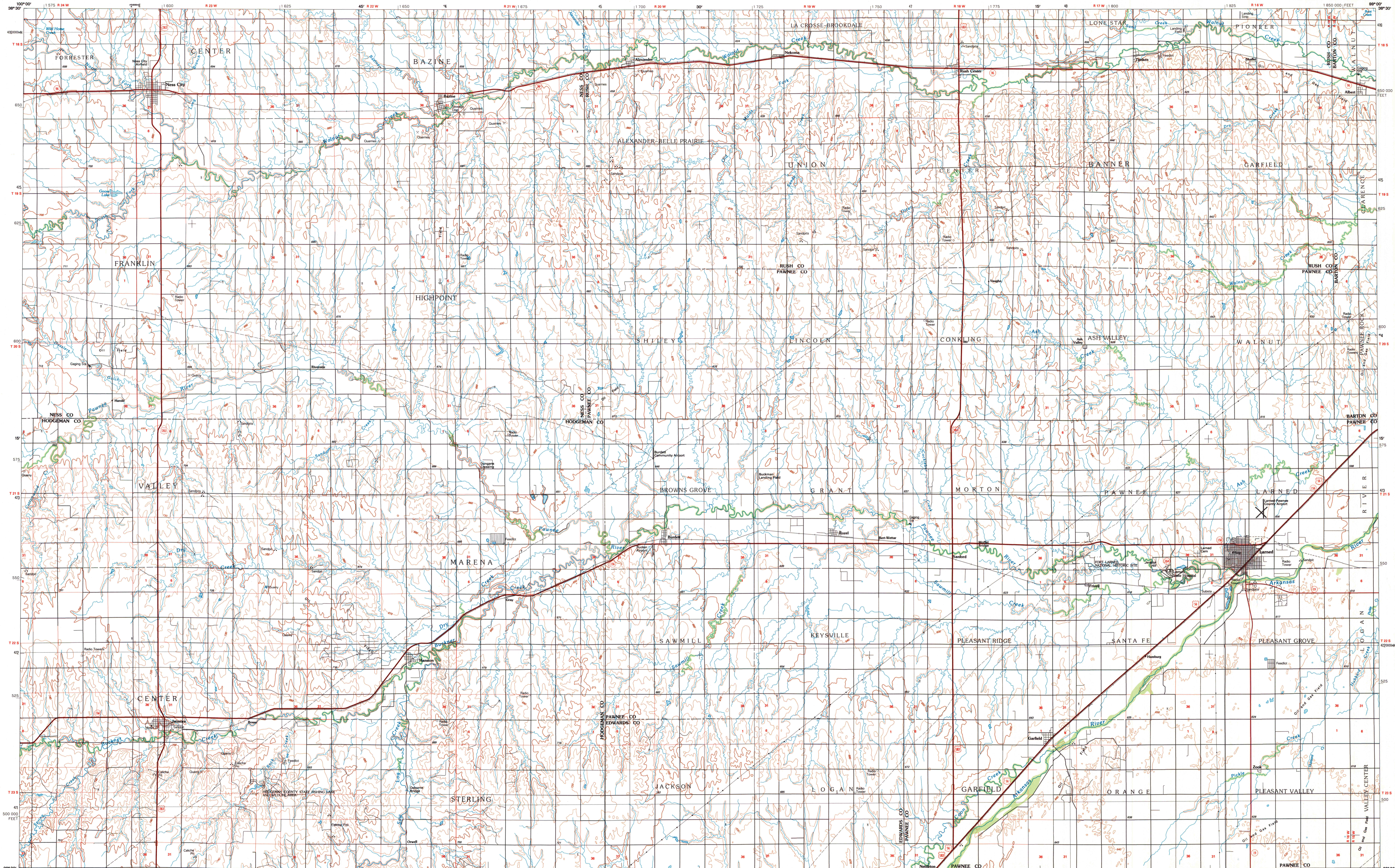
- Primary highway, hard surface
- Secondary highway, hard surface
- Light duty road, principal street, hard or improved surface
- Dirt road or gravel road
- Other road or track, trail
- Route marker: Interstate U.S.; State
- Railroad: standard gage; narrow gage
- Bridge: overpass; underpass
- Tunnel: road; railroad
- Ball up area; locality; elevation
- Airport; landing field; landing strip
- National boundary
- State boundary
- County boundary
- National or State reservation boundary
- Land grant boundary
- U.S. public lands survey: range, township, section
- Range, township; section line: protracted
- Power transmission line: pipeline
- Rail: air; building; elevation
- Cemetery; building
- Windmill; water well; spring
- Mine shaft; salt or cave; mine, quarry; gravel pit
- Campground; picnic area; U.S. location monument
- Rail: air; building; elevation
- Disrupted surface: strip mine; lava; sand
- Contours: index; intermediate; supplementary
- Bathymetric contours: index; intermediate
- Stream: lake; perennial; intermittent
- Rapids; large and small falls; levee and small
- Area to be submerged; marsh; swamp
- Land subject to controlled inundation; woodland
- Scrub; mangrove
- Orchard; vineyard

A pamphlet describing topographic maps is available on request

B006-9/02
SET

LARNED, KANSAS

30 X 60 MINUTE SERIES (TOPOGRAPHIC)



SCALE 1:100 000
 1 CENTIMETER ON THE MAP REPRESENTS 1 KILOMETER ON THE GROUND
 CONTOUR INTERVAL 10 METERS

KILOMETERS 0 1 2 3 4 5 6 7 8 9 10 11 12 13 14 15 16 17 18 19 20
 METERS 0 1000 2000 3000 4000 5000 6000 7000 8000 9000 10000 11000 12000 13000 14000 15000 16000 17000 18000 19000 20000
 MILES 0 1 2 3 4 5 6 7 8 9 10 11 12 13 14 15 16 17 18 19 20

A.H. ROBINSON
MAP LIBRARY
JUL 19 1990
University of Wisconsin
Marathon

LARNED, KANSAS
38099-A1-TM-100
1985
PHOTOINSPECTED 1985