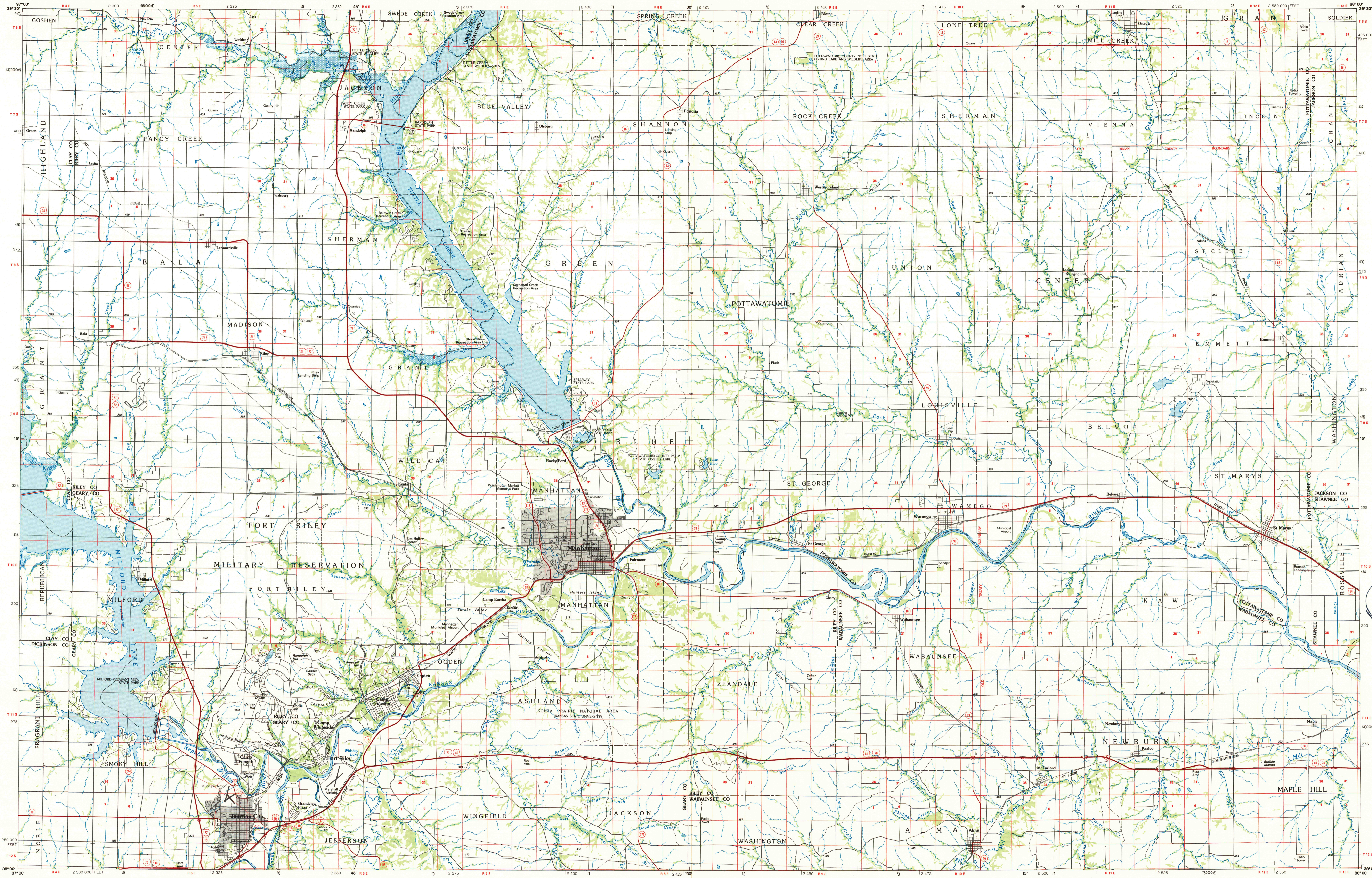


MANHATTAN, KANSAS

30 X 60 MINUTE SERIES (PLANIMETRIC)



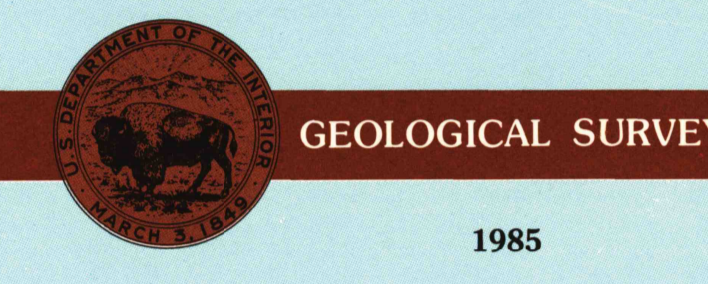
Manhattan KANSAS

1:100 000-scale planimetric map



30 X 60 MINUTE QUADRANGLE SHOWING

- Elevations in meters
- Highways, roads and other manmade structures
- Water features
- Woodland areas
- Geographic names



Produced by the United States Geological Survey
 Compiled from USGS 1:24 000-scale topographic maps dated 1953-1983. Planimetry revised from aerial photographs taken 1981 and other source data. Revised information not field checked. Map edited 1985.
 Projection and 10 000-meter grid, zone 14, Universal Transverse Mercator
 25 000-foot grid ticks based on Kansas coordinate system, north zone
 1927 North American Datum
 To place on the predicted North American Datum 1983, move the projection lines 2 meters north and 25 meters east
 There may be private inholdings within the boundaries of the National or State reservations shown on this map

NATIONAL GEODETIC VERTICAL DATUM OF 1929 ELEVATIONS SHOWN TO THE NEAREST METER

THIS MAP COMPLIES WITH NATIONAL MAP ACCURACY STANDARDS

CONVERSION TABLE		DECLINATION DIAGRAM		ADJOINING MAPS		
Meters	Feet	1983	1985	1	2	3
1	3.2808	13° 45'	13° 47'	1	2	3
2	6.5617	13° 45'	13° 47'	4	5	
3	9.8425	13° 45'	13° 47'	6	7	8
4	13.1234	13° 45'	13° 47'			
5	16.4042	13° 45'	13° 47'			
6	19.6850	13° 45'	13° 47'			
7	22.9659	13° 45'	13° 47'			
8	26.2467	13° 45'	13° 47'			
9	29.5275	13° 45'	13° 47'			
10	32.8084	13° 45'	13° 47'			

To convert meters to feet multiply by 3.2808
 To convert feet to meters multiply by 0.3048

UTM grid convergence (IGN and 1983 magnetic declination) at center of map Degree is approximate

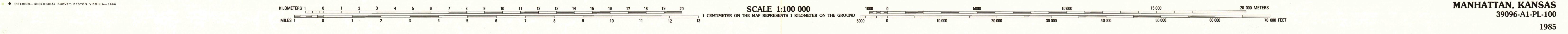
FOR SALE BY U.S. GEOLOGICAL SURVEY
 Denver, COLORADO 80225, OR RESTON, VIRGINIA 22092

USGS 1:100 000 HISTORICAL MAP
 JUN 02 1986
 REC'D FILE COPY

Topographic Map Symbols

- Primary highway, hard surface
- Secondary highway, hard surface
- Light duty road, principal street, hard or improved surface
- Other road or street, trail
- Route marker: Interstate, U.S.; State
- Railroad: standard gage; narrow gage
- Bridge; overpass; underpass
- Tunnel; road; railroad
- Built up area, locality; elevation
- Airport; landing field; landing strip
- National boundary
- State boundary
- County boundary
- National or State reservation boundary
- Land grant boundary
- U.S. public lands survey: range, township; section
- Range, township; section line: protracted
- Power transmission line, pipeline
- Dam, dam with lock
- Cemetery, building
- Woodlot; water well; spring
- Mine shaft; adit or cave; mine, quarry; gravel pit
- Canal; irrigation; picnic area; U.S. location monument
- Ruins; cliff dwelling
- Distorted surface: strip mine; lava; sand
- Contours: index; intermediate; supplementary
- Bathymetric contours: index; intermediate
- Stream, lake; perennial; intermittent
- Rapids, large and small; falls, large and small
- Area to be submerged; marsh, swamp
- Land subject to controlled inundation; woodland
- Scrub; mangrove
- Orchard; vineyard

A pamphlet describing topographic maps is available on request



MANHATTAN, KANSAS
 39096-A1-PL-100
 1985