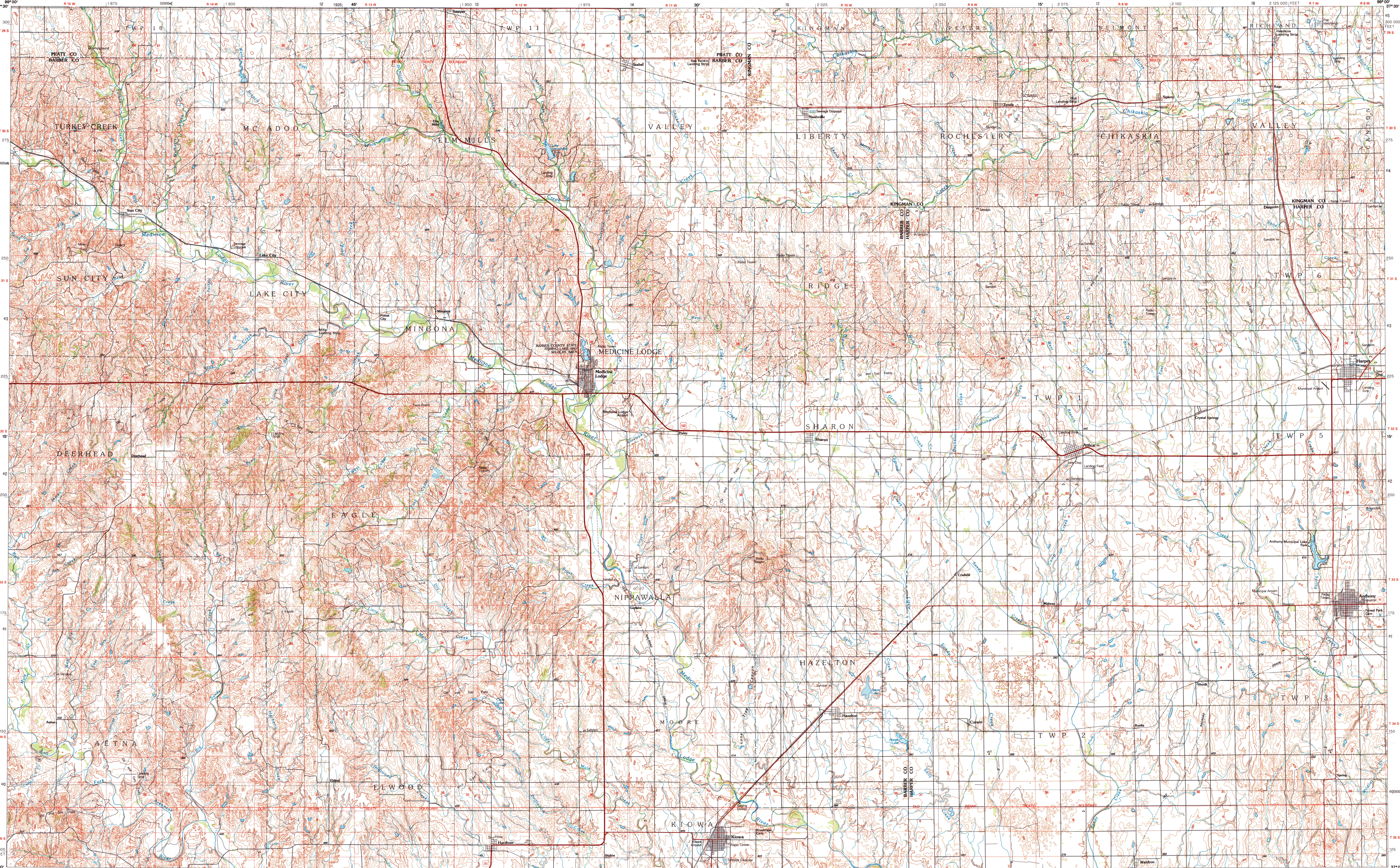


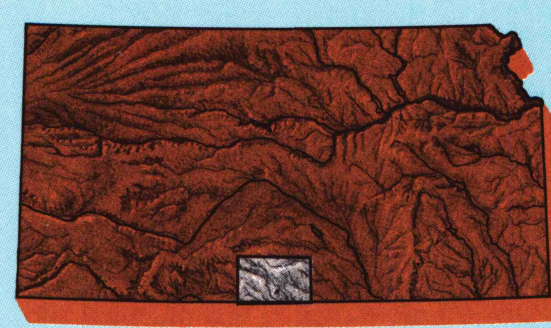
MEDICINE LODGE, KANSAS

30 X 60 MINUTE SERIES (TOPOGRAPHIC)



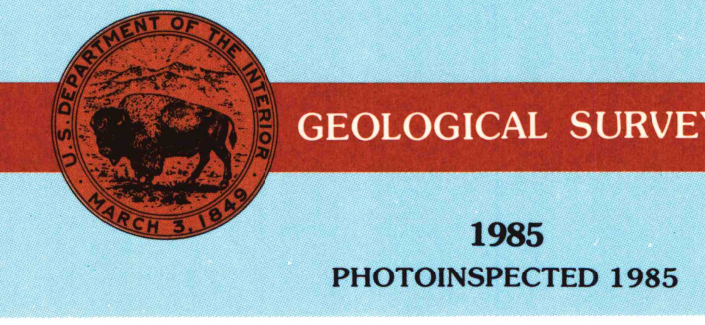
Medicine Lodge KANSAS

1:100 000-scale metric topographic map



30 X 60 MINUTE QUADRANGLE SHOWING

- Contours and elevations in meters
- Highways, roads and other manmade structures
- Water features
- Woodland areas
- Geographic names



Produced by the United States Geological Survey
 Compiled from USGS 1:24 000-scale topographic maps dated 1968-1983. Planimetry revised from aerial photographs taken 1981 and other source data. Revised information not field checked. Map edited 1985.
 Projection and 10 000-meter grid zone 14, Universal Transverse Mercator
 25 000-foot grid ticks based on Kansas coordinate system, south zone
 1927 North American Datum
 To place on the predicted North American Datum 1983, move the projection lines 31 meters east
 There may be private inholdings within the boundaries of the National or State reservations shown on this map
 Map photoinspected using 1985 photographs
 No major culture or drainage changes found
 CONTOUR INTERVAL 5 METERS
 NATIONAL GEODETIC VERTICAL DATUM OF 1929
 ELEVATIONS SHOWN TO THE NEAREST METER

THIS MAP COMPLIES WITH NATIONAL MAP ACCURACY STANDARDS

CONVERSION TABLE		DECLINATION DIAGRAM		ADJOINING MAPS		
Meters	Feet	1	2	1	2	3
1	3.2808			1	2	3
2	6.5617			4	5	
3	9.8425			6	7	8
4	13.1234					
5	16.4042					
6	19.6850					
7	22.9659					
8	26.2467					
9	29.5275					
10	32.8084					

To convert meters to feet multiply by 3.2808
 To convert feet to meters multiply by 0.3048

UTM grid convergence 150 meters (at center of map)
 declination (MAG) Diagram is approximate

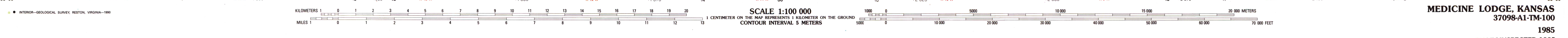
1 Kinsey
 2 Pratt
 3 Wichita
 4 Protection
 5 Wellington
 6 Buffalo
 7 Alva
 8 Ponca City

FOR SALE BY U.S. GEOLOGICAL SURVEY DENVER, COLORADO 80225, OR RESTON, VIRGINIA 22092

A.H. ROBINSON MAP LIBRARY
 JUL 19 1990
 U.S. Regional Depository Copy
 DO NOT DISCARD
 University of Wisconsin
 Madison

Topographic Map Symbols

- Primary highway, hard surface
- Secondary highway, hard surface
- Light duty road, principal street, hard or improved surface
- Other road or street; trail
- Route marker: interstate, U.S., State
- Route marker: narrow gauge
- Railroad: standard gauge; narrow gauge
- Bridge: overpass; underpass
- Tunnel: road, railroad
- Built up area; locality; elevation
- Airport; landing field; landing strip
- National boundary
- State boundary
- County boundary
- National or State reservation boundary
- Land grant boundary
- U.S. public lands survey: range, township, section
- Range, township, section line, protracted
- Power transmission line; pipeline
- Dam; dam with lock
- Cemetery; building
- Well; water well; spring
- Mine shaft; adit or cave; mine, quarry; gravel pit
- Campground; picnic area; U.S. location monument
- Runoff: gull, swale, rill
- Disturbed surface: strip mine, levee, sand
- Contours: index, intermediate; supplementary
- Bathymetric contours: index, intermediate
- Stream, lake: perennial, intermittent
- Rapids; large and small; falls, large and small
- Area to be submerged: marsh, swamp
- Land subject to controlled inundation; woodland
- Scrub; mangrove
- Orchard; vineyard



MEDICINE LODGE, KANSAS
 37098-A1-TM-100
 1985
 PHOTOINSPECTED 1985

A pamphlet describing topographic maps is available on request
 3006-9/8
 SET