

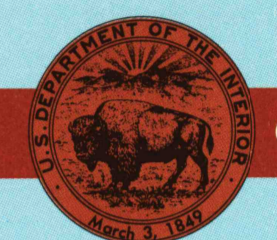
Salina KANSAS

1:100 000-scale metric
topographic map



30 X 60 MINUTE QUADRANGLE
SHOWING

- Contours and elevations in meters
- Highways, roads and other manmade structures
- Water features
- Woodland areas
- Geographic names



GEOLOGICAL SURVEY

1990

Produced by the United States Geological Survey

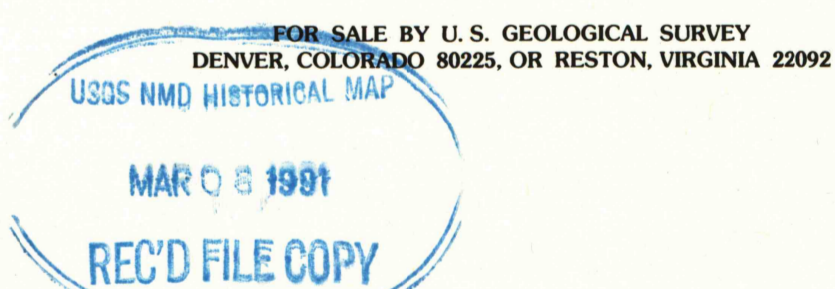
Compiled from USGS 1:24 000 and 1:62 500-scale topographic maps dated 1955-1979. Planimetry revised from aerial photographs taken 1965 and other source data. Revised information not field checked. Map edited 1990.

Projection and 10 000-meter grid, zone 14, Universal Transverse Mercator
25 000-foot grid ticks based on Kansas coordinate system, north and south zones
1927 North American Datum
To place on the predicted North American datum 1983, move the projection lines 2 meters north and 27 meters east.
There may be private inholdings within the boundaries of the National or State reservations shown on this map.

CONTOUR INTERVAL 10 METERS
NATIONAL GEODETIC VERTICAL DATUM OF 1929
ELEVATIONS SHOWN TO THE NEAREST METER

THIS MAP COMPLIES WITH NATIONAL MAP ACCURACY STANDARDS

CONVERSION TABLE		DECLINATION DIAGRAM	ADJOINING MAPS		
Meters	Feet		1	2	3
1	3.2808		1	2	3
2	6.5617		4	5	6
3	9.8425		7	8	9
4	13.1234		10	11	12
5	16.4042		13	14	15
6	19.6850		16	17	18
7	22.9658		19	20	21
8	26.2467		22	23	24
9	29.5275		25	26	27
10	32.8084		28	29	30
To convert meters to feet multiply by 3.2808		UTM grid convergence (GN) and 1960 magnetic declination (MD) at center of map Diagram is approximate			
To convert feet to meters multiply by 0.3048					



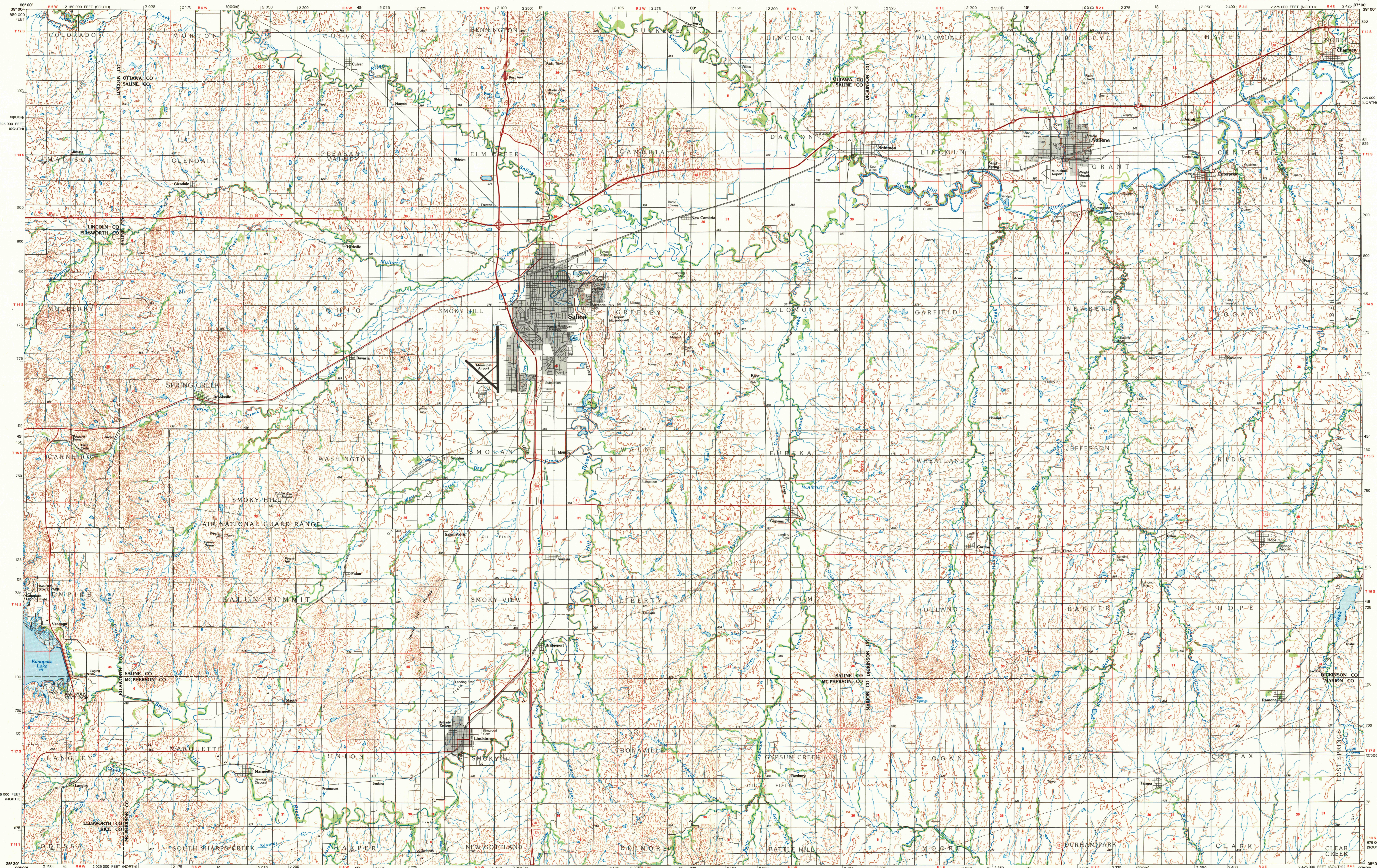
Topographic Map Symbols

Primary highway, hard surface	
Secondary highway, hard surface	
Light duty road, principal street, hard or improved surface	
Other road or street, trail	
Route marker: Interstate, U.S., State	
Railroad: standard gage, narrow gage	
Bridge: overpass, underpass	
Tunnel: road, railroad	
Built up area, locality, elevation	
Airport: landing field, landing strip	
National boundary	
State boundary	
County boundary	
National or State reservation boundary	
Land grant boundary	
U.S. public lands survey: range, township, section	
Range, township, section line: constructed	
Power transmission line: pipeline	
Dam, dam with lock	
Cemetery: building	
Windmill; water well; spring	
Mine shaft; pit or cave; mine; quarry; gravel pit	
Campground; picnic area; U.S. location monument	
Ruins: cliff dwellings	
Distorted surface: strip mine, lava, sand	
Contours: index, intermediate, supplementary	
Bathymetric contours: index, intermediate	
Stream, lake, perennial; intermittent	
Rapids, large and small; falls, large and small	
Area to be submerged; marsh, swamp	
Land subject to controlled inundation; woodland	
Scrub; mangrove	
Drainage; vineyard	

A pamphlet describing topographic maps is available on request

SALINA, KANSAS

30 X 60 MINUTE SERIES (TOPOGRAPHIC)



INTERIOR-GEOLOGICAL SURVEY, RESTON, VIRGINIA-1990

KILOMETERS 1 0 1 2 3 4 5 6 7 8 9 10 11 12 13 14 15 16 17 18 19 20

SCALE 1:100 000

1 CENTIMETER ON THE MAP REPRESENTS 1 KILOMETER ON THE GROUND

CONTOUR INTERVAL 10 METERS

1000 0 5000 10000 20000 30000 40000 50000 60000 70000 METERS

SALINA, KANSAS
38097-E1-TM-100

1990