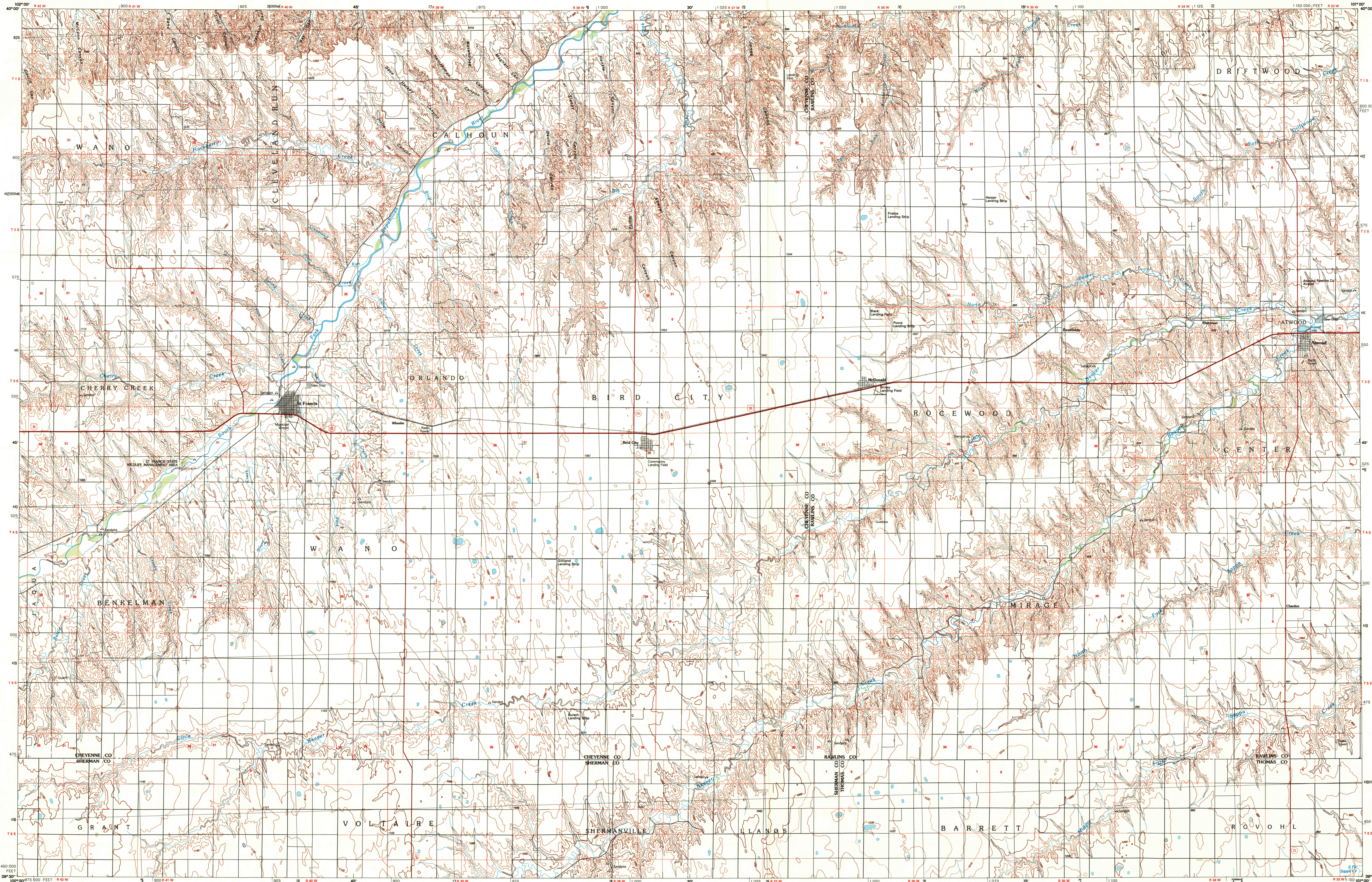
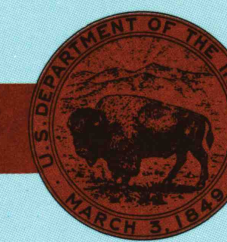


## ST. FRANCIS, KANSAS

30 X 60 MINUTE SERIES (TOPOGRAPHIC)

St. Francis  
KANSAS1:100 000-scale metric  
topographic map30 X 60 MINUTE QUADRANGLE  
SHOWING

- Contours and elevations in meters
- Highways, roads and other manmade structures
- Water features
- Woodland areas
- Geographic names



GEOLOGICAL SURVEY

1985

PHOTOINSPECTED 1985

Produced by the United States Geological Survey

Compiled from USGS 1:24 000-scale topographic maps dated 1976-1981. Planimetry revised from aerial photographs taken 1980 and other source data. Revised information not field checked. Map edited 1985.

Projection and 10 000-meter grid, zone 14, Universal Transverse Mercator. 25 000-foot grid ticks based on Kansas coordinate system, north zone.

1927 North American Datum.

To place on the predicted North American Datum 1983, move the projection lines 4 meters north and 38 meters east. There may be private inholdings within the boundaries of the National or State reservations shown on this map.

Map photoinspected using 1985 photographs. No major culture or drainage changes found. CONTOUR INTERVAL 10 METERS. SUPPLEMENTARY CONTOUR INTERVAL 5 METERS. NATIONAL GEODETIC VERTICAL DATUM OF 1929. ELEVATIONS SHOWN TO THE NEAREST METER.

THIS MAP COMPLIES WITH NATIONAL MAP ACCURACY STANDARDS

CONVERSION TABLE		DECLINATION DIAGRAM		ADJOINING MAPS		
Meters	Feet			1	2	3
1	3.2808			4	5	6
2	6.5617	UTM grid convergence (GM) and 1985 magnetic declination (MD) at center of map. Declination is approximate.		7	8	
3	9.8425					
4	13.1234					
5	16.4043					
6	19.6852					
7	22.9660					
8	26.2469					
9	29.5278					
To convert meters to feet multiply by 3.2808						
To convert feet to meters multiply by 0.3048						

FOR SALE BY U.S. GEOLOGICAL SURVEY  
DENVER, COLORADO 80225, OR RESTON, VIRGINIA 22092

USGS NHD HISTORICAL MAP

JUN 29 1989

REC'D FILE COPY

## Topographic Map Symbols

Primary highway, hard surface	
Secondary highway, hard surface	
Light duty road, principal street, hard or improved surface	
Other road or street, trail	
Road, meter: Interstate, U.S., State	
Railroad: standard gage, narrow gage	
Bridge: overpass, underpass	
Tunnel: road, railroad	
Built up area, locality, elevation	
Airport, landing field, landing strip	
National boundary	
State boundary	
County boundary	
National or State reservation boundary	
Land grant boundary	
U.S. public lands survey: range, township, section	
Range, township, section line; protected	
Power transmission line; pipeline	
Dam; dam with lock	
Cemetery, building	
Woods: water well, spring	
Mine shaft; adit or cave; mine, quarry; gravel pit	
Campground; picnic area; U.S. location monument	
Ruin; cliff dwelling	
Distorted surface: strip mine, lava, sand	
Contours: index, intermediate, supplementary	
Bathymetric contours: index, intermediate	
Stream, lake, perennial; intermittent	
Rapids, large and small; falls, large and small	
Area to be submerged; marsh, swamp	
Land subject to controlled inundation; woodland	
Scrub, mangrove	
Orchard; vineyard	

A pamphlet describing topographic maps is available on request

SCALE 1:100 000  
1 CENTIMETER ON THE MAP REPRESENTS 1 KILOMETER ON THE GROUND  
CONTOUR INTERVAL 10 METERS  
SUPPLEMENTARY CONTOUR INTERVAL 5 METERS

ST. FRANCIS, KANSAS

39101-E1-TM-100

1985

PHOTOINSPECTED 1985