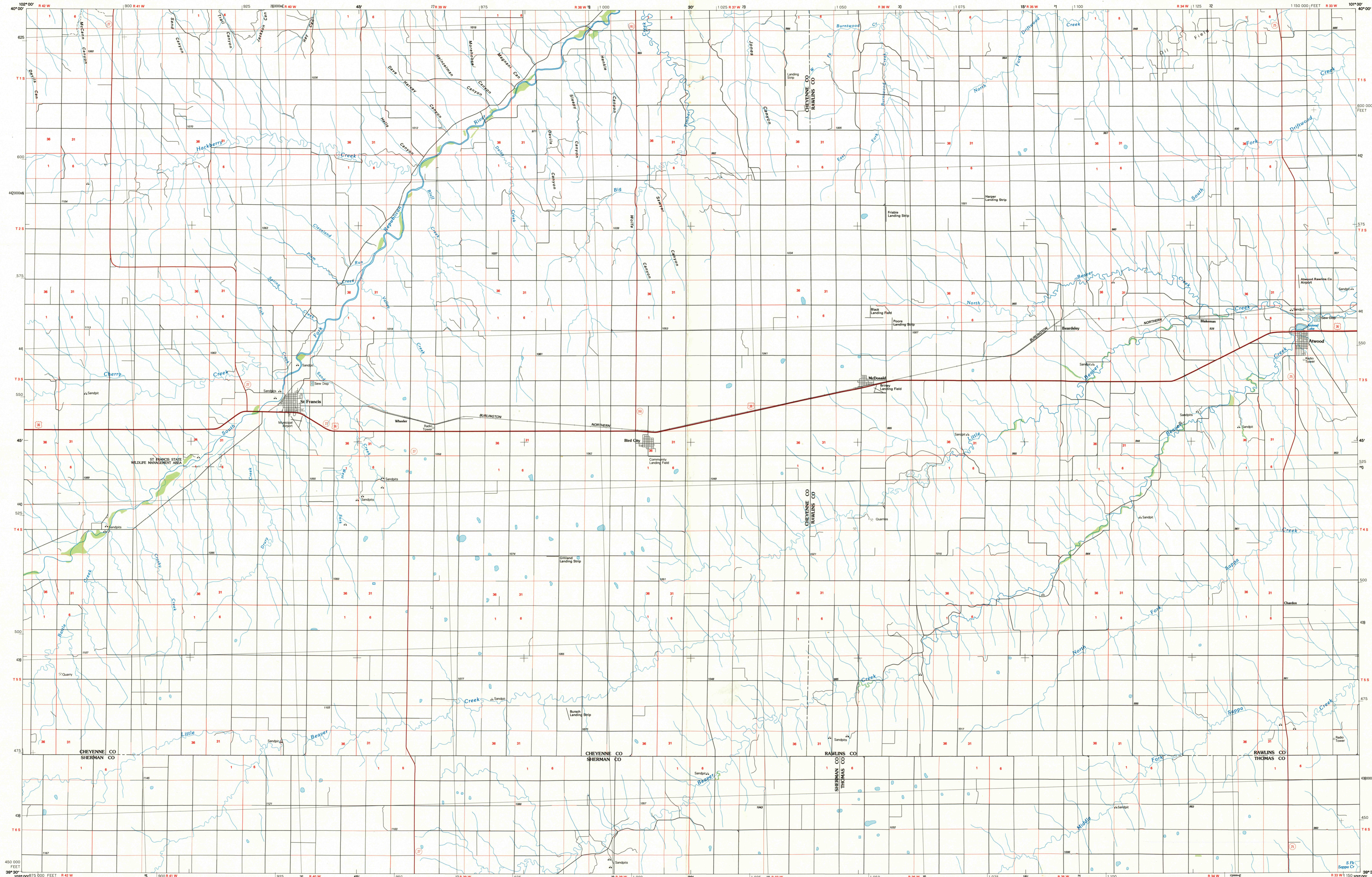
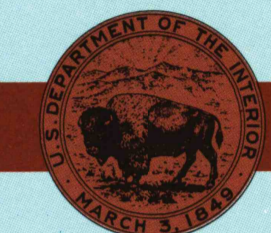


ST. FRANCIS, KANSAS

30 X 60 MINUTE SERIES (PLANIMETRIC)

St. Francis
KANSAS1:100 000-scale
planimetric map30 X 60 MINUTE QUADRANGLE
SHOWING

- Elevations in meters
- Highways, roads and other manmade structures
- Water features
- Woodland areas
- Geographic names



GEOLOGICAL SURVEY

1985

Produced by the United States Geological Survey

Compiled from USGS 1:24 000-scale topographic maps dated 1976-1981. Planimetry revised from aerial photographs taken 1980 and other source data. Revised information not field checked. Map edited 1985

Projection and 10 000-meter grid, zone 14, Universal Transverse Mercator
25 000-foot grid ticks based on Kansas coordinate system, north zone
1927 North American Datum
To place on the predicted North American Datum 1983, move the projection lines 4 meters north and 38 meters east
There may be private inholdings within the boundaries of the National or State reservations shown on this map

NATIONAL GEODETIC VERTICAL DATUM OF 1929
ELEVATIONS SHOWN TO THE NEAREST METER

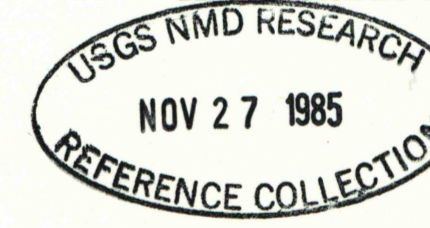
THIS MAP COMPLIES WITH NATIONAL MAP ACCURACY STANDARDS

| CONVERSION TABLE | | DECLINATION DIAGRAM | ADJOINING MAPS | | |
|------------------|---------|---------------------|----------------|---|---|
| Meters | Feet | | 1 | 2 | 3 |
| 1 | 3.2808 | | 4 | 5 | |
| 2 | 6.5617 | | 6 | 7 | 8 |
| 3 | 9.8425 | | | | |
| 4 | 13.1234 | | | | |
| 5 | 16.4042 | | | | |
| 6 | 19.6850 | | | | |
| 7 | 22.9658 | | | | |
| 8 | 26.2467 | | | | |
| 9 | 29.5275 | | | | |
| 10 | 32.8084 | | | | |

To convert meters to feet multiply by 3.2808
To convert feet to meters multiply by 0.3048

UTM grid convergence (GN and 1983 magnetic declination (MM) at center of map)
Diagram is approximate

1 Wray
2 Rankin
3 Mc Cook
4 Honey Reservoir
5 Overlin
6 Burlington
7 Goodland
8 Oakley

FOR SALE BY U.S. GEOLOGICAL SURVEY
DENVER, COLORADO 80225, OR RESTON, VIRGINIA 22092

Topographic Map Symbols

| | |
|--|--|
| Primary highway, hard surface..... | |
| Secondary highway, hard surface..... | |
| Light duty road, principal street, hard or improved surface..... | |
| Other road or street, trail..... | |
| Route marker, Interstate: U.S. State..... | |
| Railroad: standard gage, narrow gage..... | |
| Bridge: overpass, underpass..... | |
| Tunnel: road, railroad..... | |
| Built up area, locality, elevation..... | |
| Airport, landing field, landing strip..... | |
| National boundary..... | |
| State boundary..... | |
| County boundary..... | |
| National or State reservation boundary..... | |
| Land grant boundary..... | |
| U.S. public lands survey: range, township, section..... | |
| Range, township, section line: protected..... | |
| Power transmission line: pipeline..... | |
| Dam; dam with lock..... | |
| Cemetery, building..... | |
| Windmill, water well, spring..... | |
| Mine shaft, adit or cave; mine, quarry; gravel pit..... | |
| Campground; picnic area; U.S. location monument..... | |
| Ruin; cliff dwelling..... | |
| Disturbed surface: strip mine, lava, sand..... | |
| Contours: index, intermediate, supplementary..... | |
| Bathymetric contours: index, intermediate..... | |
| Stream, lake, perennial, intermittent..... | |
| Rapids, large and small; falls, large and small..... | |
| Area to be submerged; marsh, swamp..... | |
| Land subject to controlled inundation; woodland..... | |
| Scrub, mangrove..... | |
| Orchard; vineyard..... | |

A pamphlet describing topographic maps is available on request

ST. FRANCIS, KANSAS
39101-E1-PL-100

1985