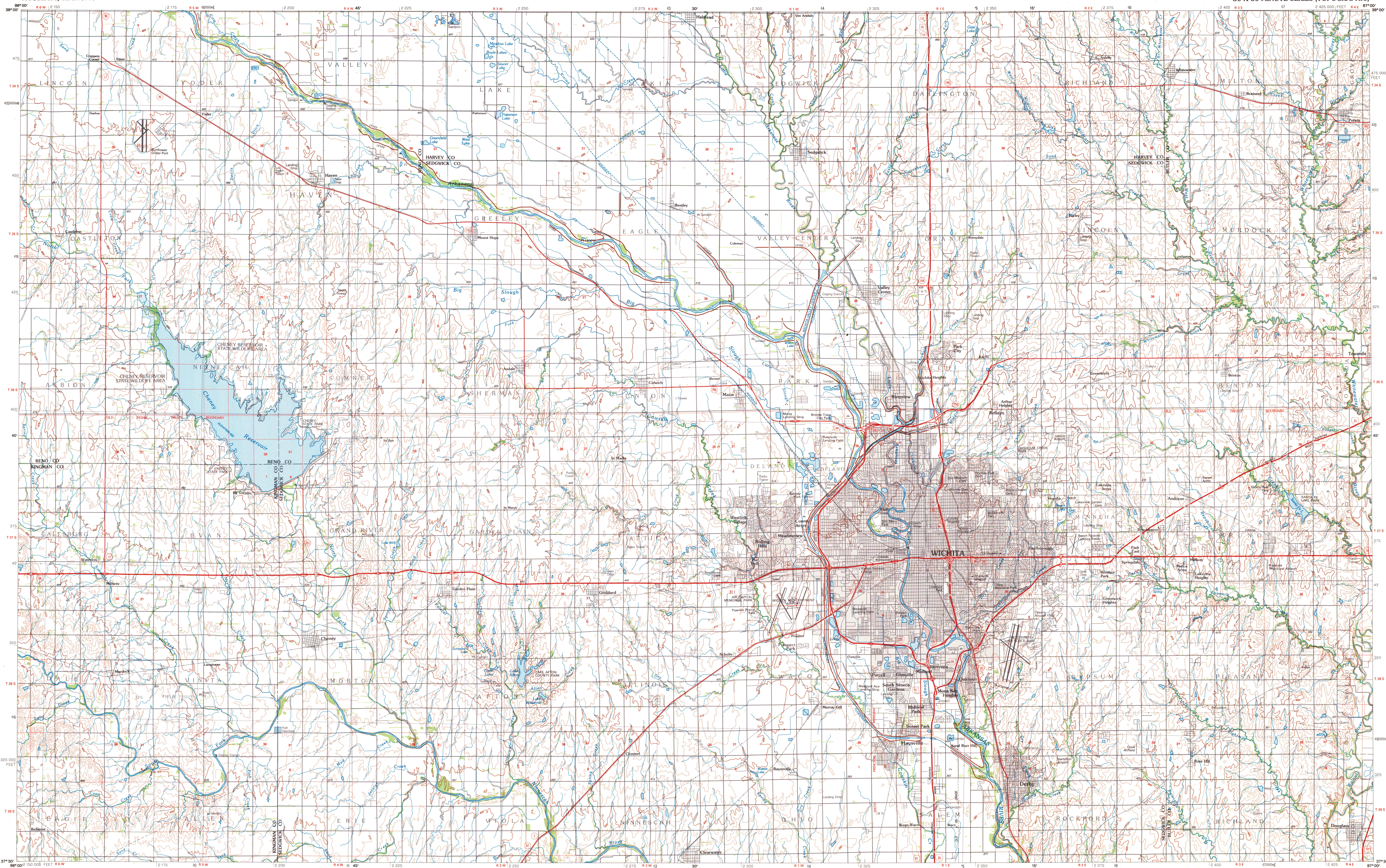
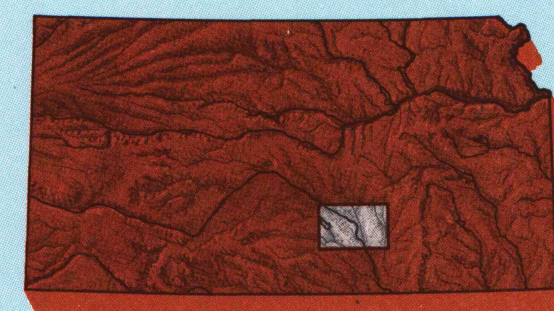
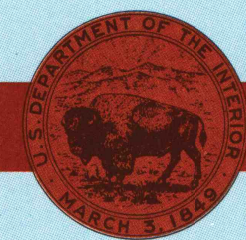


WICHITA, KANSAS

30 X 60 MINUTE SERIES (TOPOGRAPHIC)

Wichita
KANSAS1:100 000-scale metric
topographic map30 X 60 MINUTE QUADRANGLE
SHOWING

- Contours and elevations in meters
- Highways, roads and other manmade structures
- Water features
- Woodland areas
- Geographic names



GEOLOGICAL SURVEY

1990

Produced by the United States Geological Survey

Compiled from USGS 1:24 000-scale topographic maps dated 1955-1982. Planimetry revised from aerial photographs taken 1985 and other source data. Revised information not field checked. Map edited 1990.

Projection and 10 000-meter grid, zone 14, Universal Transverse Mercator
25 000-foot grid ticks based on Kansas coordinate system, south zone
1927 North American Datum
To place on the predicted North American Datum 1983, move the projection lines 28 meters east

There may be private inholdings within the boundaries of the National or State reservations shown on this map

CONTOUR INTERVAL 5 METERS

NATIONAL GEODETIC VERTICAL DATUM OF 1929
ELEVATIONS SHOWN TO THE NEAREST METER

THIS MAP COMPLIES WITH NATIONAL MAP ACCURACY STANDARDS

CONVERSION TABLE		DECLINATION DIAGRAM		ADJOINING MAPS		
Meters	Feet	Meters		1	2	3
1	3.2808	0° 55'		4	5	
2	6.5617	0° 50'		6	7	8
3	9.8425	0° 45'				
4	13.1234	0° 40'				
5	16.4042	0° 35'				
6	19.6850	0° 30'				
7	22.9659	0° 25'				
8	26.2467	0° 20'				
9	29.5275	0° 15'				
10	32.8084	0° 10'				
To convert meters to feet multiply by 3.2808		UTM grid convergence (GN) and 1000 magnetic at center of map (diagram is approximate)		1 Great Bend		
To convert feet to meters multiply by 0.3048				2 Hutchinson		
				3 Emporia		
				4 Pratt		
				5 El Dorado		
				6 Medicine Lodge		
				7 Wellington		
				8 Sedan		

FOR SALE BY U.S. GEOLOGICAL SURVEY
DENVER, COLORADO 80225, OR RESTON, VIRGINIA 22092

ARTHUR H. ROBINSON MAP LIBRARY
University of Wisconsin-Madison
R-4-4-91

U.S. Regional
Depository Copy
DO NOT DISCARD

Topographic Map Symbols

Primary highway, hard surface	Secondary highway, hard surface	Light duty road, principal street, hard or improved surface	Other road or street, trail	Route marker, Interstate, U.S. State	Bridge, overpass, underpass	Tunnel, road, railroad	Built-up area, locality, elevation	Airport, landing field, landing strip	National boundary	State boundary	County boundary	National or State reservation boundary	Land grant boundary	U.S. public lands survey: range, township, section	Range, township, section line: protracted	Power transmission line: pipeline	Clear area with foot...	Cemetery, building	Windmill, water well, spring	Mine shaft, adit or cave, mine, quarry, gravel pit	Campground, picnic area, U.S. location monument	Ruin, old dwelling	Disturbed surface: strip mine, lava, sand	Contours: index, intermediate, supplementary	Bathymetric contours: index, intermediate	Stream, lake, perennial, intermittent	Rapids, large and small; falls, large and small	Area to be submerged: marsh, swamp	Land subject to controlled inundation: woodland	Scrub, mangrove	Orchard, vineyard
-------------------------------	---------------------------------	---	-----------------------------	--------------------------------------	-----------------------------	------------------------	------------------------------------	---------------------------------------	-------------------	----------------	-----------------	--	---------------------	--	---	-----------------------------------	-------------------------	--------------------	------------------------------	--	---	--------------------	---	--	---	---------------------------------------	---	------------------------------------	---	-----------------	-------------------

A pamphlet describing topographic maps is available on request

WICHITA, KANSAS

37097-E1-TM-100

1990

B006-98.02
SET