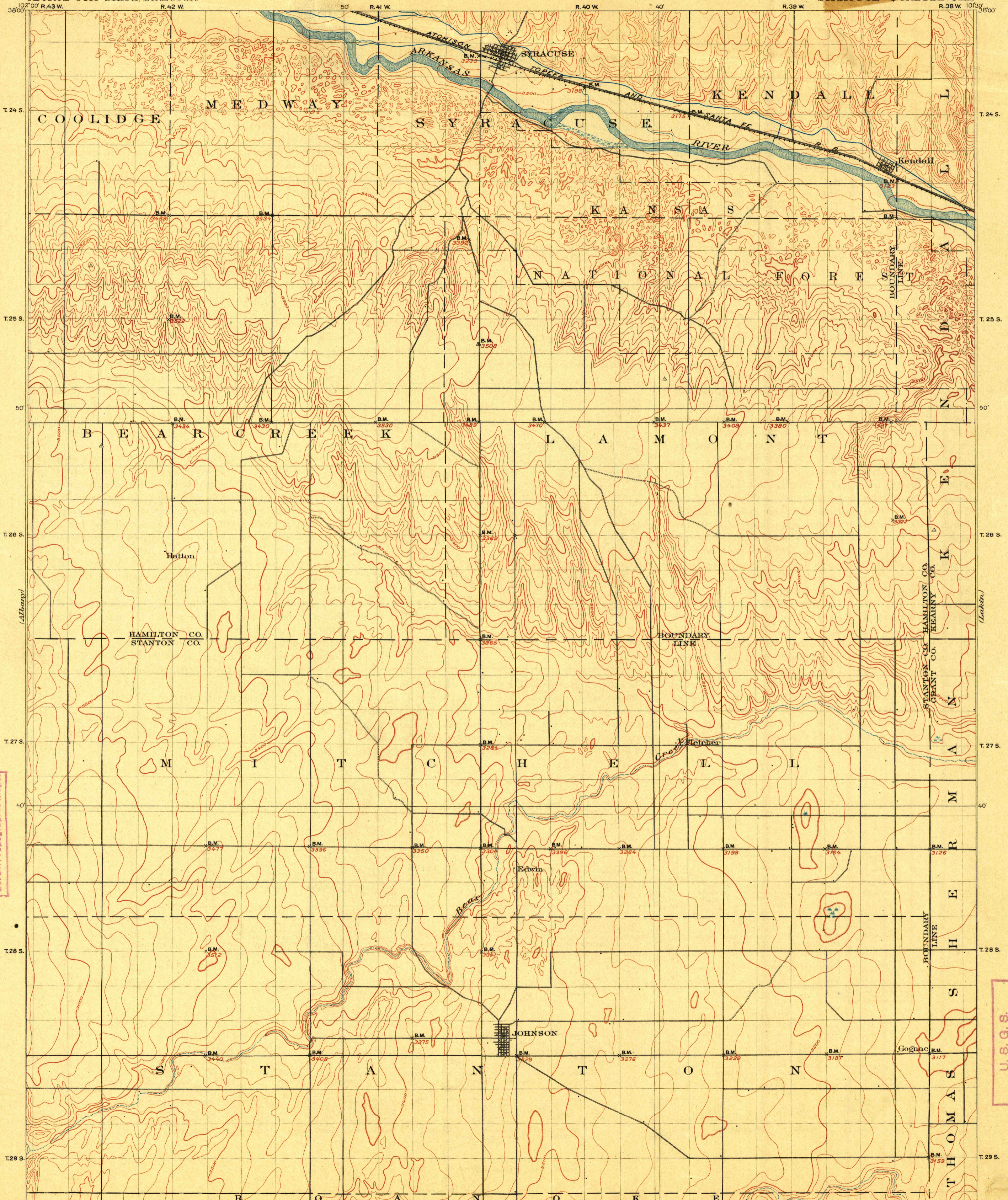


TOPOGRAPHY

KANSAS
SYRACUSE QUADRANGLE

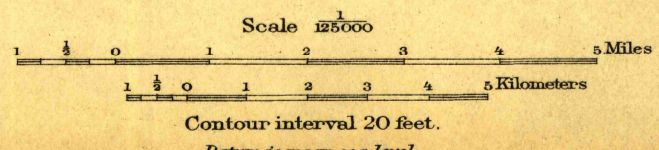
U.S. GEOLOGICAL SURVEY
GEORGE OTIS SMITH, DIRECTOR



FILE COPY
Ed. Div. Topographic Maps.

U.S.G.S.

Jno. H. Renshawe Geographer in charge.
Triangulation by A.H. Thompson.
Topography by Nat. Tyler, Jr.
Surveyed in 1898.



USGS
Historical File
Topographic Division

Edition of June 1900, reprinted Oct. 1913.

OCT 8 1 1913 2602

SYRACUSE KANS.