

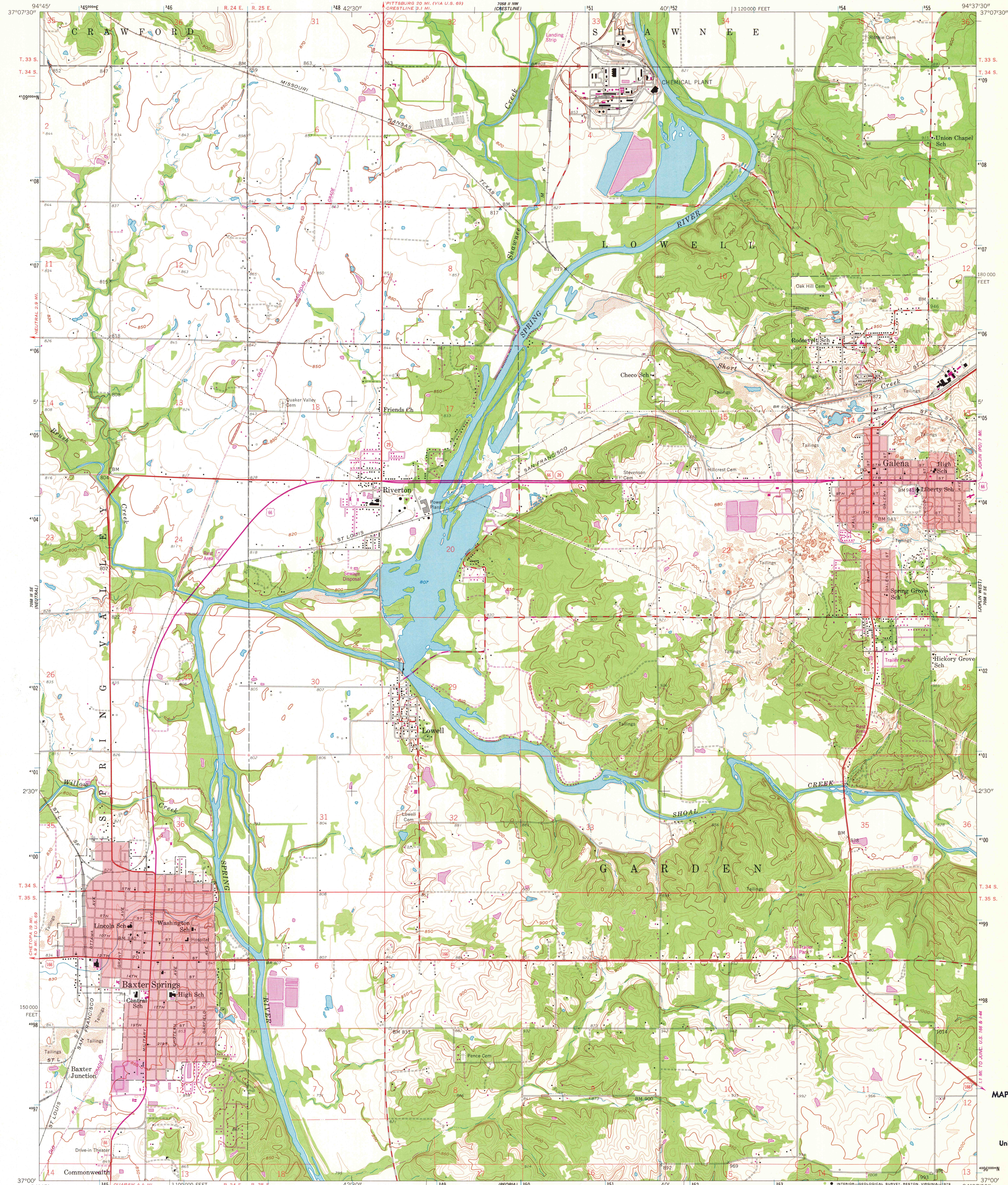
7508 II SW  
(COLUMBIAS)

UNITED STATES  
DEPARTMENT OF THE INTERIOR  
GEOLOGICAL SURVEY

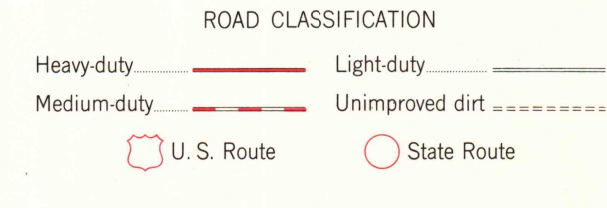
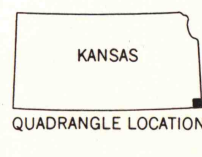
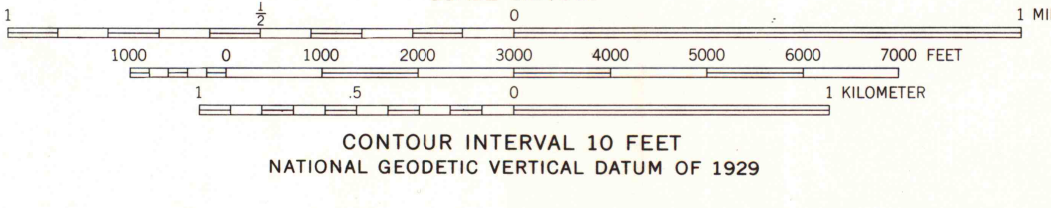
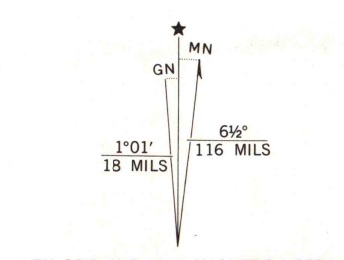
STATE OF KANSAS

BAXTER SPRINGS QUADRANGLE  
KANSAS—CHEROKEE CO.  
7.5 MINUTE SERIES (TOPOGRAPHIC)

7508 II SE  
(CAN. JUNCTION)



Mapped, edited, and published by the Geological Survey  
in cooperation with State of Kansas agencies  
Control by USGS and USC&GS  
Topography from aerial photographs by photogrammetric methods  
Aerial photographs taken 1958. Field check 1959  
Polyconic projection. 1927 North American datum  
10,000-foot grid based on Kansas coordinate system, south zone  
1000-meter Universal Transverse Mercator grid ticks,  
zone 15, shown in blue  
Red tint indicates areas in which only  
landmark buildings are shown  
Revisions shown in purple compiled from aerial photographs taken  
1977. Map edited 1978. This information not field checked  
Purple tint indicates extension of urban area



THIS MAP COMPLIES WITH NATIONAL MAP ACCURACY STANDARDS  
FOR SALE BY U.S. GEOLOGICAL SURVEY, DENVER, COLORADO 80225, OR RESTON, VIRGINIA 22092  
AND STATE GEOLOGICAL SURVEY, LAWRENCE, KANSAS 66044  
A FOLDER DESCRIBING TOPOGRAPHIC MAPS AND SYMBOLS IS AVAILABLE ON REQUEST

BAXTER SPRINGS, KANS.  
N 3700—W 9437.5/7.5  
1959  
PHOTOREVISED 1978  
AMS 7058 II SW—SERIES V878

MAP AND AIR  
LIBRARY  
APR 17 1978  
University of  
Madison