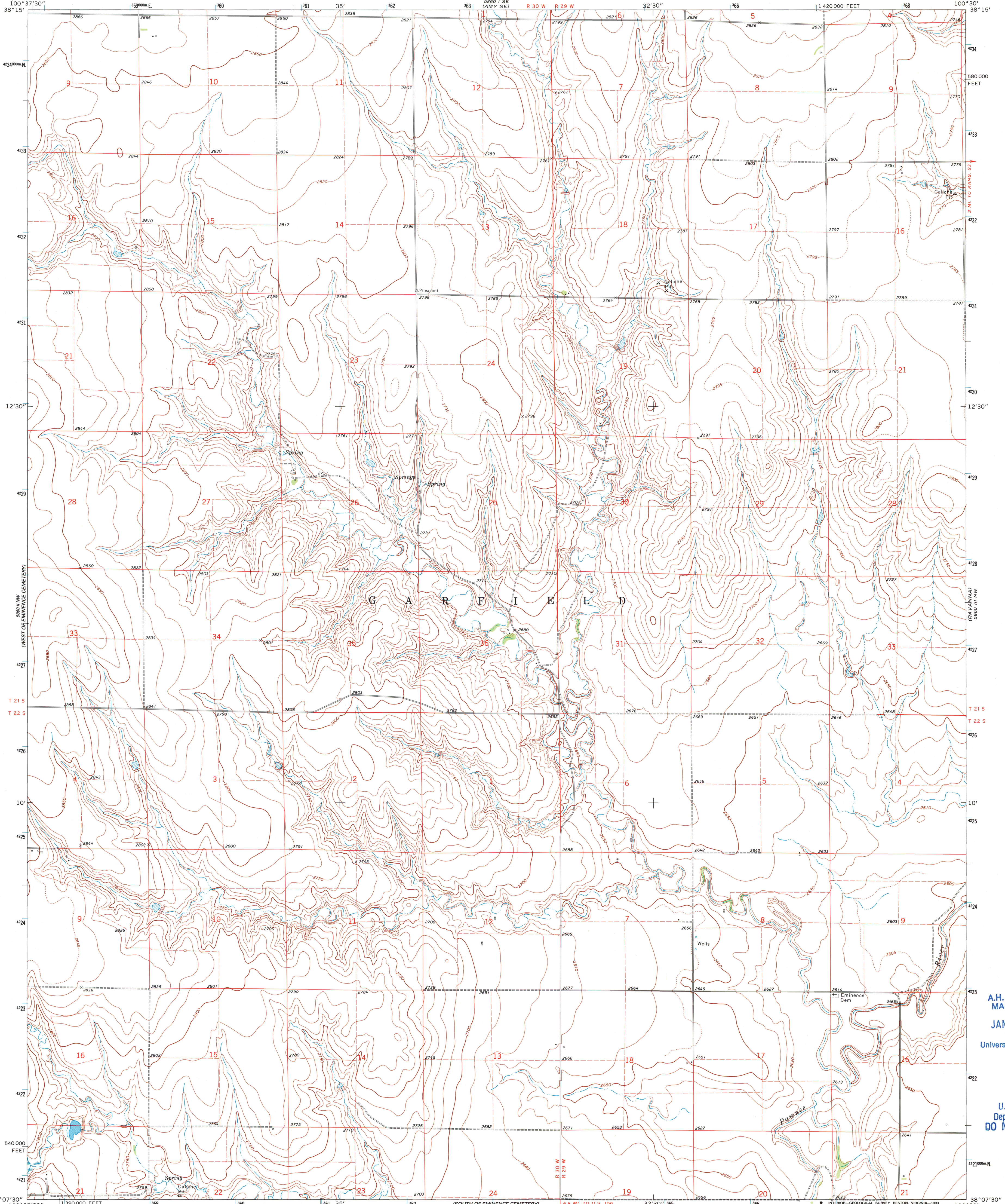


3960 1/2 SW
(41° 15' N, 100° 37' 30" W)

UNITED STATES
DEPARTMENT OF THE INTERIOR
GEOLOGICAL SURVEY

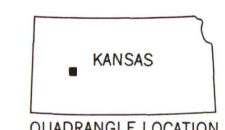
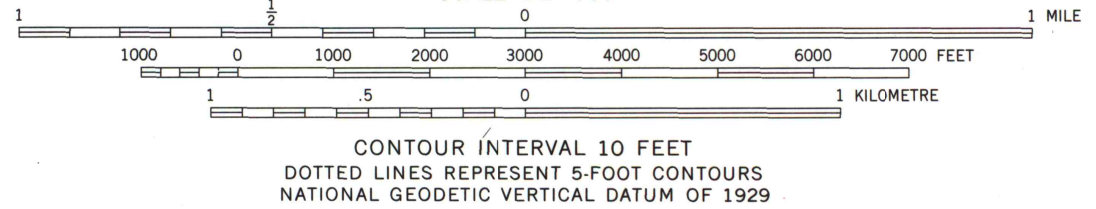
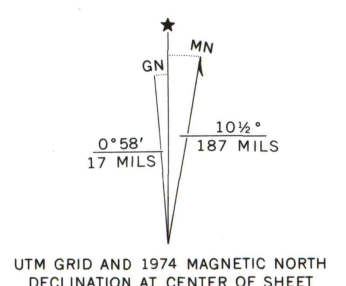
EMINENCE CEMETERY QUADRANGLE
KANSAS-FINNEY CO.
7.5 MINUTE SERIES (TOPOGRAPHIC)

3960 1/2 SW
(101° 00' 00" W, 38° 15' 00" N)



(NORTH OF PIERCE VILLE)
3960 1/2 SW
(100° 37' 30" W, 38° 07' 30" N)

Mapped, edited, and published by the Geological Survey
Control by USGS and NOS/NOAA
Topography by photogrammetric methods from aerial
photographs taken 1973. Field checked 1974
Projection and 10,000-foot grid ticks: Kansas coordinate
system, south zone (Lambert conformal conic)
1000-metre Universal Transverse Mercator grid ticks,
zone 14, shown in blue. 1927 North American datum
Fine dashed lines indicate selected fence and field lines where
generally visible on aerial photographs. This information is unchecked



ROAD CLASSIFICATION
Primary highway, hard surface. Light-duty road, hard or improved surface.
Secondary highway, hard surface. Unimproved road.
Interstate Route. U. S. Route. State Route.

EMINENCE CEMETERY, KANS.
(FORMERLY SCOTT CITY 4 NE)
38100-B5-TF-024

1974

DMA 5860 II NE - SERIES V878

A.H. ROBINSON
MAP LIBRARY
JAN 20 1994
University of Wisconsin
Madison

U.S. Regional
Depository Copy
DO NOT DISCARD

(KALLESKA SW)
3960 1/2 SW
(101° 00' 00" W, 38° 07' 30" N)