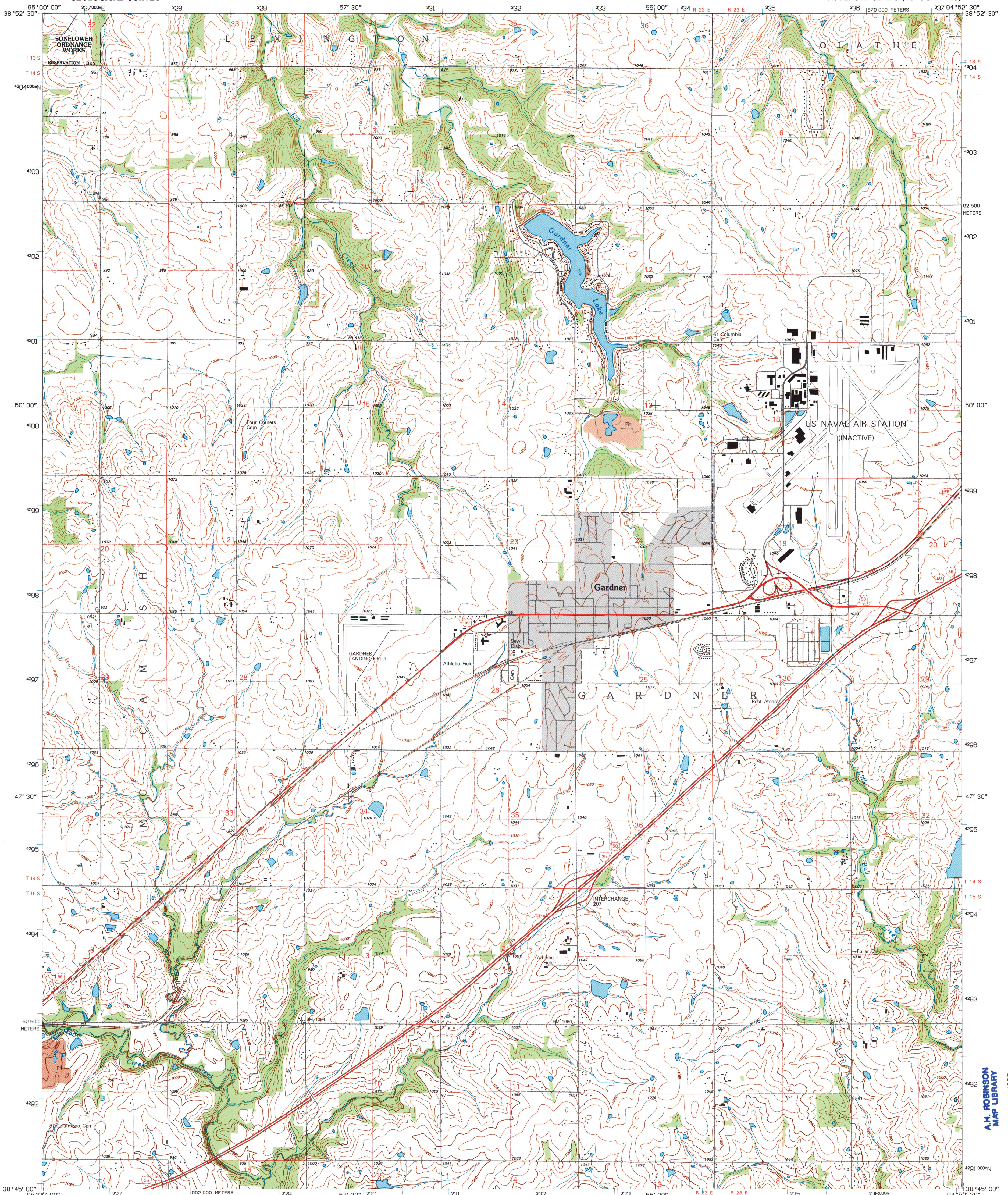
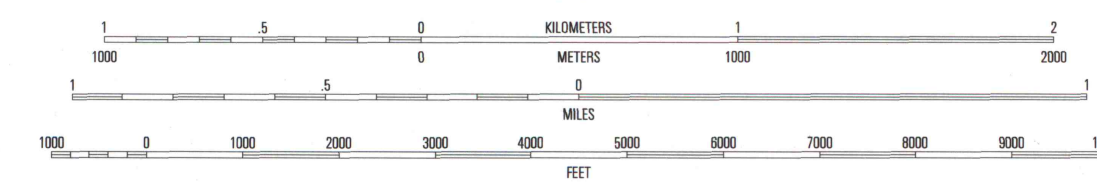
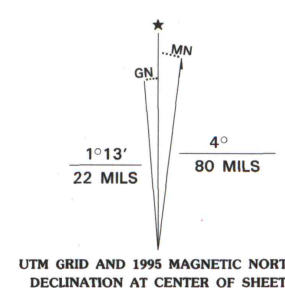


UNITED STATES
DEPARTMENT OF THE INTERIOR
GEOLOGICAL SURVEY

GARDNER QUADRANGLE
KANSAS-JOHNSON CO.
7.5-MINUTE SERIES (TOPOGRAPHIC)



Produced by the United States Geological Survey
in cooperation with State of Kansas agencies
Compiled by photogrammetric methods from imagery dated 1947-48
Field checked 1956-57. Revised from imagery dated 1991
PLSS and survey control current as of 1956-57. Map edited 1995
Contours not revised. Contours that conflict with
revised planimetry are dashed
North American Datum of 1983 (NAD 83). Projection and
blue 1000-meter ticks: Universal Transverse Mercator, zone 15
2 500-meter ticks: Kansas Coordinate System of 1983 (north zone)
North American Datum of 1927 (NAD 27) is shown by dashed
corner ticks. The values of the shift between NAD 83 and NAD 27
for 7.5-minute intersections are obtainable from National Geodetic
Survey NADCON software
There may be private inholdings within the boundaries of
the National or State reservations shown on this map



CONTOUR INTERVAL 10 FEET
NATIONAL GEODETIC VERTICAL DATUM OF 1929

FOR SALE BY U.S. GEOLOGICAL SURVEY, DENVER, COLORADO 80225, OR RESTON, VIRGINIA 22092
AND KANSAS GEOLOGICAL SURVEY, LAWRENCE, KANSAS 66044
A FOLDER DESCRIBING TOPOGRAPHIC MAPS AND SYMBOLS IS AVAILABLE ON REQUEST



QUADRANGLE LOCATION

1	2	3
4	5	6
7	8	9

- 1 Eudora
- 2 De Soto
- 3 Olathe
- 4 Edgerton
- 5 Orchestr
- 6 Wellsville
- 7 Antioch
- 8 Spring Hill

U.S. Regional
Depository Copy
DO NOT DISCARD

GARDNER, KS
38094-G8-TF-024

1991

DMA 7061 IV SW - SERIES V878

ALH ROBINSON
MAP LIBRARY
JUN 28 1996
University of Wisconsin
Madison

