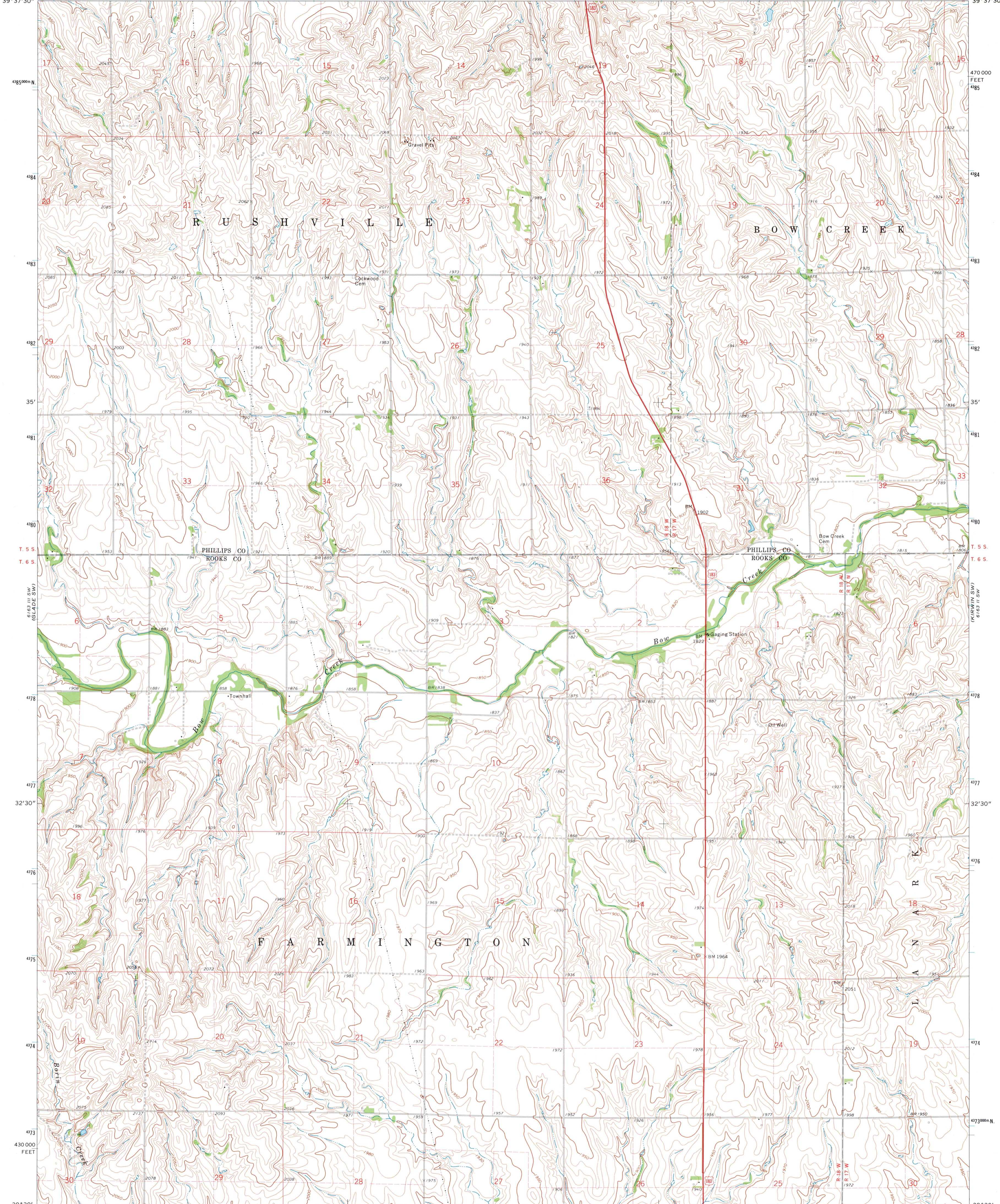
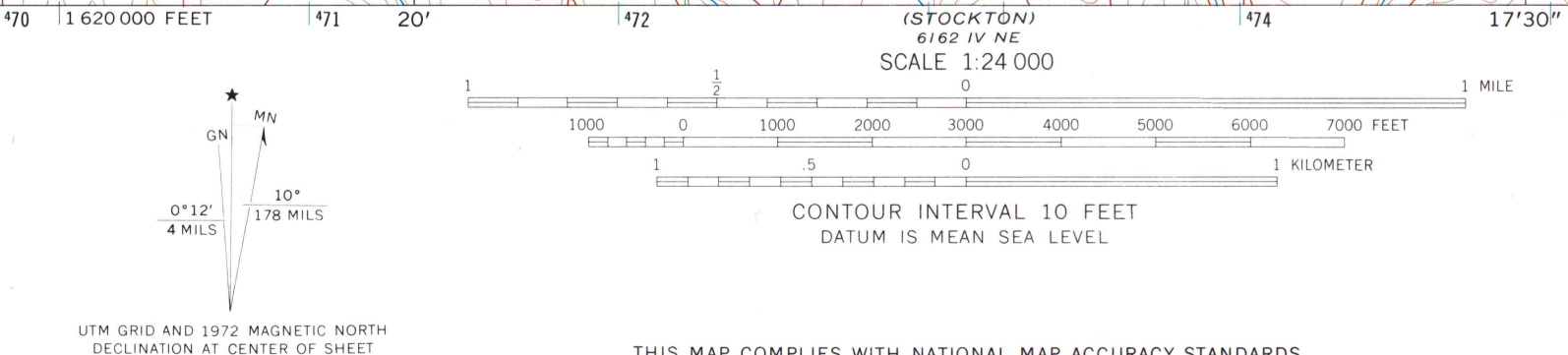


99° 22' 30" 6163 III NW
39° 37' 30" 1680000 E 469 470 471 20' 472 (PHILLIPSBURG SOUTH) PHILLIPSBURG 9 MI GLADE 4.1 MI R 18 W 17' 30" R 17 W 476 1 640 000 FEET 477 99° 15' 39° 37' 30"



6163 III SW (GLADE SW)
T. 5 S
T. 6 S
32' 30"
478
477
476
475
474
473
430 000 FEET
39° 30' 99° 22' 30" 1680000 E 469 470 471 20' 472 (STOCKTON) 6162 IV NE 474 17' 30" STOCKTON 4.2 MI PLAINVILLE 19 MI
473000m N 99° 15'

Mapped, edited, and published by the Geological Survey
Control by USGS and USC&GS
Topography by photogrammetric methods from aerial photographs taken 1971. Field checked 1972
Projection and 10,000-foot grid ticks: Kansas coordinate system, north zone (Lambert conformal conic)
1000-meter Universal Transverse Mercator grid ticks, zone 14, shown in blue. 1927 North American datum
Fine red dashed lines indicate selected fence and field lines where generally visible on aerial photographs. This information is unchecked



ROAD CLASSIFICATION
Primary highway, hard surface
Secondary highway, hard surface
Light-duty road, hard or improved surface
Unimproved road
Interstate Route
U. S. Route
State Route

MAP AND AIR PHOTO LIBRARY
MAR 18 1974
University of Wisconsin

GLADE SE, KANS.
N3930-W9915/7.5
1972
AMS 6163 III SE-SERIES V878

THIS MAP COMPLIES WITH NATIONAL MAP ACCURACY STANDARDS
FOR SALE BY U. S. GEOLOGICAL SURVEY, DENVER, COLORADO 80225, OR WASHINGTON, D. C. 20242
AND BY THE STATE GEOLOGICAL SURVEY, LAWRENCE, KANSAS 66044
A FOLDER DESCRIBING TOPOGRAPHIC MAPS AND SYMBOLS IS AVAILABLE ON REQUEST