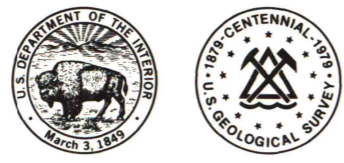


6758 II SE  
6758 II SE

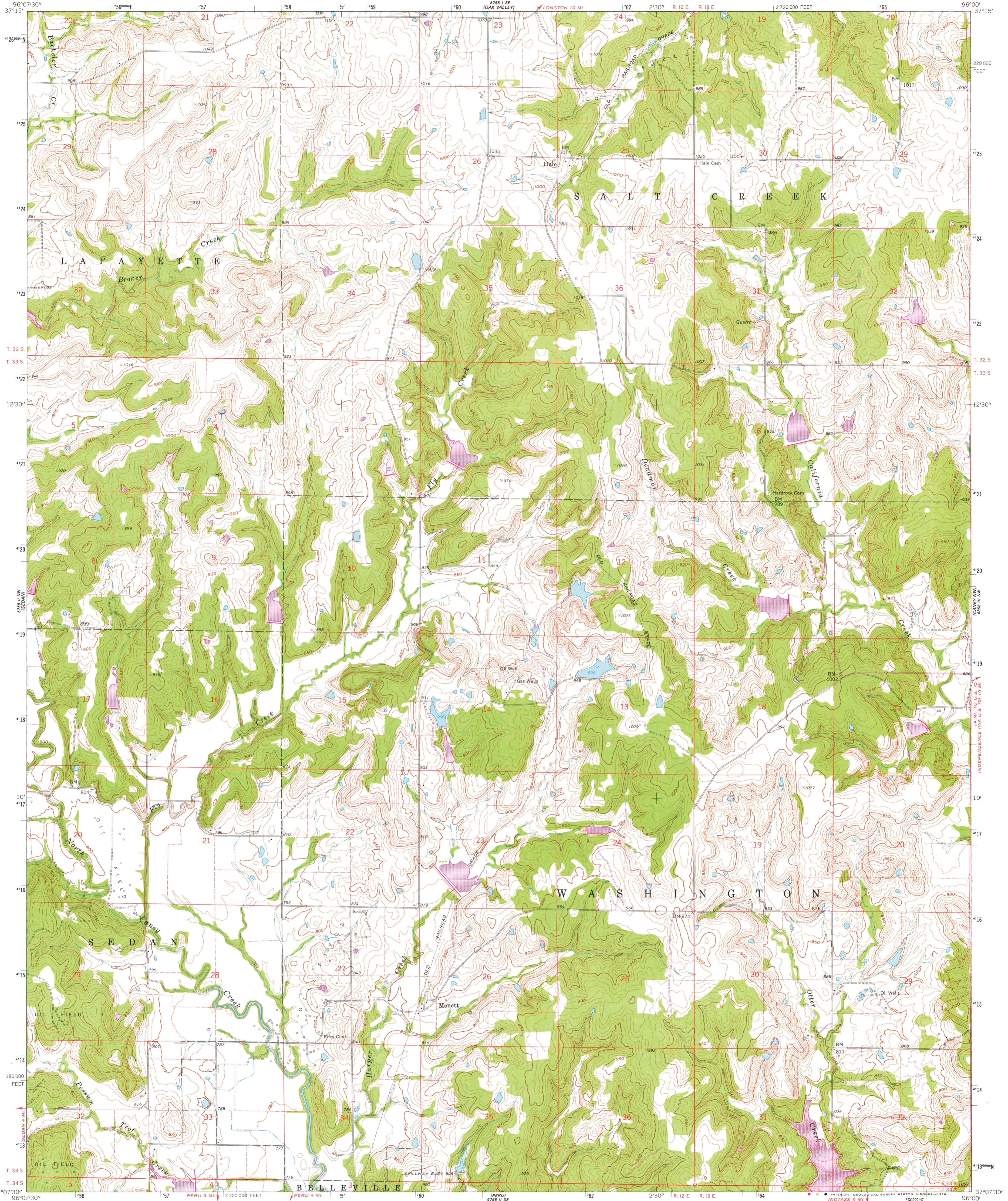
UNITED STATES  
DEPARTMENT OF THE INTERIOR  
GEOLOGICAL SURVEY



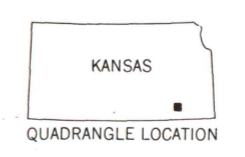
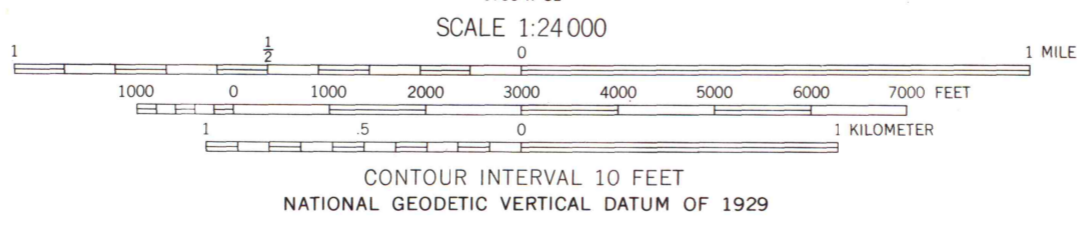
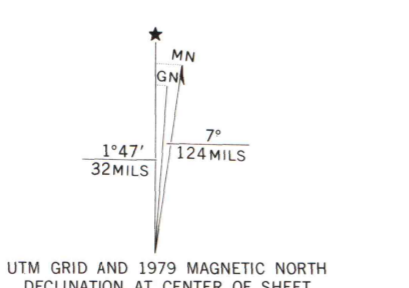
STATE OF KANSAS

HALE QUADRANGLE  
KANSAS—CHAUTAQUA CO.  
7.5 MINUTE SERIES (TOPOGRAPHIC)

6758 II SE  
6758 II SE



Mapped, edited, and published by the Geological Survey in cooperation with State of Kansas agencies  
Control by USGS and USC&GS  
Topography by photogrammetric methods from aerial photographs taken 1960. Field checked 1962  
Polyconic projection. 1927 North American datum 10,000-foot grid based on Kansas coordinate system, south zone 1000-meter Universal Transverse Mercator grid ticks, zone 14, shown in blue  
Area covered by dashed light-blue pattern is subject to controlled inundation  
Fine red dashed lines indicate selected fence and field lines where generally visible on aerial photographs. This information is unchecked  
Revisions shown in purple and woodland compiled from aerial photographs taken, 1976 and other source data. This information not field checked. Map edited 1979



MAP AND AIR PHOTO LIBRARY  
JUN 26 1979  
University of Wisconsin  
Madison  
HALE, KANS.  
N 3707.5—W 9600/7.5  
1962  
PHOTOREVISED 1979  
AMS 6758 II NE—SERIES V878

THIS MAP COMPLIES WITH NATIONAL MAP ACCURACY STANDARDS  
FOR SALE BY U. S. GEOLOGICAL SURVEY, DENVER, COLORADO 80225 OR RESTON, VIRGINIA 22092  
AND STATE GEOLOGICAL SURVEY, LAWRENCE, KANSAS 66044  
A FOLDER DESCRIBING TOPOGRAPHIC MAPS AND SYMBOLS IS AVAILABLE ON REQUEST