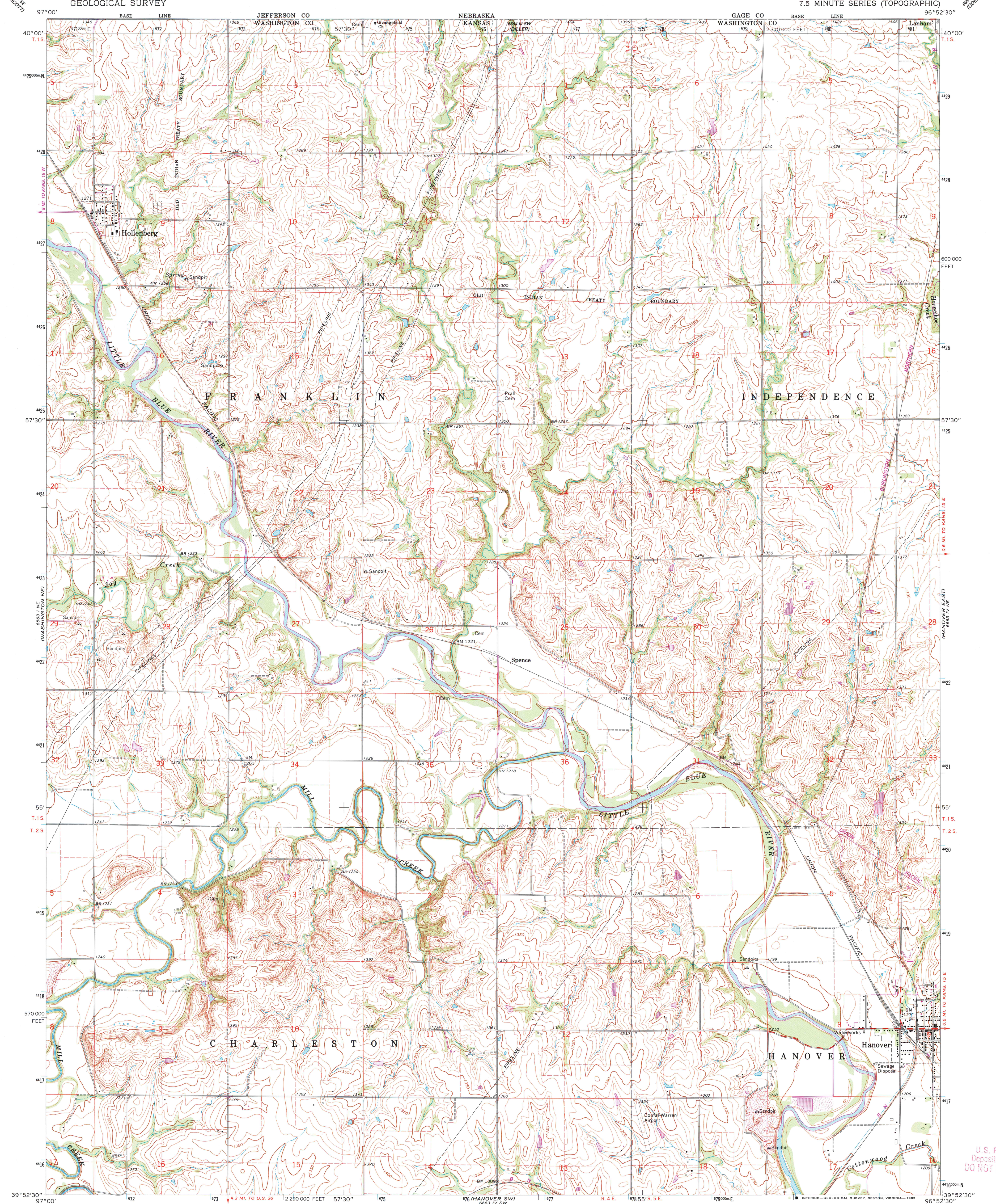
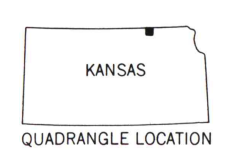
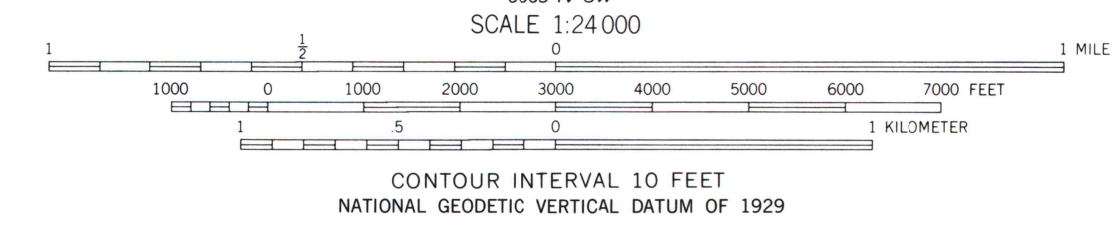
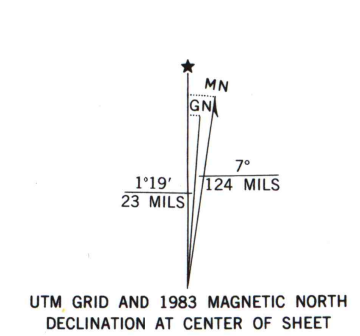


6663 IV SE  
(6063 IV SE)

6663 IV SE  
(6063 IV SE)



Mapped, edited, and published by the Geological Survey in cooperation with State of Kansas agencies  
Control by USGS and USC&GS  
Topography by photogrammetric methods from aerial photographs taken 1965. Field checked 1966  
Polyconic projection. 1927 North American datum 10,000-foot grid based on Kansas coordinate system, north zone 1000-meter Universal Transverse Mercator grid ticks, zone 14, shown in blue  
To place on the predicted North American Datum 1983, move the projection lines 3 meters north and 26 meters east as shown by dashed corner ticks  
Revisions shown in purple compiled from aerial photographs taken 1981 and other sources. This information not field checked. Map edited 1983



ROAD CLASSIFICATION  
Medium-duty ——— Light-duty ———  
Unimproved dirt ———

HANOVER WEST, KANS.  
N3952.5 — W9652.5/7.5

A.H. ROBINSON  
MAP LIBRARY  
DEC 11 1984  
University of Wisconsin  
Madison