

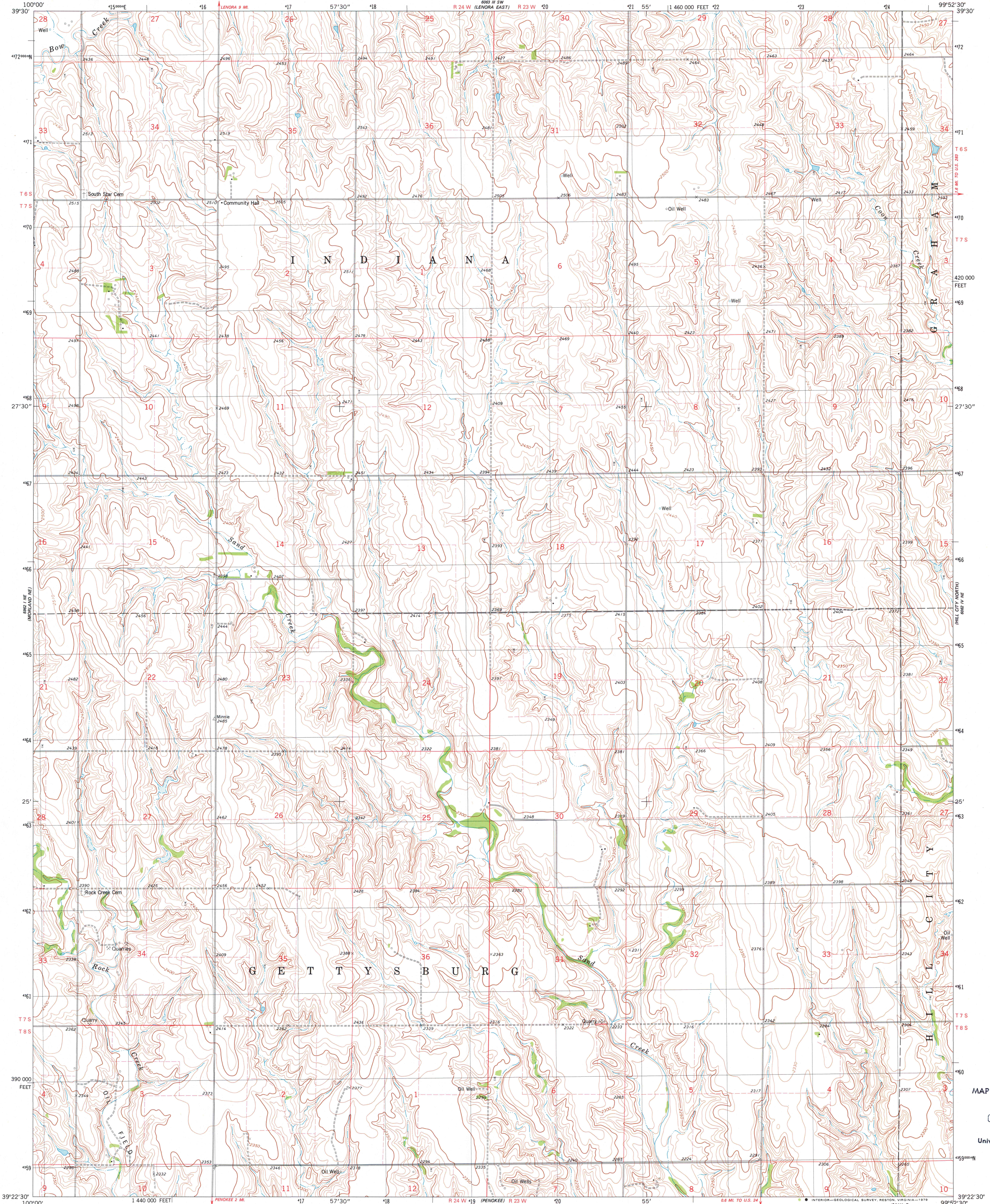
6063 IV SW
(LENORA WEST)

UNITED STATES
DEPARTMENT OF THE INTERIOR
GEOLOGICAL SURVEY

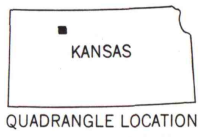
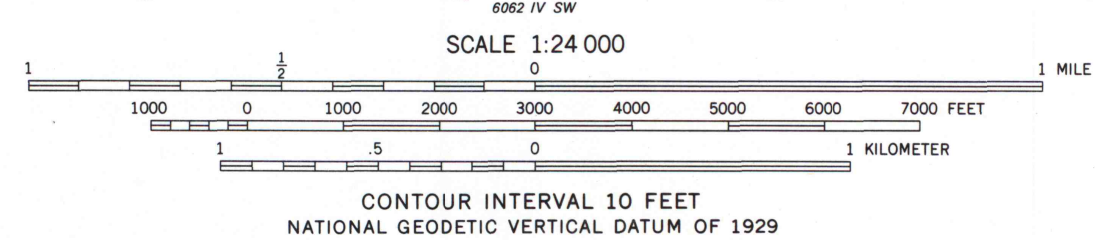
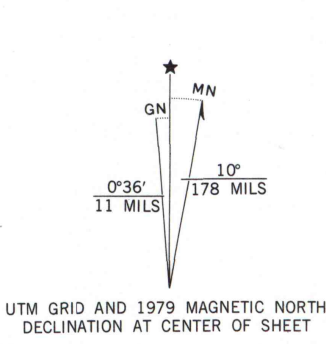


HILL CITY NW QUADRANGLE
KANSAS—GRAHAM CO.
7.5 MINUTE SERIES (TOPOGRAPHIC)

6063 IV SE
(LENORA EAST)



Mapped, edited, and published by the Geological Survey
Control by USGS and NOS/NOAA
Topography by photogrammetric methods from aerial photographs taken 1974. Field checked 1975. Map edited 1979
Projection and 10,000-foot grid ticks: Kansas coordinate system, north zone (Lambert conformal conic)
1000-meter Universal Transverse Mercator grid, zone 14 1927 North American datum
Fine red dashed lines indicate selected fence and field lines where generally visible on aerial photographs. This information is unchecked



ROAD CLASSIFICATION

Primary highway, hard surface	Light-duty road, hard or improved surface
Secondary highway, hard surface	Unimproved road
Interstate Route	U. S. Route
	State Route

THIS MAP COMPLIES WITH NATIONAL MAP ACCURACY STANDARDS
FOR SALE BY U. S. GEOLOGICAL SURVEY, DENVER, COLORADO 80225, OR RESTON, VIRGINIA 22092
AND STATE GEOLOGICAL SURVEY, LAWRENCE, KANSAS 66044
A FOLDER DESCRIBING TOPOGRAPHIC MAPS AND SYMBOLS IS AVAILABLE ON REQUEST

HILL CITY NW, KANS.
N3922.5-W9525.7.5

1979

AMS 6062 IV NW—SERIES V878

MAP AND AIR PHOTO LIBRARY
OCT 30 1979
University of Wisconsin
Madison