

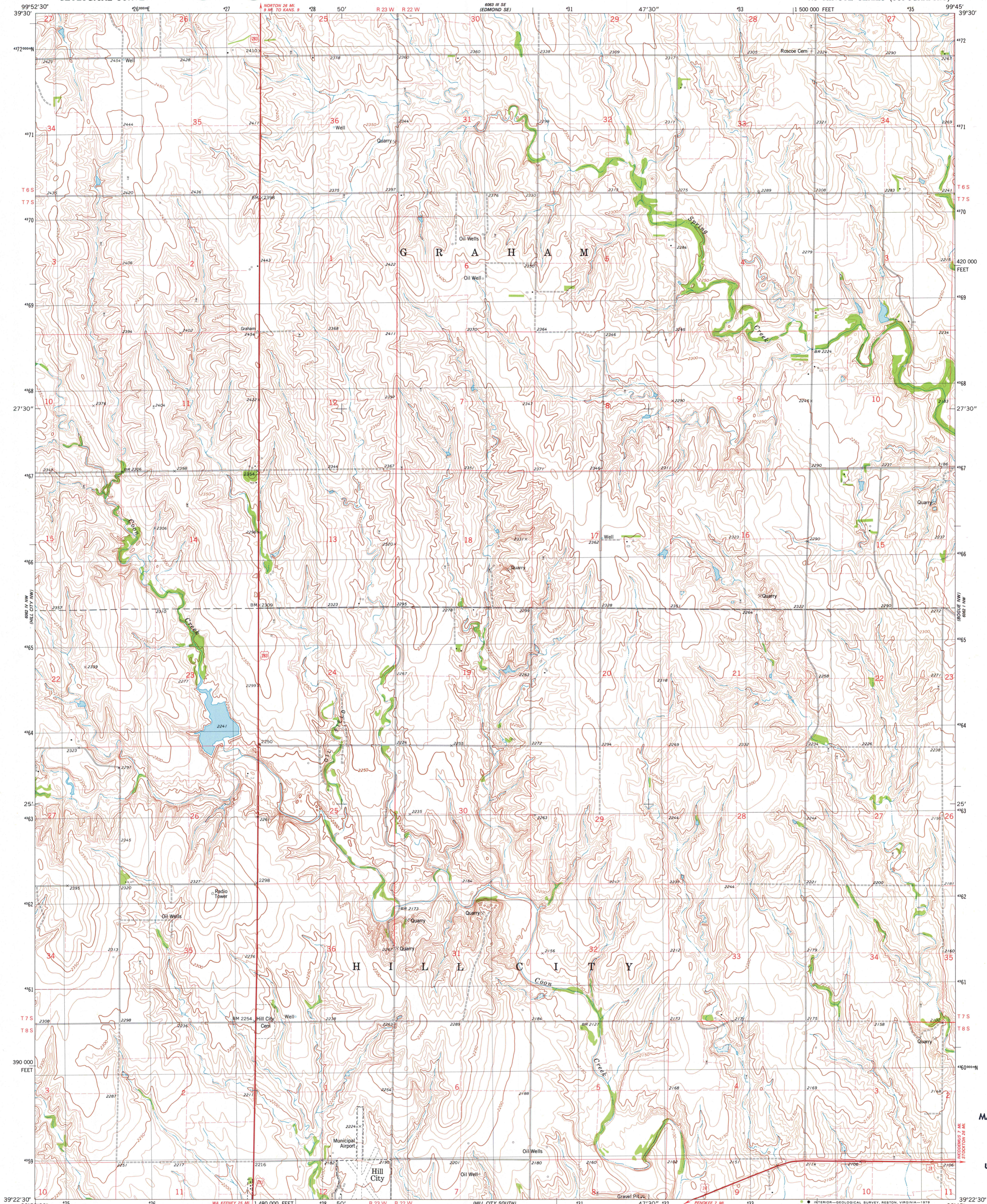
6063 IV NE (Lambert 2457)

UNITED STATES DEPARTMENT OF THE INTERIOR GEOLOGICAL SURVEY

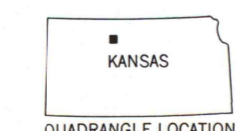
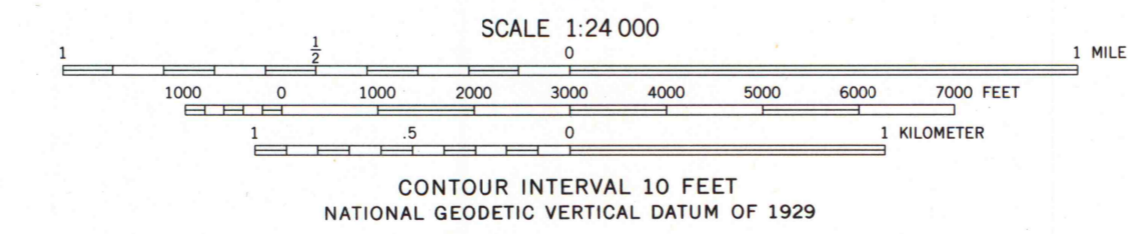
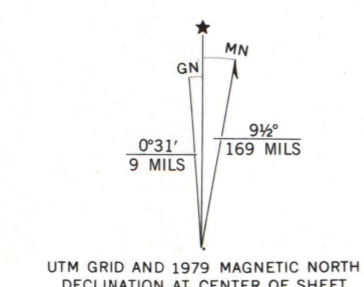


HILL CITY NORTH QUADRANGLE KANSAS-GRAHAM CO. 7.5 MINUTE SERIES (TOPOGRAPHIC)

6063 IV NE (Lambert 2457)



Mapped, edited, and published by the Geological Survey Control by USGS and NOS/NOAA Topography by photogrammetric methods from aerial photographs taken 1974. Field checked 1975. Map edited 1979 Projection and 10,000-foot grid ticks: Kansas coordinate system, north zone (Lambert conformal conic) 1000-meter Universal Transverse Mercator grid, zone 14 1927 North American datum Fine red dashed lines indicate selected fence and field lines where generally visible on aerial photographs. This information is unchecked



ROAD CLASSIFICATION table with symbols for Primary highway, Secondary highway, Interstate Route, U. S. Route, State Route, Light-duty road, and Unimproved road.

THIS MAP COMPLIES WITH NATIONAL MAP ACCURACY STANDARDS FOR SALE BY U. S. GEOLOGICAL SURVEY, DENVER, COLORADO 80225, OR RESTON, VIRGINIA 22092 AND STATE GEOLOGICAL SURVEY, LAWRENCE, KANSAS 66044 A FOLDER DESCRIBING TOPOGRAPHIC MAPS AND SYMBOLS IS AVAILABLE ON REQUEST

HILL CITY NORTH, KANS. N3922.5-W99457.5

1979

AMS 6062 IV NE-SERIES V878

MAP AND AIR P LIBRARY OCT 30 1977 University of Wisconsin Madison