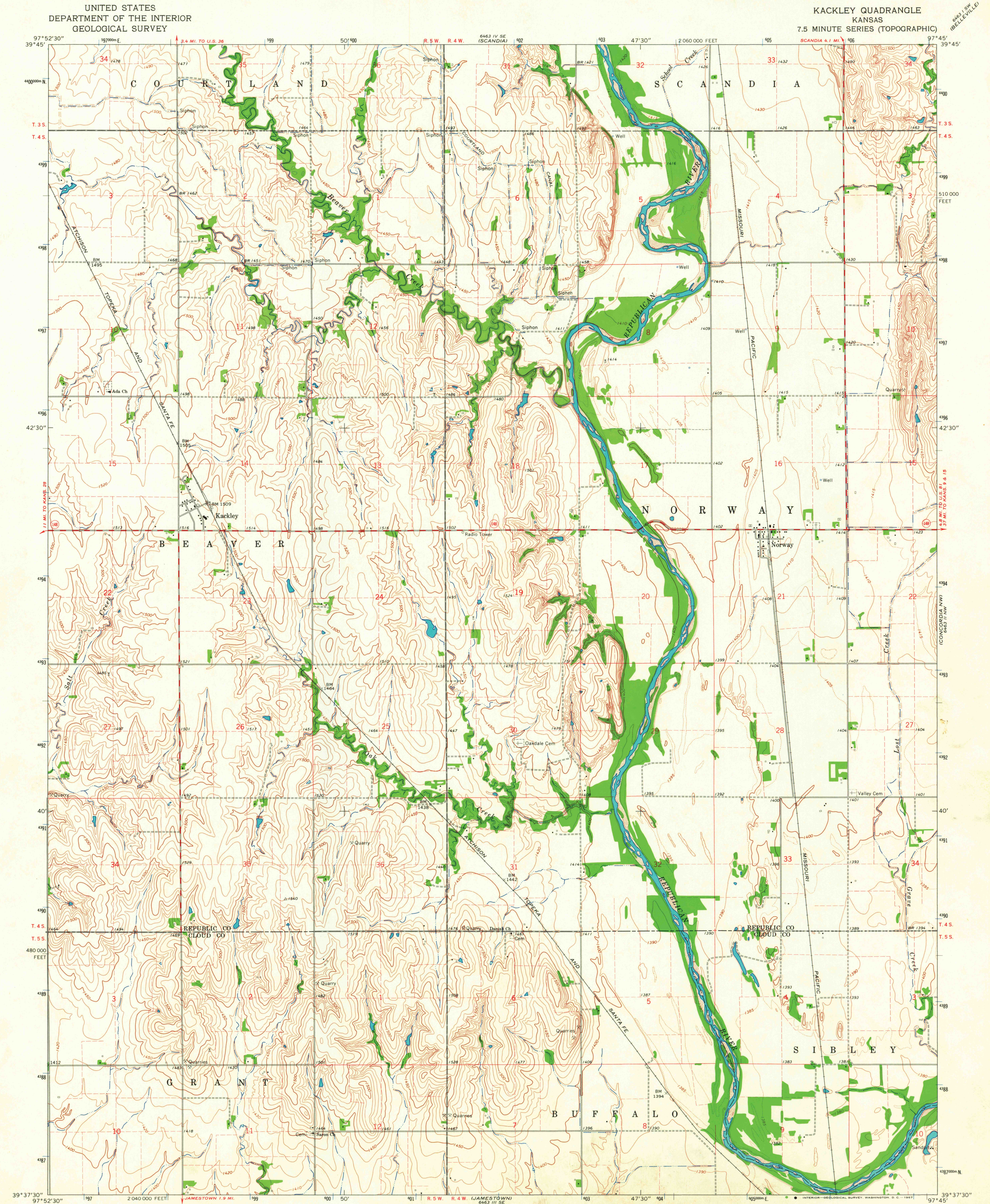


UNITED STATES
DEPARTMENT OF THE INTERIOR
GEOLOGICAL SURVEY

KACKLEY QUADRANGLE
KANSAS
7.5 MINUTE SERIES (TOPOGRAPHIC)



Mapped, edited, and published by the Geological Survey as part of the Department of the Interior program for the development of the Missouri River Basin Control by USGS and USC&GS
Topography by photogrammetric methods from aerial photographs taken 1964 and planetable surveys 1965
Polyconic projection. 1927 North American datum
10,000-foot grid based on Kansas coordinate system, north zone
1000-meter Universal Transverse Mercator grid ticks, zone 14, shown in blue
Fine red dashed lines indicate selected fence and field lines where generally visible on aerial photographs. This information is unchecked

UTM GRID AND 1965 MAGNETIC NORTH DECLINATION AT CENTER OF SHEET

SCALE 1:24,000
1 2 3 4 5 6 7 8 9 10 11 12 13 14 15 16 17 18 19 20 21 22 23 24 25 26 27 28 29 30 31 32 33 34 35 36
1000 0 1000 2000 3000 4000 5000 6000 7000 FEET
1 5 10 15 20 25 30 35 40 KILOMETER
CONTOUR INTERVAL 10 FEET
DOTTED LINES REPRESENT 5-FOOT CONTOURS
DATUM IS MEAN SEA LEVEL

THIS MAP COMPLIES WITH NATIONAL MAP ACCURACY STANDARDS
FOR SALE BY U.S. GEOLOGICAL SURVEY, DENVER, COLORADO 80225, OR WASHINGTON, D. C. 20242
AND BY THE STATE GEOLOGICAL SURVEY, LAWRENCE, KANSAS 66044
A FOLDER DESCRIBING TOPOGRAPHIC MAPS AND SYMBOLS IS AVAILABLE ON REQUEST

USGS
Historical File
Topographic Division

KANSAS
QUADRANGLE LOCATION

U.S.G.S.
FILE COPY
TOPOGRAPHIC DIVISION

ROAD CLASSIFICATION
Medium-duty ——— Light-duty ———
Unimproved dirt ———
State Route

KACKLEY, KANS.
N3937.5—W9745/7.5
1965
AMS 6463 III NE—SERIES V878

MAY 11 1967