

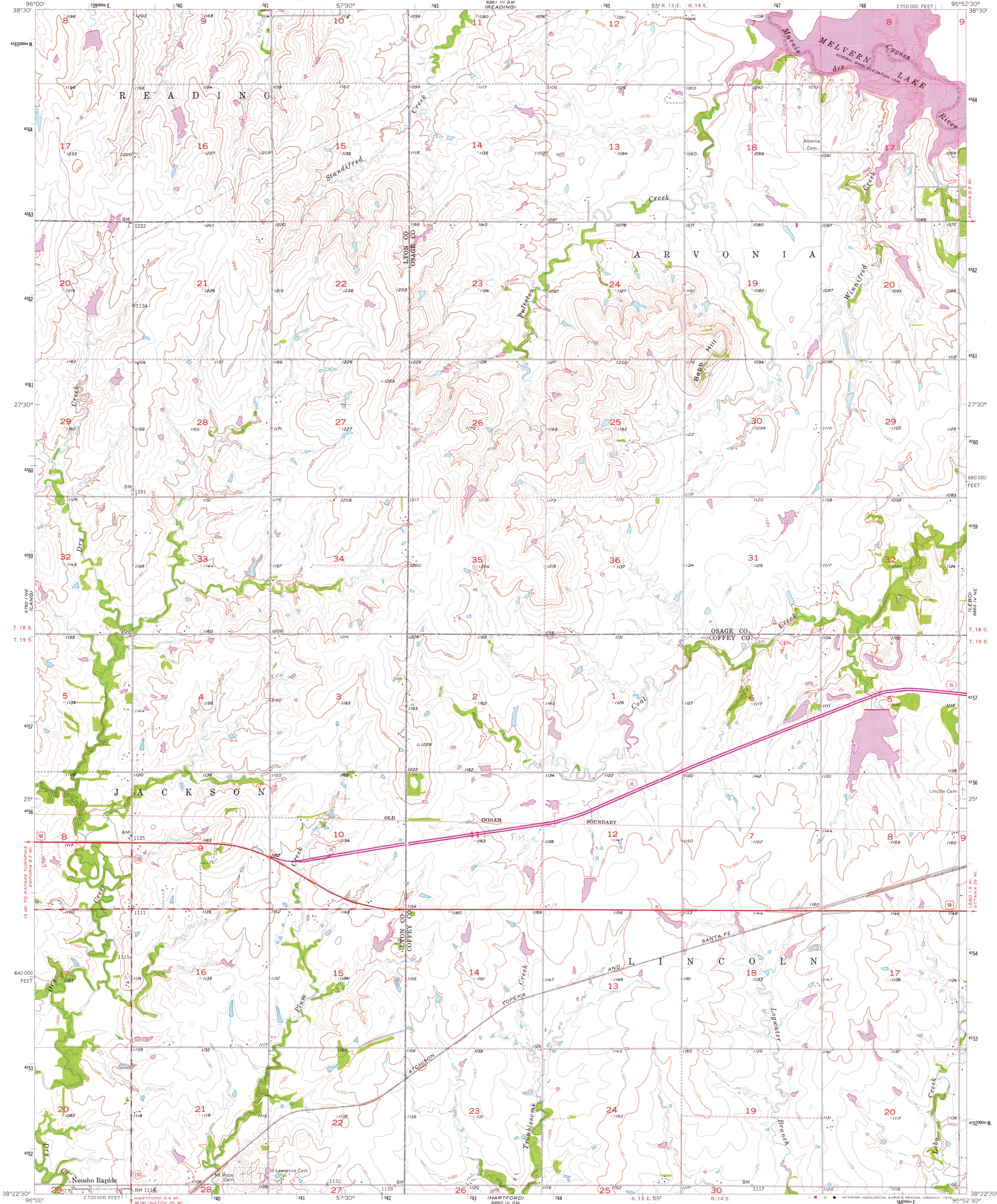
6860 IV SE
6860 IV SE

UNITED STATES
DEPARTMENT OF THE INTERIOR
GEOLOGICAL SURVEY

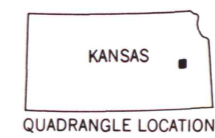
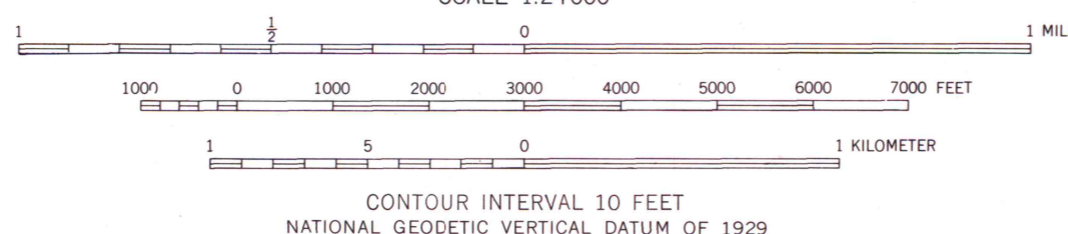
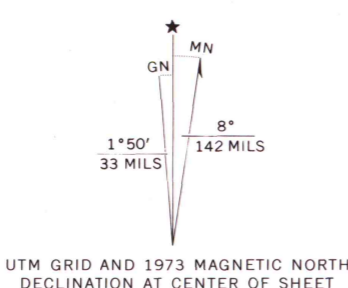
STATE OF KANSAS

LEBO NW QUADRANGLE
KANSAS
7.5 MINUTE SERIES (TOPOGRAPHIC)

6860 IV SE
OSAGE CITY



Mapped, edited, and published by the Geological Survey in cooperation with State of Kansas agencies. Control by USGS and USC&GS. Topography from aerial photographs by Kelsh plotter. Aerial photographs taken 1956. Field check 1957. Polyconic projection. 1927 North American datum. 10,000-foot grid based on Kansas coordinate system, south zone. 1000-meter Universal Transverse Mercator grid ticks, zone 15, shown in blue. Revisions shown in purple compiled from aerial photographs taken 1973. This information not field checked.



ROAD CLASSIFICATION	
Heavy-duty	Light-duty
Medium-duty	Unimproved dirt
U.S. Route	State Route
	Interstate Route

MAP AND AIR PHOTO

LEBO NW, KANSAS
N 3822.5 - W 9552.5 / 7.5

APR 24 1976

1957
PHOTOREVISED 1973
AMS 6860 IV NW - SERIES V878

THIS MAP COMPLIES WITH NATIONAL MAP ACCURACY STANDARDS FOR SALE BY U.S. GEOLOGICAL SURVEY, DENVER, COLORADO 80225, OR RESTON, VIRGINIA 22092 AND STATE GEOLOGICAL SURVEY, LAWRENCE, KANSAS 66044. A FOLDER DESCRIBING TOPOGRAPHIC MAPS AND SYMBOLS IS AVAILABLE ON REQUEST.

University of Wisconsin