

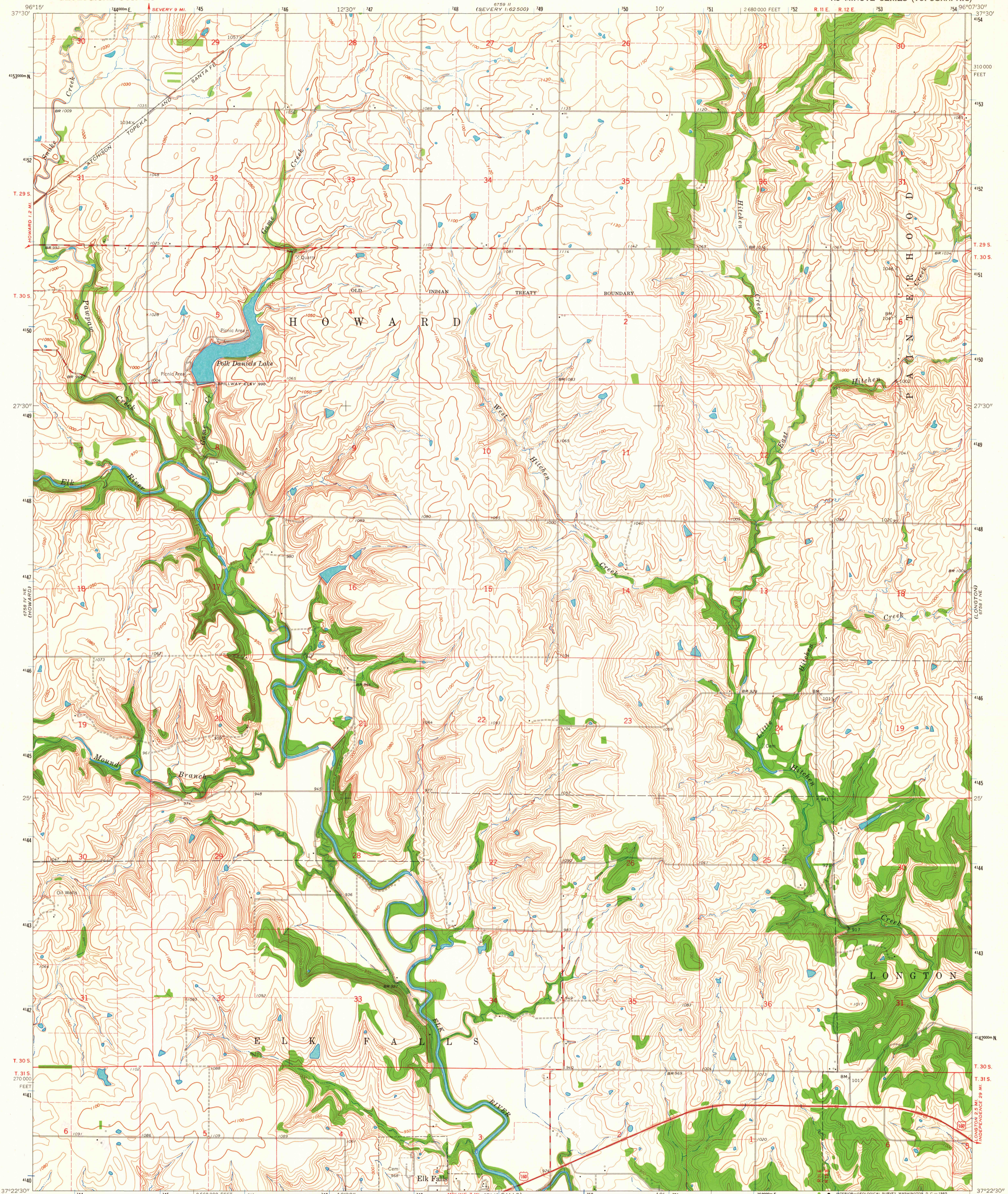
6758 II E  
(PIEDMONT)

UNITED STATES  
DEPARTMENT OF THE INTERIOR  
GEOLOGICAL SURVEY

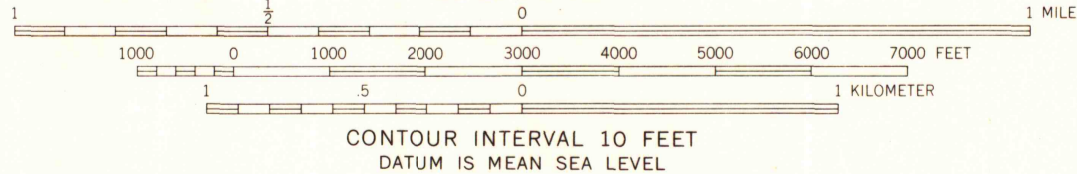
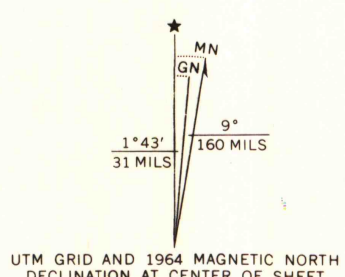
STATE OF KANSAS

LONGTON NW QUADRANGLE  
KANSAS—ELK CO.  
7.5 MINUTE SERIES (TOPOGRAPHIC)

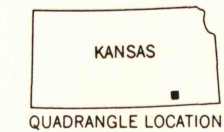
6758 II  
(SEVERY 1:62,500)



Mapped, edited, and published by the Geological Survey  
in cooperation with State of Kansas agencies  
Control by USGS and USC&GS  
Topography by photogrammetric methods from aerial  
photographs taken 1962. Field checked 1964  
Polyconic projection. 1927 North American datum  
10,000-foot grid based on Kansas coordinate system, south zone  
1000-meter Universal Transverse Mercator grid ticks,  
zone 14, shown in blue  
Fine red dashed lines indicate selected fence and field lines where  
generally visible on aerial photographs. This information is unchecked



ROAD CLASSIFICATION  
Heavy-duty ——— Light-duty ———  
Medium-duty ——— Unimproved dirt ———  
U.S. Route



THIS MAP COMPLIES WITH NATIONAL MAP ACCURACY STANDARDS  
FOR SALE BY U.S. GEOLOGICAL SURVEY, DENVER 25, COLORADO OR WASHINGTON 25, D. C.  
AND BY THE STATE GEOLOGICAL SURVEY, LAWRENCE, KANSAS  
A FOLDER DESCRIBING TOPOGRAPHIC MAPS AND SYMBOLS IS AVAILABLE ON REQUEST

MAP AND AIR PHOTO LIBRARY  
University of Wisconsin

LONGTON NW, KANS.  
N3722.5—W9607.5/7.5

1964  
AMS 6758 I NW—SERIES V878

6758 II  
(SEVERY 1:62,500)

(LONGTON)  
6758 I NE

(ELK FALLS)  
6758 I SE