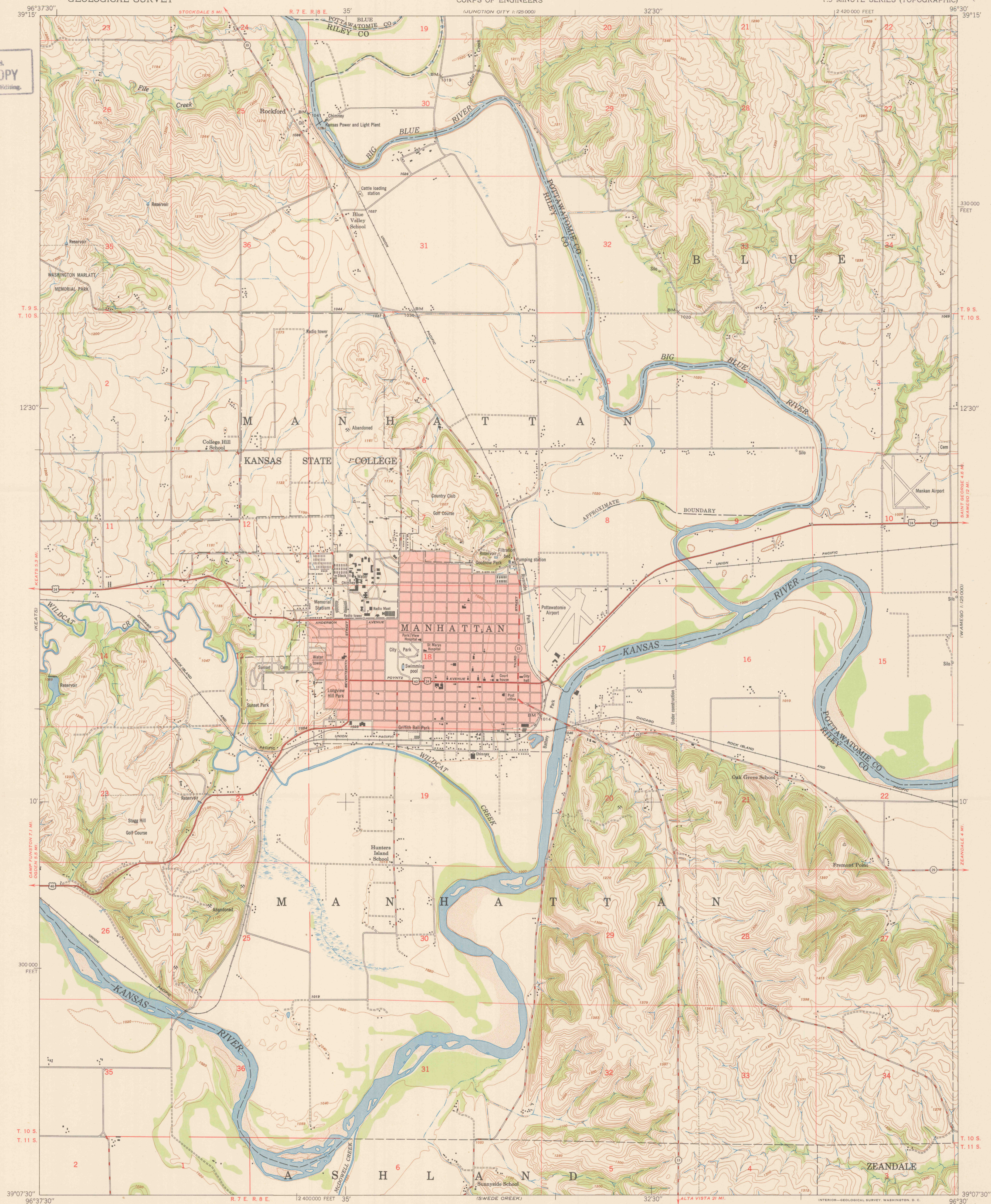
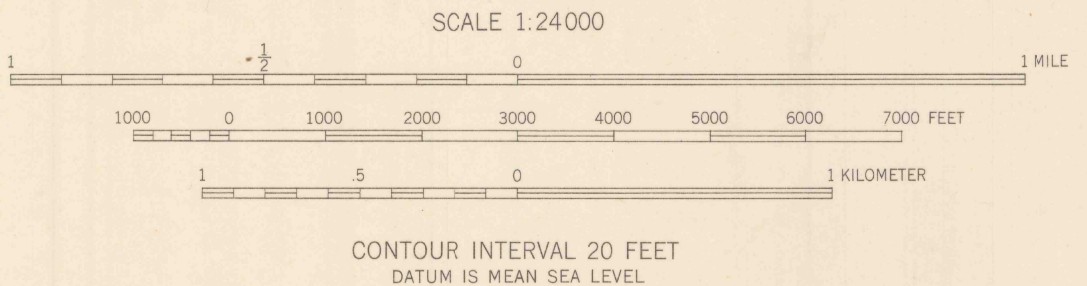
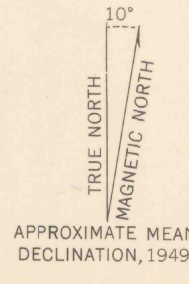


U.S.G.S.
FILE COPY
Inspection and Editing



Mapped by the Army Map Service
Edited and published by the Geological Survey
Control by USC&GS, GS, and CE
Topography from aerial photographs by multiplex methods
Aerial photographs taken 1947. Field check 1949
Polyconic projection. 1927 North American datum
10,000-foot grid based on Kansas coordinate system,
north zone
Unchecked elevations are shown in brown
Red tint indicates area in which only
landmark buildings are shown
No distinction is made between dwellings, barns,
commercial and industrial buildings



USCS
Historical File
Topographic Division

ROAD CLASSIFICATION

HARD-SURFACE ALL WEATHER ROADS	DRY WEATHER ROADS
Heavy-duty 4 LANE 10 LANE	Improved dirt
Medium-duty 4 LANE 10 LANE	Unimproved dirt
Loose-surface, graded, or narrow hard-surface	
U. S. Route	State Route

U.S.G.S.
FILE COPY
Inspection and Editing

THIS MAP COMPLIES WITH NATIONAL MAP ACCURACY STANDARDS
FOR SALE BY U. S. GEOLOGICAL SURVEY, FEDERAL CENTER, DENVER, COLORADO OR WASHINGTON 25, D. C.
A FOLDER DESCRIBING TOPOGRAPHIC MAPS AND SYMBOLS IS AVAILABLE ON REQUEST

MANHATTAN, KANS.
N3907.5-W9630/7.5
EDITION OF 1950