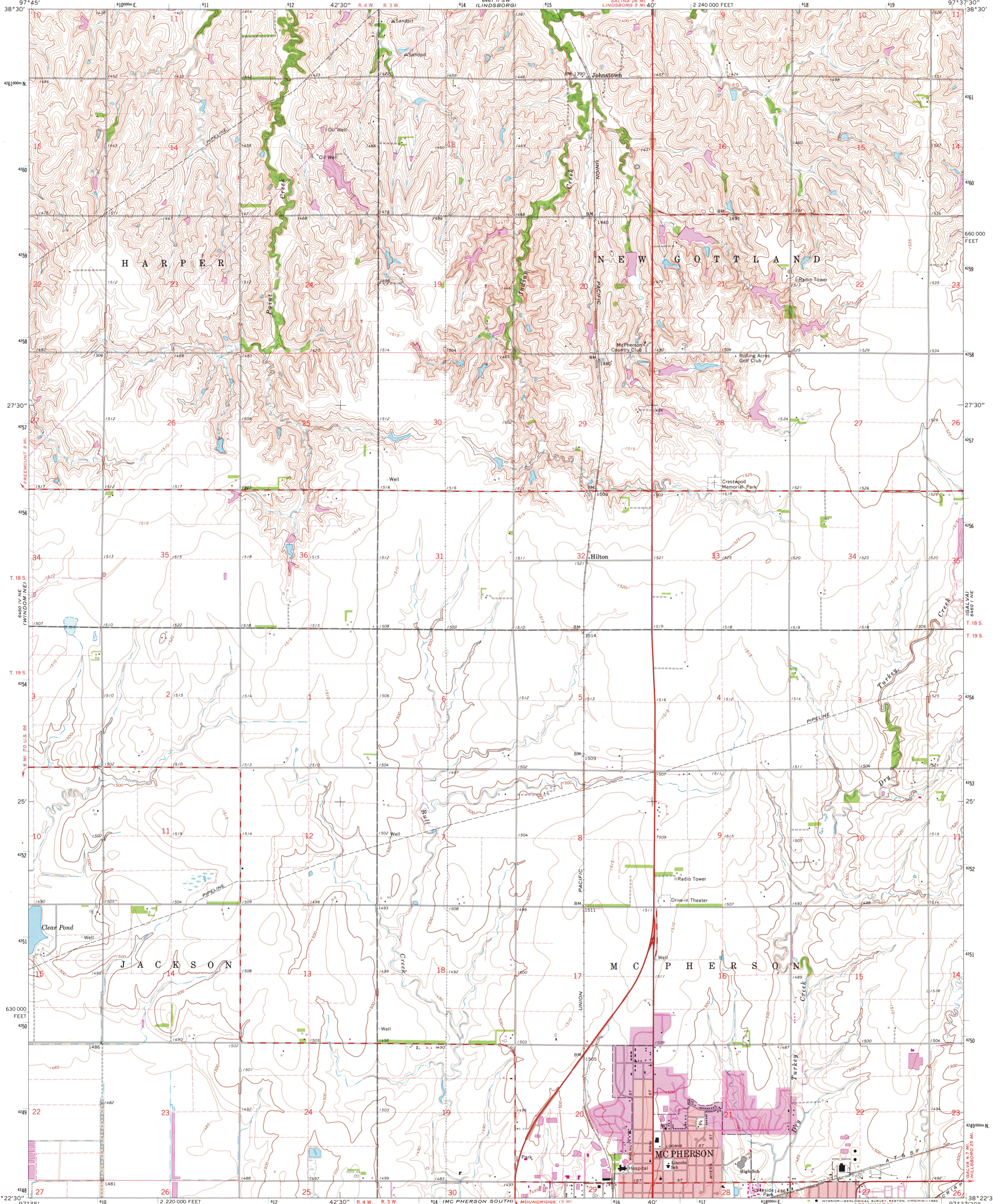


6461 11 SE (LINDSBORG)

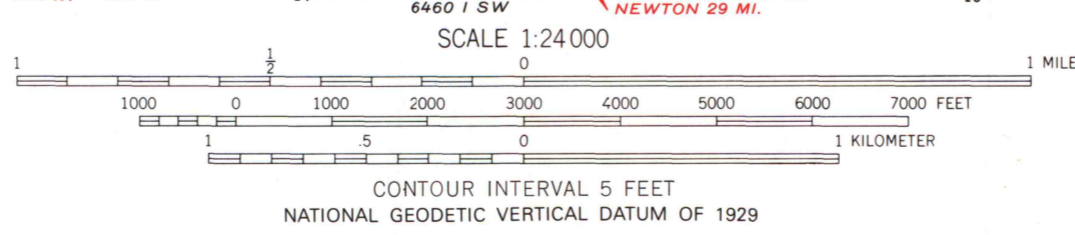
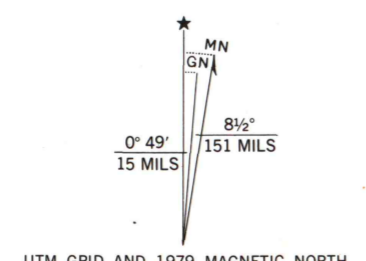
6461 11 SE (LINDSBORG SE)

UNITED STATES DEPARTMENT OF THE INTERIOR GEOLOGICAL SURVEY

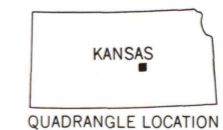
MC PHERSON NORTH QUADRANGLE KANSAS—MC PHERSON CO. 7.5 MINUTE SERIES (TOPOGRAPHIC)



Mapped, edited, and published by the Geological Survey... Control by USGS and USC&GS... Topography by photogrammetric methods from aerial photographs taken 1962. Field checked 1965... Polyconic projection. 1927 North American datum 10,000-foot grid based on Kansas coordinate system, south zone 1000-meter Universal Transverse Mercator grid ticks, zone 14, shown in blue... To place on the predicted North American Datum 1983 move the projection lines 1 meter north and 28 meters east as shown by dashed corner ticks... Revisions shown in purple compiled in cooperation with State of Kansas agencies from aerial photographs taken 1978. Map edited 1979. This information not field checked... Purple tint indicates extension of urban area



ROAD CLASSIFICATION table with categories: Heavy-duty, Light-duty, Medium-duty, Unimproved dirt, U.S. Route.



THIS MAP COMPLIES WITH NATIONAL MAP ACCURACY STANDARDS FOR SALE BY U.S. GEOLOGICAL SURVEY, DENVER, COLORADO 80225, OR RESTON, VIRGINIA 22092 AND STATE GEOLOGICAL SURVEY, LAWRENCE, KANSAS 66044 A FOLDER DESCRIBING TOPOGRAPHIC MAPS AND SYMBOLS IS AVAILABLE ON REQUEST

MC PHERSON NORTH, KANS. N3822.5—W9737.5/7.5

1965 PHOTOREVISED 1979 DMA 6461 11 N—SERIES V878

MAP AND AIR PHC LIBRARY MAY 27 1980 University of Wisconsin Madison