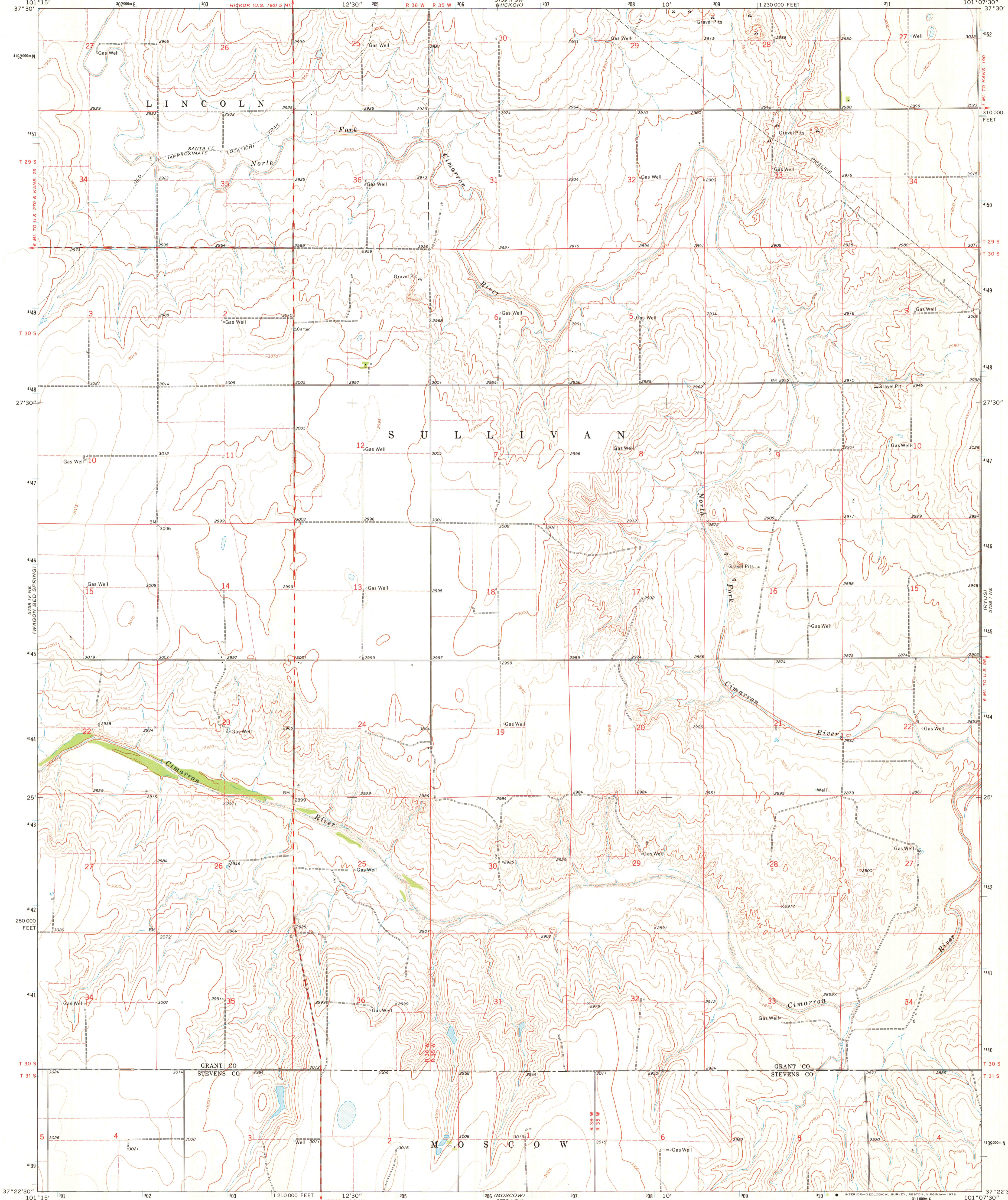


5758 1/4 SE
UL-7-5555

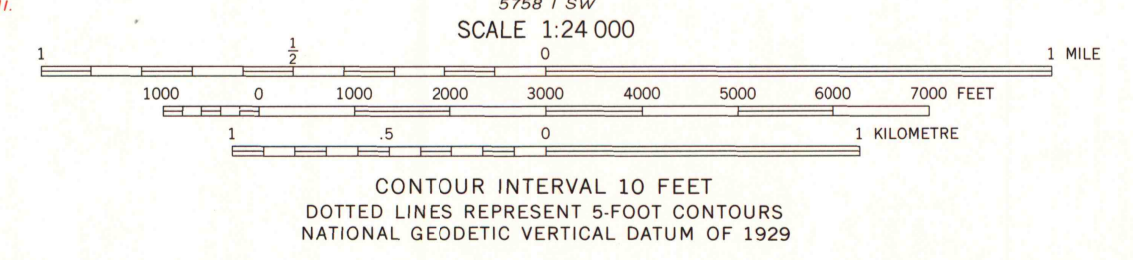
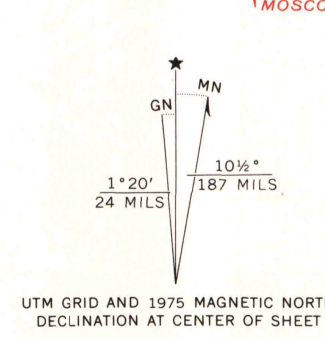
UNITED STATES
DEPARTMENT OF THE INTERIOR
GEOLOGICAL SURVEY

MOSCOW NW QUADRANGLE
KANSAS
7.5 MINUTE SERIES (TOPOGRAPHIC)
NW 1/4 MOSCOW 15' QUADRANGLE

5758 1/4 SE
HICKOK 5E

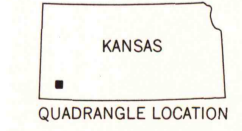


Mapped, edited, and published by the Geological Survey
Control by USGS and NOS/NOAA
Topography by photogrammetric methods from aerial
photographs taken 1972. Field checked 1975
Projection and 10,000-foot grid ticks: Kansas coordinate
system, south zone (Lambert conformal conic)
1000-metre Universal Transverse Mercator grid ticks,
zone 14, shown in blue. 1927 North American datum
Fine red dashed lines indicate selected fence and field lines where
generally visible on aerial photographs. This information is unchecked



ROAD CLASSIFICATION

Primary highway, hard surface	Light-duty road, hard or improved surface
Secondary highway, hard surface	Unimproved road
Interstate Route	U. S. Route
	State Route



MAP AND AIR PHOTO LIBRARY

MOSCOW NW, KANSAS.
NW 1/4 MOSCOW 15' QUADRANGLE
N3722.5-W10107.5/7.5

AUG 17 1976

University of Wisconsin
Madison

1975
AMS 5758 1 NW-SERIES V878

THIS MAP COMPLIES WITH NATIONAL MAP ACCURACY STANDARDS
FOR SALE BY U. S. GEOLOGICAL SURVEY, DENVER, COLORADO 80225, OR RESTON, VIRGINIA 22092
AND STATE GEOLOGICAL SURVEY, LAWRENCE, KANSAS 66044
A FOLDER DESCRIBING TOPOGRAPHIC MAPS AND SYMBOLS IS AVAILABLE ON REQUEST

WAGON BED SPRING SE
5758 1/4 SE

MOSCOW SE
5758 1/4 SE