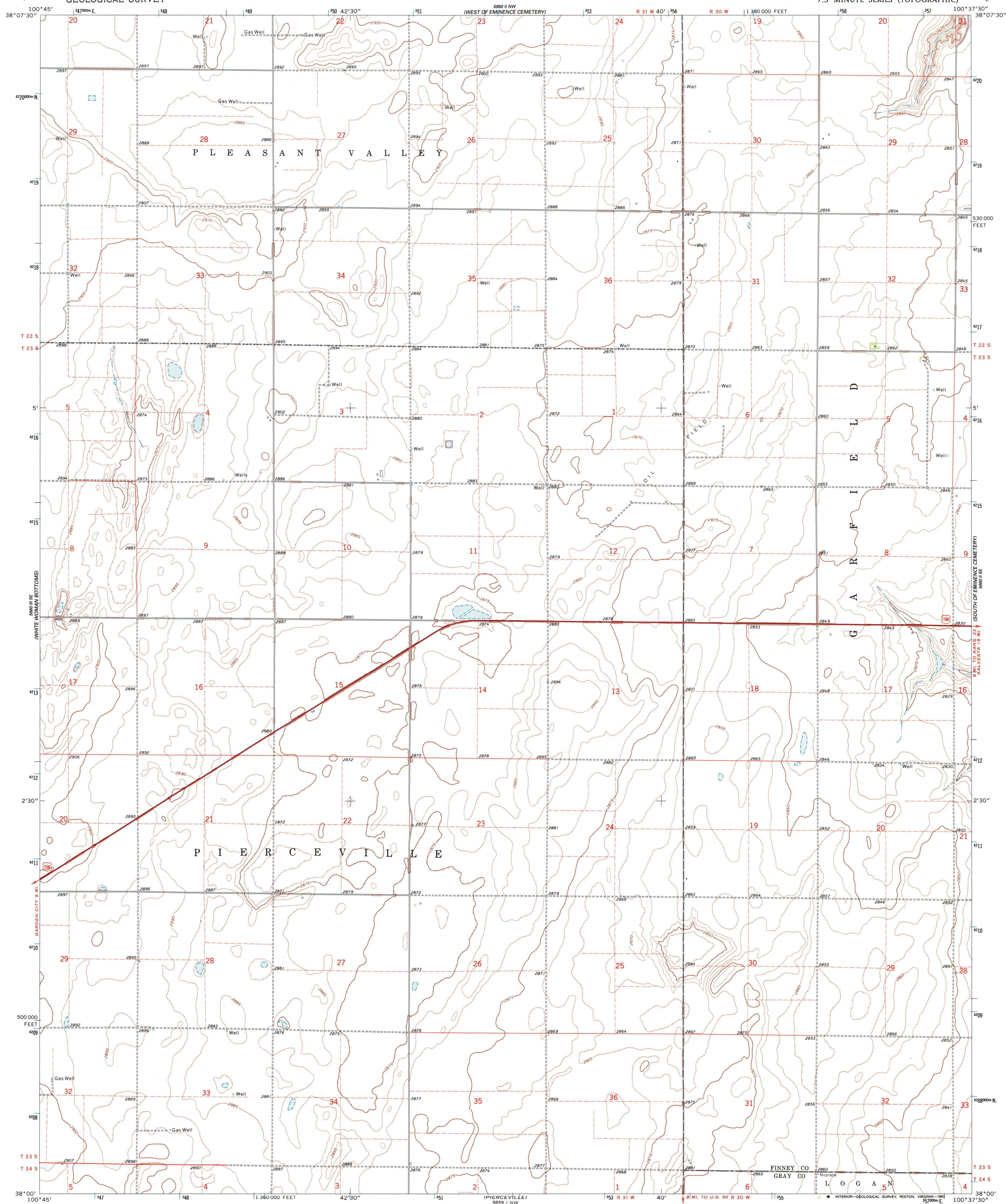


5880 III NE
(TENNIS NE)

5880 III NE
(EMINENCE CEMETERY)

UNITED STATES
DEPARTMENT OF THE INTERIOR
GEOLOGICAL SURVEY

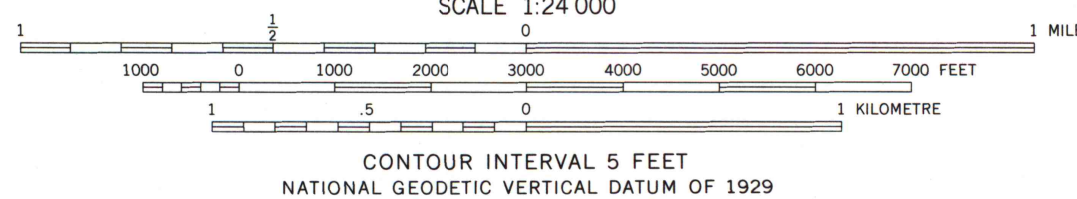
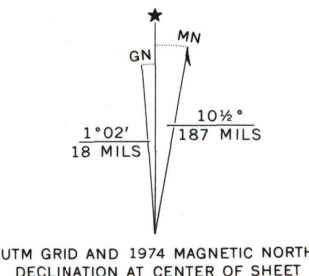
NORTH OF PIERCEVILLE QUADRANGLE
KANSAS
7.5 MINUTE SERIES (TOPOGRAPHIC)



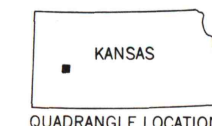
(GARDEN CITY EAST)

(PIERCEVILLE NE)

Mapped, edited, and published by the Geological Survey
Control by USGS and NOS/NOAA
Topography by photogrammetric methods from aerial
photographs taken 1973. Field checked 1974
Projection and 10,000-foot grid ticks: Kansas coordinate
system, south zone (Lambert conformal conic)
1000-metre Universal Transverse Mercator grid ticks,
zone 14, shown in blue. 1927 North American datum
Fine red dashed lines indicate selected fence and field lines where
generally visible on aerial photographs. This information is unchecked



U.S. Regional
Depository Copy
DO NOT DISCARD



ROAD CLASSIFICATION
Primary highway, hard surface
Secondary highway, hard surface
Interstate Route
Light-duty road, hard or improved surface
Unimproved road
U.S. Route
State Route

A.H. ROBINSON
MAP LIBRARY

JUL 18 1994

NORTH OF PIERCEVILLE, KANS.
(FORMERLY SCOTT CITY 4 SW)
38100-A6-TF-024

University of Wisconsin
Madison

1974

DMA 5860 II SW - SERIES V878

THIS MAP COMPLIES WITH NATIONAL MAP ACCURACY STANDARDS
FOR SALE BY U.S. GEOLOGICAL SURVEY, DENVER, COLORADO 80225, OR RESTON, VIRGINIA 22092
AND STATE GEOLOGICAL SURVEY, LAWRENCE, KANSAS 66044
A FOLDER DESCRIBING TOPOGRAPHIC MAPS AND SYMBOLS IS AVAILABLE ON REQUEST