

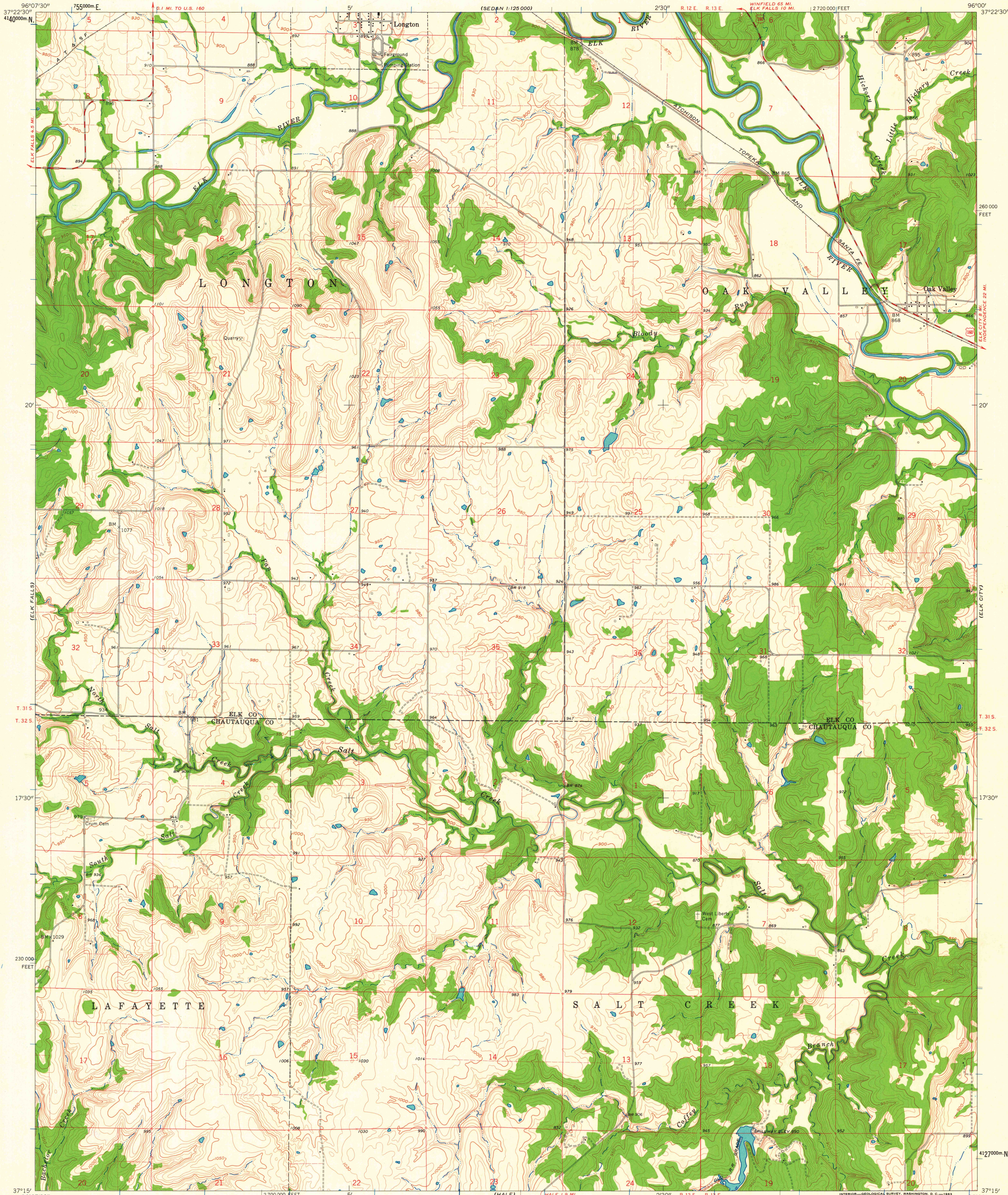
(SEDAN 1:125 000)

UNITED STATES
DEPARTMENT OF THE INTERIOR
GEOLOGICAL SURVEY

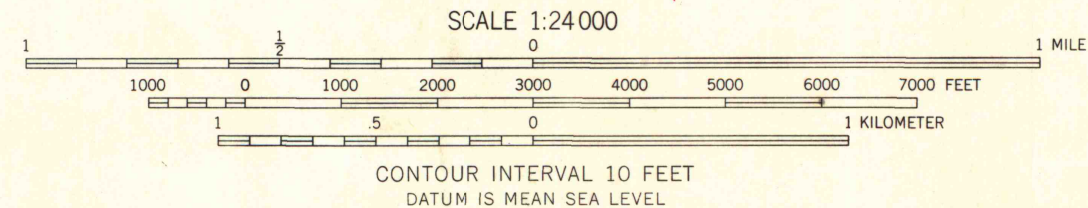
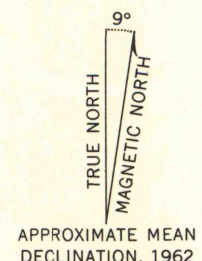
STATE OF KANSAS

OAK VALLEY QUADRANGLE
KANSAS
7.5 MINUTE SERIES (TOPOGRAPHIC)

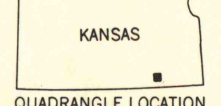
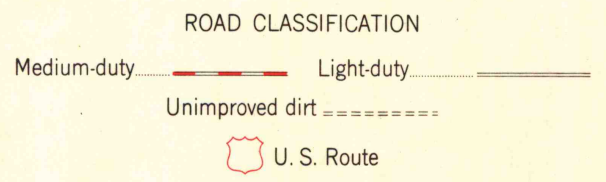
(INDEPENDENCE)



Mapped, edited, and published by the Geological Survey in cooperation with State of Kansas agencies
Control by USGS and USC&GS
Topography by photogrammetric methods from aerial photographs taken 1960. Field checked 1962
Polyconic projection. 1927 North American datum
10,000-foot grid based on Kansas coordinate system, south zone
1000-meter Universal Transverse Mercator grid ticks, zone 14, shown in blue
All wells shown are oil wells
Fine red dashed lines indicate selected fence and field lines where generally visible on aerial photographs. This information is unchecked



MAP AND AIR PHOTO LIBRARY
University of Wisconsin



THIS MAP COMPLIES WITH NATIONAL MAP ACCURACY STANDARDS
FOR SALE BY U.S. GEOLOGICAL SURVEY, DENVER 25, COLORADO OR WASHINGTON 25, D. C.
AND BY THE STATE GEOLOGICAL SURVEY, LAWRENCE, KANSAS
A FOLDER DESCRIBING TOPOGRAPHIC MAPS AND SYMBOLS IS AVAILABLE ON REQUEST

OAK VALLEY, KANS.
N 3715-W 9600/7.5

1962

(CANNEY NW)