

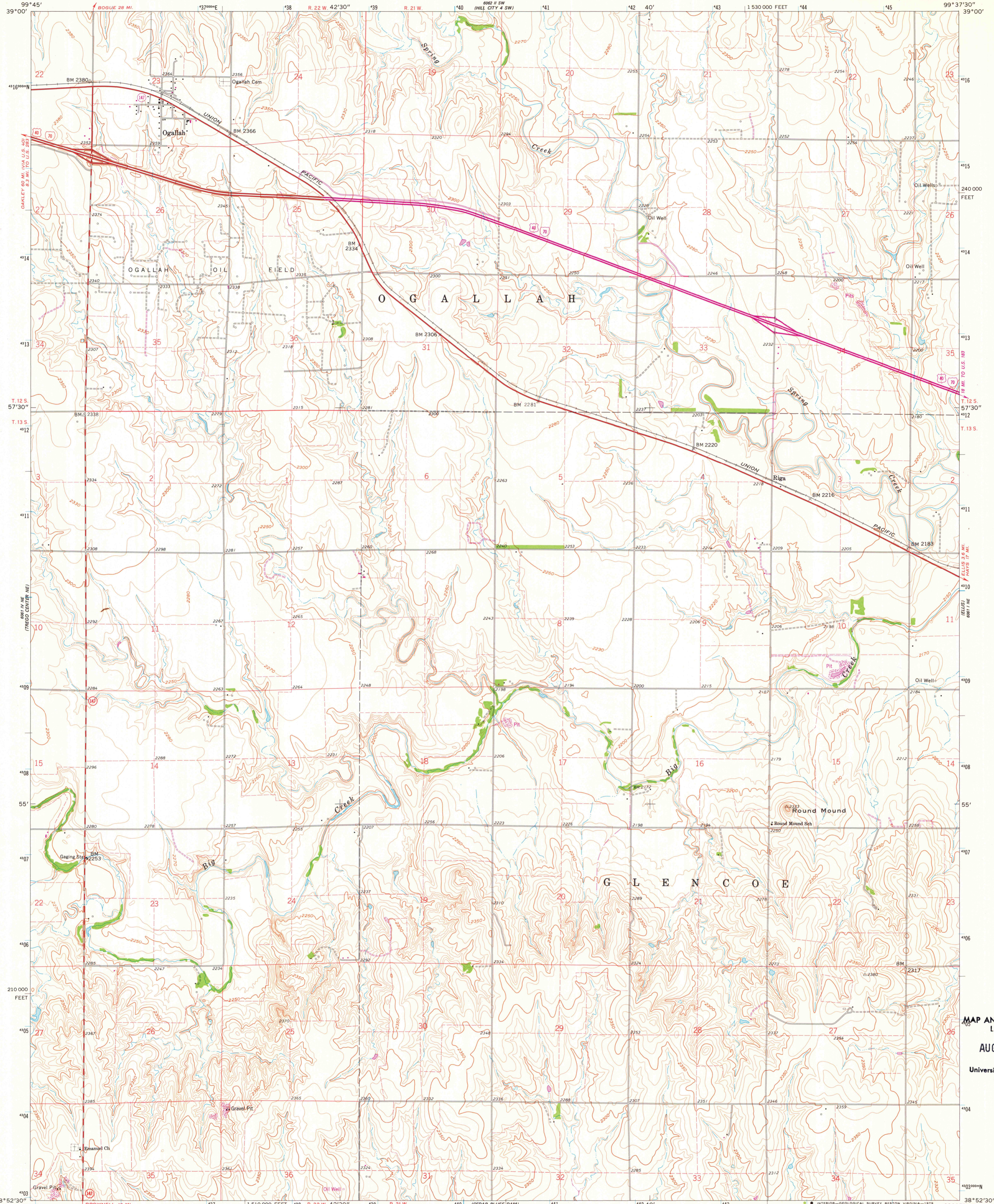
8001 50' 1/4" U.S. 400' U.S. 1/4" TO U.S. 1/4" (M. KERRY 1947)

UNITED STATES DEPARTMENT OF THE INTERIOR GEOLOGICAL SURVEY

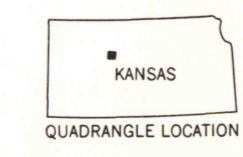
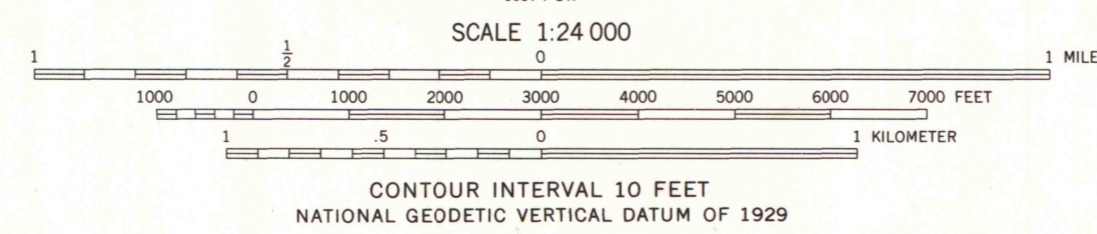
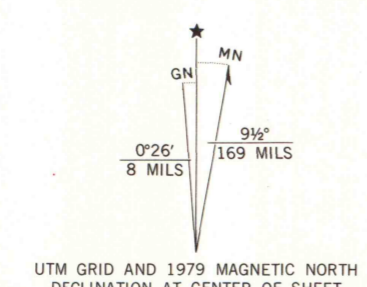


OGALLAH QUADRANGLE KANSAS-TREGO CO. 7.5 MINUTE SERIES (TOPOGRAPHIC)

8001 50' 1/4" U.S. 400' U.S. 1/4" TO U.S. 1/4" (M. KERRY 1947)



Maped, edited, and published by the Geological Survey as part of the Department of the Interior program for the development of the Missouri River Basin Control by USGS and USC&GS. Topography by photogrammetric methods from aerial photographs taken 1959. Field checked 1961. Polyconic projection. 1927 North American datum 10,000-foot grid based on Kansas coordinate system, north zone 1000-meter Universal Transverse Mercator grid ticks, zone 14, shown in blue. Fine red dashed lines indicate selected fence and field lines where generally visible on aerial photographs. This information is unchecked. Revisions shown in purple compiled from aerial photographs taken 1978. Map edited 1979. This information not field checked.



ROAD CLASSIFICATION table with symbols for Heavy-duty, Medium-duty, Light-duty, and Unimproved dirt roads, as well as Interstate, U.S., and State routes.

THIS MAP COMPLIES WITH NATIONAL MAP ACCURACY STANDARDS FOR SALE BY U. S. GEOLOGICAL SURVEY, DENVER, COLORADO 80225, OR RESTON, VIRGINIA 22092 AND STATE GEOLOGICAL SURVEY, LAWRENCE, KANSAS 66044. A FOLDER DESCRIBING TOPOGRAPHIC MAPS AND SYMBOLS IS AVAILABLE ON REQUEST.

OGALLAH, KANS. N3852.5-W9937.57.5 1961 PHOTOREVISED 1979 DMA 6061 1 NW-SERIES V878

MAP AND AIR PHOTO LIBRARY AUG 21 1979 University of Wisconsin Madison