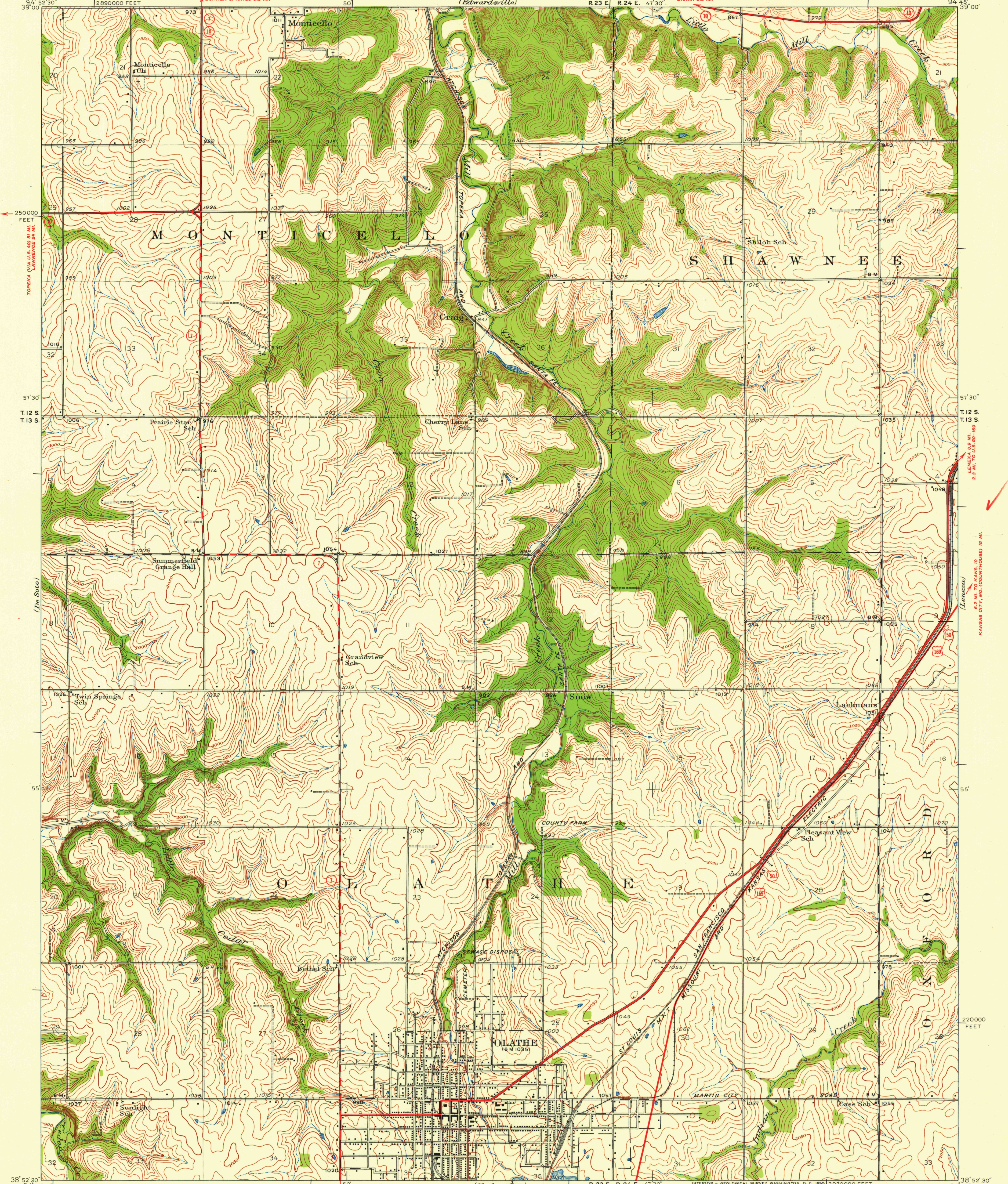


UNITED STATES
DEPARTMENT OF THE INTERIOR
GEOLOGICAL SURVEY

KANSAS CITY, MO. (COURTHOUSE) 13 MI.
SHAWNEE 3.5 MI.
KANSAS
(JOHNSON COUNTY)
OLATHE QUADRANGLE
7.5-MINUTE SERIES



Topography by M. J. Harden, S. D. Farmer,
J. M. Holmes, D. E. Crangle, and F. H. Nelson
Surveyed in 1935

TRUE NORTH
MAGNETIC NORTH
APPROXIMATE MEAN
DECLINATION, 1935

SCALE 1:24000
1000 0 1000 2000 3000 4000 5000 6000 7000 FEET
1 KILOMETER

INTERIOR - GEOLOGICAL SURVEY, WASHINGTON, D. C. 1955
POLYCONIC PROJECTION, 1927 NORTH AMERICAN DATUM
10000 FOOT GRID BASED ON KANSAS (NORTH)
RECTANGULAR COORDINATE SYSTEM

ROAD CLASSIFICATION
Heavy-duty 4 LANE 16 LANE Light-duty
Medium-duty 4 LANE 16 LANE Unimproved dirt
U. S. Route State Route

Contour interval 10 feet
Datum is mean sea level
FOR SALE BY U.S. GEOLOGICAL SURVEY, FEDERAL CENTER, DENVER, COLORADO OR WASHINGTON 25, D. C.
AND BY THE STATE GEOLOGICAL SURVEY, LAWRENCE, KANSAS
A FOLDER DESCRIBING TOPOGRAPHIC MAPS AND SYMBOLS IS AVAILABLE ON REQUEST

FILE COPY
JUN 15 1955
MAP INFORMATION OFFICE
GEOLOGICAL SURVEY

OLATHE, KANS.
N3852.5-W9445.7/5
1935

USGS
Historical File
Topographic Division

Scale
Conversion