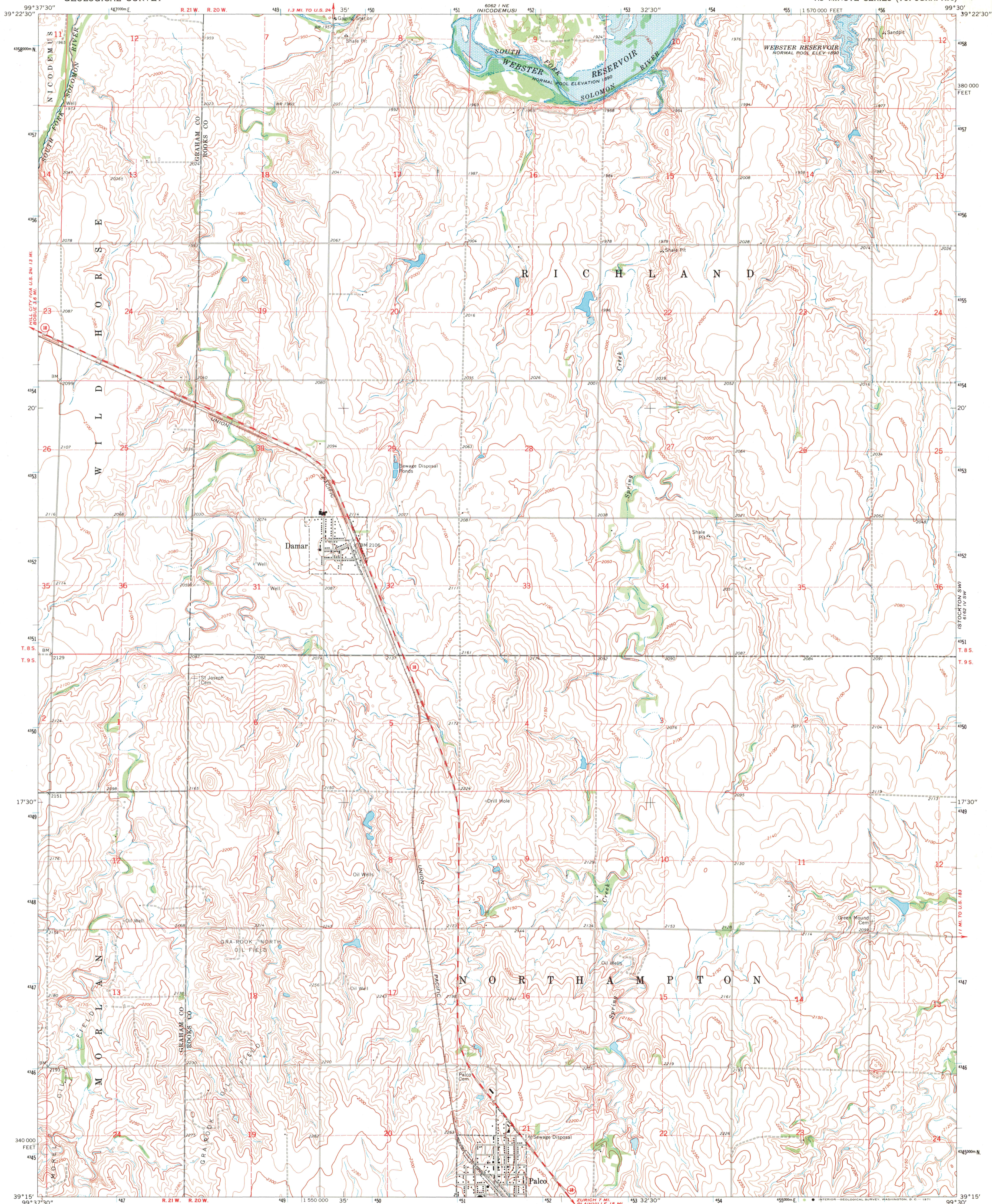
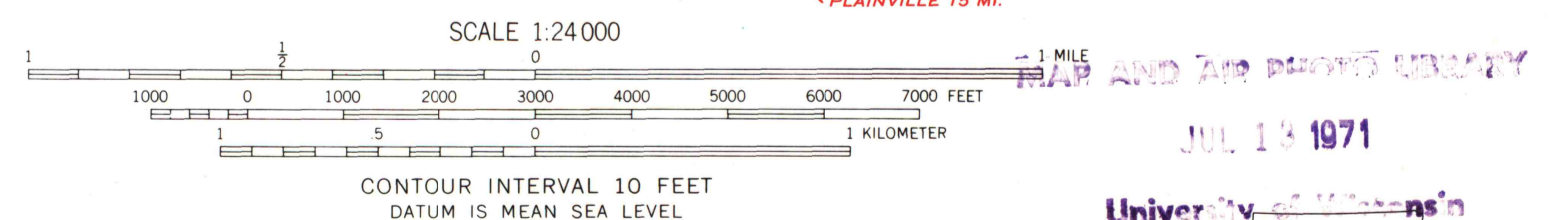
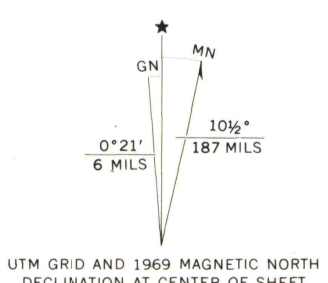


1/2 MI. TO U.S. 13 MI.
WEBSTER DAM



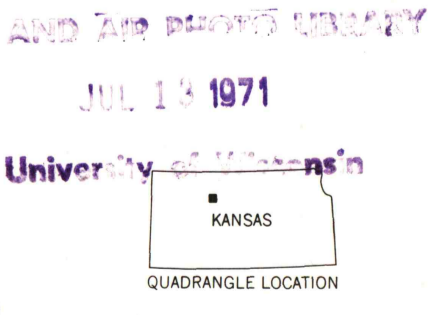
Mapped, edited, and published by the Geological Survey as part of the Department of the Interior program for the development of the Missouri River Basin. Control by USGS and USC&GS. Topography by photogrammetric methods from aerial photographs taken 1967-68. Field checked 1969. Polyconic projection. 1927 North American datum. 10,000-foot grid based on Kansas coordinate system, north zone 1000-meter Universal Transverse Mercator grid ticks, zone 14, shown in blue. Areas covered by dashed light-blue pattern are subject to controlled inundation. Fine red dashed lines indicate selected fence and field lines where generally visible on aerial photographs. This information is unchecked.



ROAD CLASSIFICATION

Secondary highway, all weather, hard surface	Light-duty road, all weather, improved surface
Unimproved road, fair or dry weather	State Route

THIS MAP COMPLIES WITH NATIONAL MAP ACCURACY STANDARDS FOR SALE BY U.S. GEOLOGICAL SURVEY, DENVER, COLORADO 80225, OR WASHINGTON, D. C. 20242 AND BY THE STATE GEOLOGICAL SURVEY, LAWRENCE, KANSAS 66044. A FOLDER DESCRIBING TOPOGRAPHIC MAPS AND SYMBOLS IS AVAILABLE ON REQUEST.



PALCO, KANSAS.
N3915-W9930/7.5
1969
AMS 6062 I SE-SERIES V878