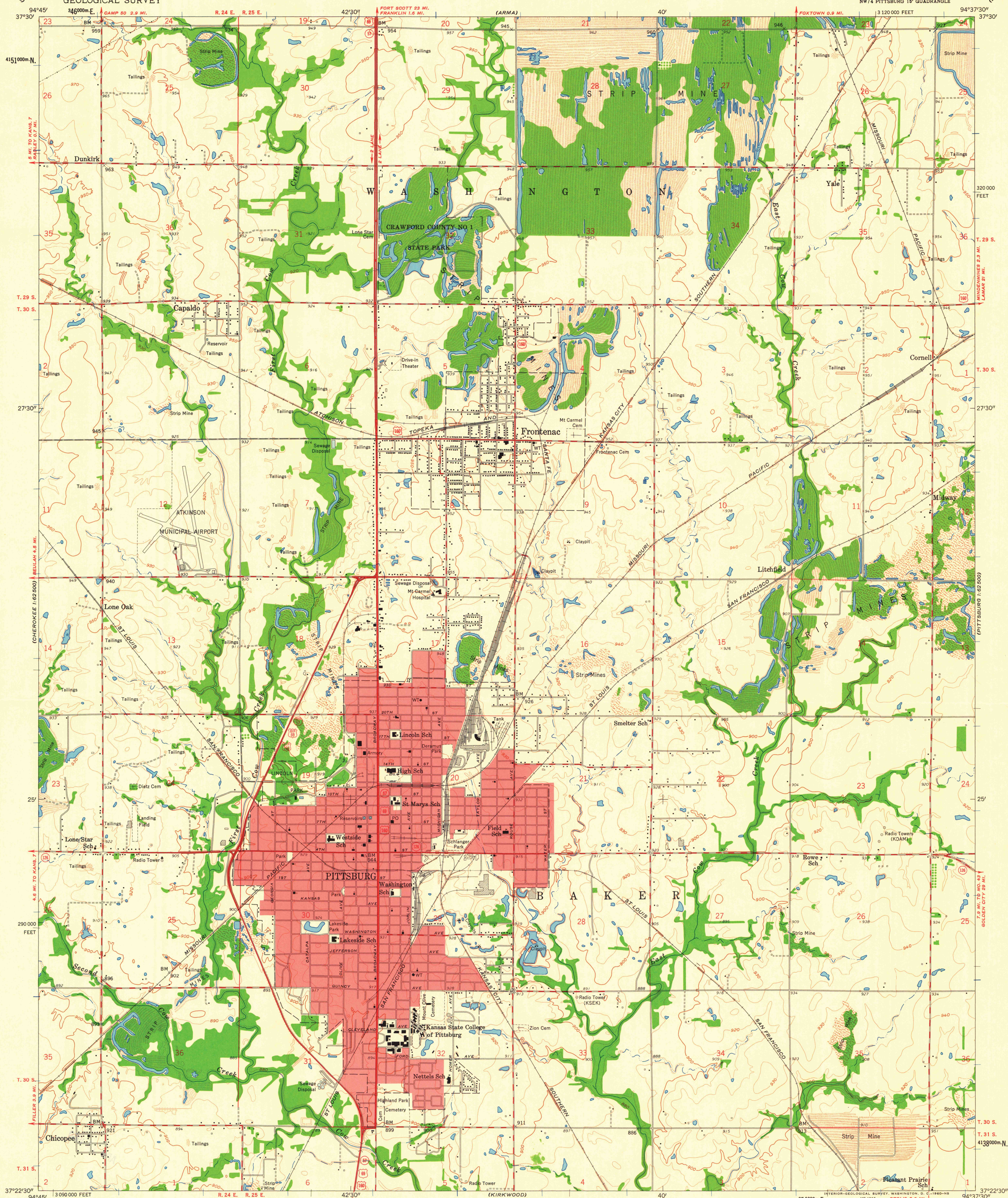


UNITED STATES
DEPARTMENT OF THE INTERIOR
GEOLOGICAL SURVEY

STATE OF KANSAS

PITTSBURG QUADRANGLE
KANSAS—CRAWFORD CO.
7.5 MINUTE SERIES (TOPOGRAPHIC)
NW 1/4 PITTSBURG 15' QUADRANGLE



Maped, edited, and published by the Geological Survey
in cooperation with State of Kansas agencies

Control by USGS and USC&GS

Topography from aerial photographs by photogrammetric methods
Aerial photographs taken 1958. Field check 1959

Polyconic projection. 1927 North American datum
10,000-foot grid based on Kansas coordinate system, south zone
1000-meter Universal Transverse Mercator grid ticks,
zone 15, shown in blue

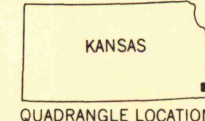
Red tint indicates areas in which only
landmark buildings are shown

TRUE NORTH
MAGNETIC NORTH
APPROXIMATE MEAN
DECLINATION, 1959

SCALE 1:24,000
1 MILE
1 KILOMETER
CONTOUR INTERVAL 10 FEET
DATUM IS MEAN SEA LEVEL

THIS MAP COMPLIES WITH NATIONAL MAP ACCURACY STANDARDS
FOR SALE BY U. S. GEOLOGICAL SURVEY, DENVER 25, COLORADO OR WASHINGTON 25, D. C.
AND BY THE STATE GEOLOGICAL SURVEY, LAWRENCE, KANSAS
A FOLDER DESCRIBING TOPOGRAPHIC MAPS AND SYMBOLS IS AVAILABLE ON REQUEST

ROAD CLASSIFICATION
Heavy-duty ——— Light-duty ———
Medium-duty ——— Unimproved dirt ———
U. S. Route ——— State Route ———



PITTSBURG, KANS.
NW 1/4 PITTSBURG 15' QUADRANGLE
N 3722.5—W 9437.5/7.5

MAP AND AIR PHOTO LIBRARY
University of Wisconsin

1959