

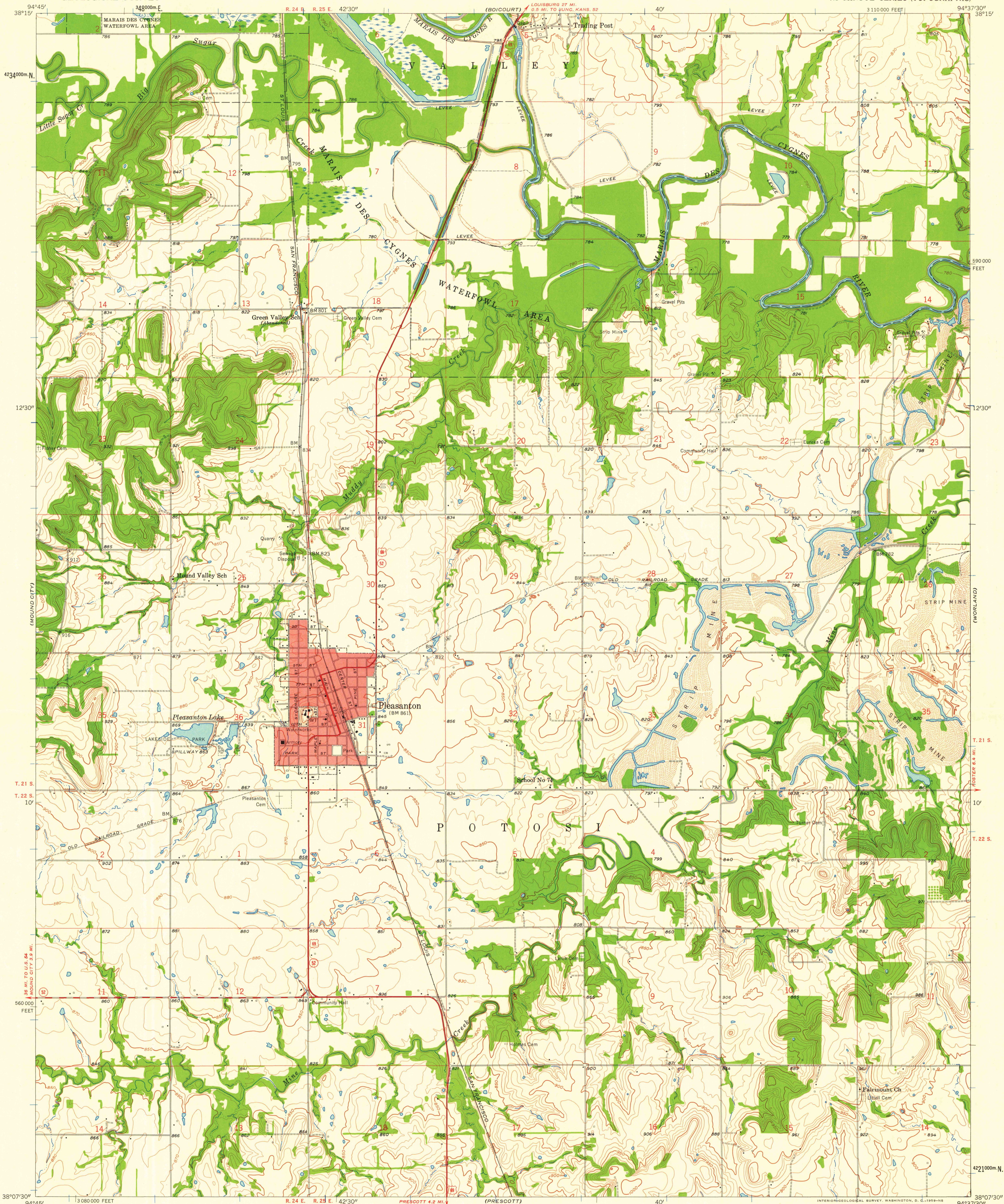
(LA CYGNET)

UNITED STATES  
DEPARTMENT OF THE INTERIOR  
GEOLOGICAL SURVEY

STATE OF KANSAS

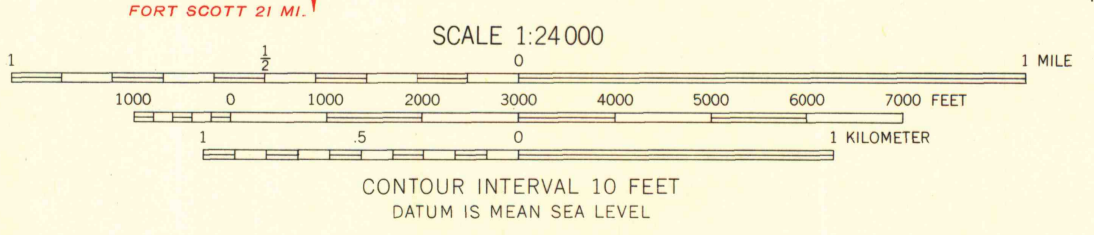
PLEASANTON QUADRANGLE  
KANSAS—LINN CO.  
7.5 MINUTE SERIES (TOPOGRAPHIC)

(ROUND CITY 1:250,000)



Mapped, edited, and published by the Geological Survey  
in cooperation with State of Kansas agencies  
Control by USGS and USC&GS  
Topography from aerial photographs by Kelsch plottor  
Aerial photographs taken 1957. Field check 1958  
Polyconic projection. 1927 North American datum  
100,000-foot grid based on Kansas coordinate system, south zone  
1000-meter Universal Transverse Mercator grid ticks,  
zone 15, shown in blue  
Red tint indicates area in which only  
landmark buildings are shown

TRUE NORTH  
MAGNETIC NORTH  
APPROXIMATE MEAN  
DECLINATION, 1958



SCALE 1:24000  
CONTOUR INTERVAL 10 FEET  
DATUM IS MEAN SEA LEVEL  
THIS MAP COMPLIES WITH NATIONAL MAP ACCURACY STANDARDS  
FOR SALE BY U. S. GEOLOGICAL SURVEY, DENVER 2, COLORADO OR WASHINGTON 25, D. C.  
AND BY THE STATE GEOLOGICAL SURVEY, LAWRENCE, KANSAS  
A FOLDER DESCRIBING TOPOGRAPHIC MAPS AND SYMBOLS IS AVAILABLE ON REQUEST

ROAD CLASSIFICATION  
Heavy-duty ——— Light-duty ———  
Medium-duty ——— Unimproved dirt ———  
U.S. Route (red shield) State Route (white circle)

PLEASANTON, KANS.  
N3807.5—W9437.5/7.5  
1958

MAP AND AIR PHOTO LIBRARY  
University of Wisconsin