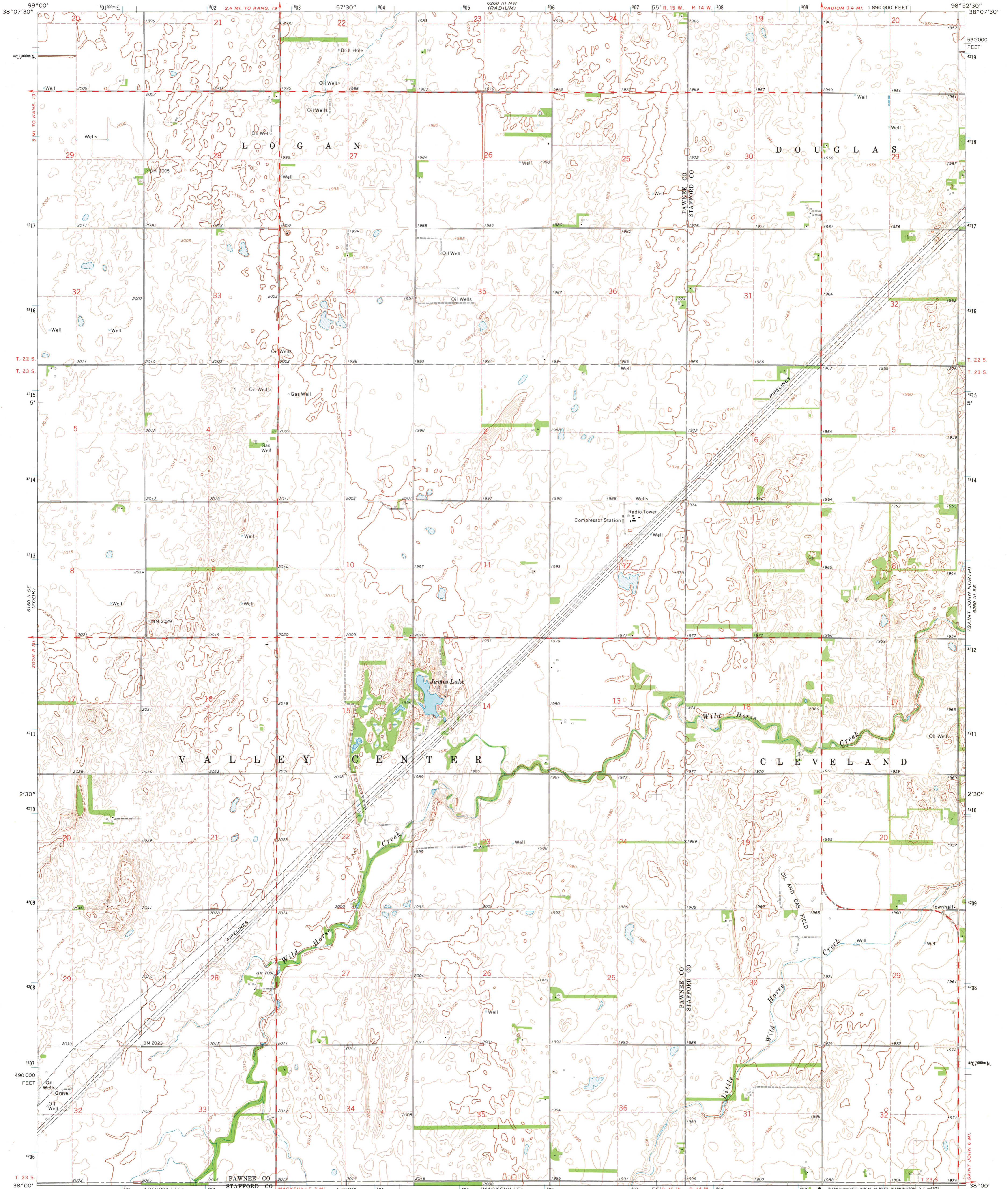


6860 III NE (EASTWARD)

6860 III NE (EASTWARD)

UNITED STATES DEPARTMENT OF THE INTERIOR GEOLOGICAL SURVEY

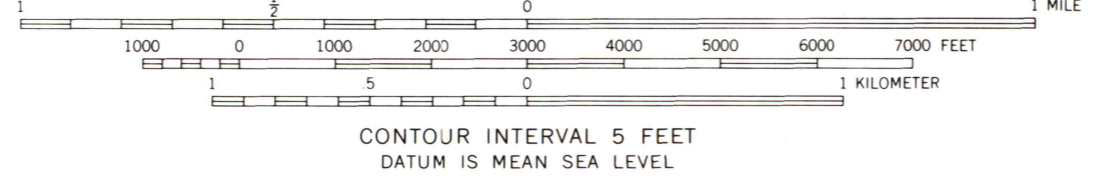
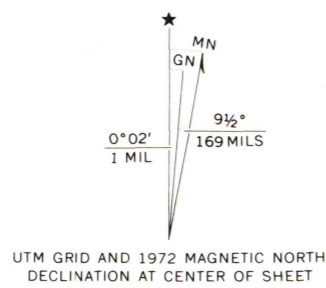
SAINT JOHN SW QUADRANGLE KANSAS 7.5 MINUTE SERIES (TOPOGRAPHIC)



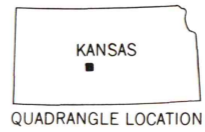
6860 III NE (EASTWARD)

6860 III NE (EASTWARD)

Mapped, edited, and published by the Geological Survey Control by USGS and USC&GS Topography by photogrammetric methods from aerial photographs taken 1970. Field checked 1972 Projection and 10,000-foot grid ticks: Kansas coordinate system, south zone (Lambert conformal conic) 1000-meter Universal Transverse Mercator grid ticks, zone 14, shown in blue. 1927 North American datum Fine red dashed lines indicate selected fence and field lines where generally visible on aerial photographs. This information is unchecked



ROAD CLASSIFICATION table with symbols for primary, secondary, and light-duty roads, and symbols for interstate, U.S., and state routes.



MAP AND AIR PHOTO LIBRARY JUN 28 1974 University of Wisconsin

THIS MAP COMPLIES WITH NATIONAL MAP ACCURACY STANDARDS FOR SALE BY U.S. GEOLOGICAL SURVEY, DENVER, COLORADO 80225 OR WASHINGTON, D.C. 20242 AND BY THE STATE GEOLOGICAL SURVEY, LAWRENCE, KANSAS 66044 A FOLDER DESCRIBING TOPOGRAPHIC MAPS AND SYMBOLS IS AVAILABLE ON REQUEST

SAINT JOHN SW, KANS. N3800-W9852.5/7.5 1972 AMS 6280 III SW-SERIES V878

6860 III NE (EASTWARD)

6860 III NE (EASTWARD)