

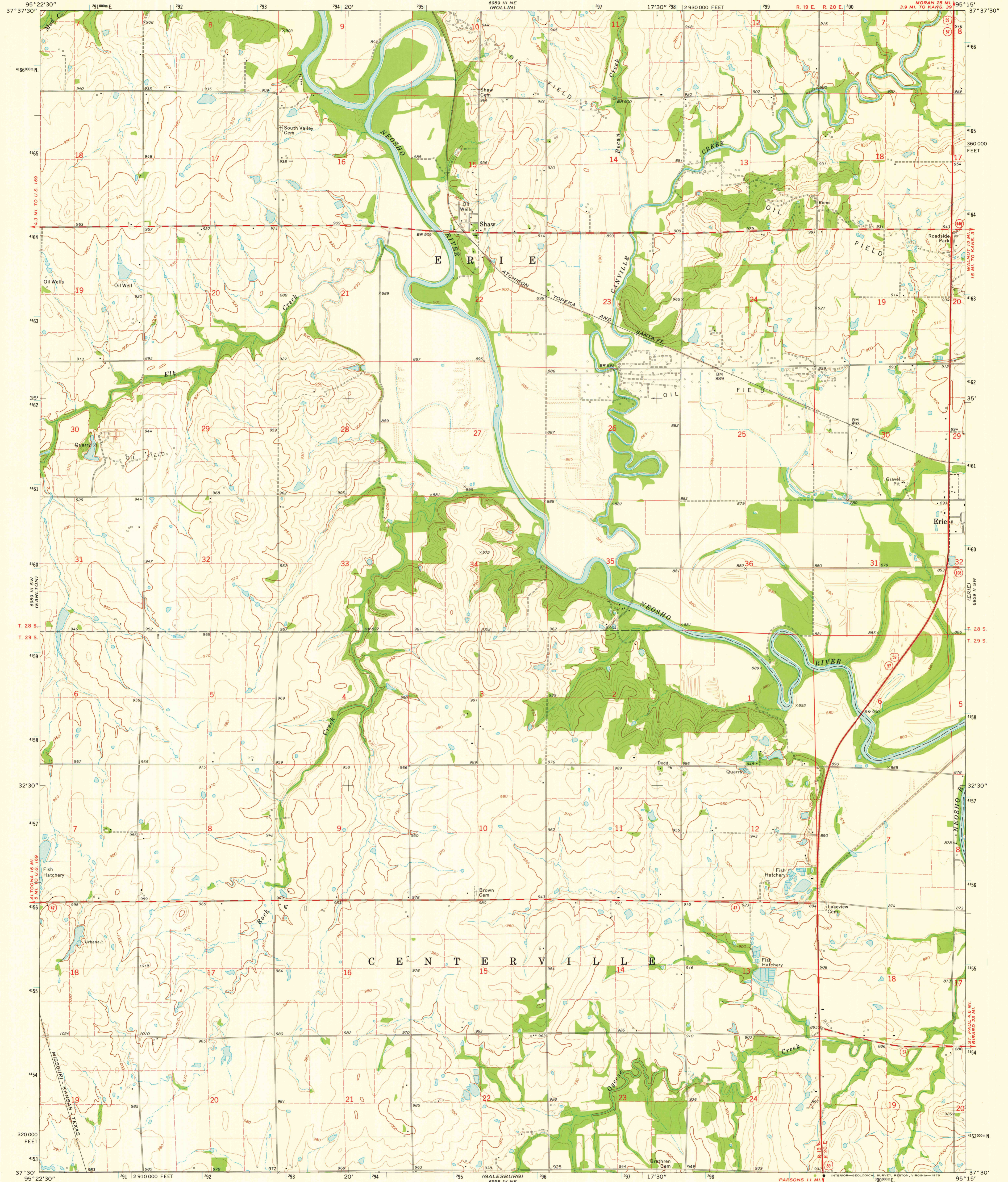
6959 III SE
CANNONVILLE

UNITED STATES
DEPARTMENT OF THE INTERIOR
GEOLOGICAL SURVEY

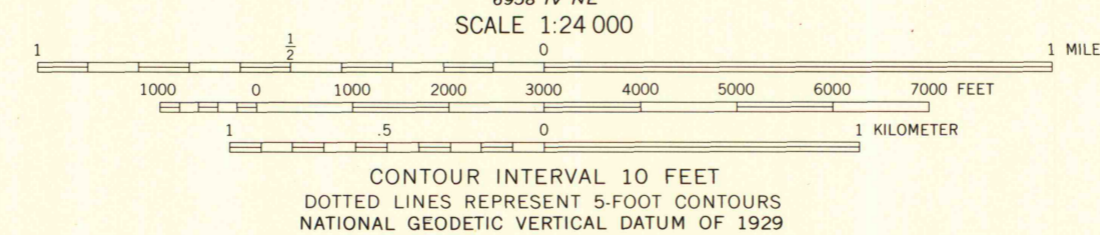
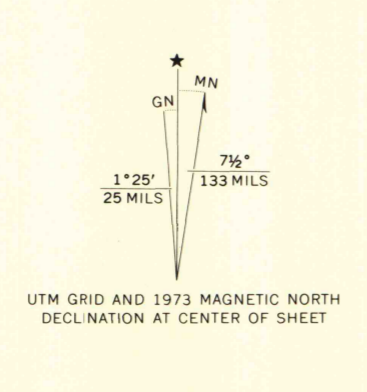
STATE OF KANSAS

SHAW QUADRANGLE
KANSAS—NEOSHO CO.
7.5 MINUTE SERIES (TOPOGRAPHIC)

6959 III NW
ST. ARMY



Mapped, edited, and published by the Geological Survey
in cooperation with State of Kansas agencies
Control by USGS and USC&GS
Topography by photogrammetric methods from aerial
photographs taken 1972-73. Field checked 1973
Projection and 10,000-foot grid ticks: Kansas coordinate
system, south zone (Lambert conformal conic)
1000-meter Universal Transverse Mercator grid ticks,
zone 15, shown in blue. 1927 North American datum
Fine red dashed lines indicate selected fence and field lines where
generally visible on aerial photographs. This information is unchecked



ROAD CLASSIFICATION

Primary highway, hard surface	Light-duty road, hard or improved surface
Secondary highway, hard surface	Unimproved road

Interstate Route U.S. Route State Route

THIS MAP COMPLIES WITH NATIONAL MAP ACCURACY STANDARDS
FOR SALE BY U.S. GEOLOGICAL SURVEY, DENVER, COLORADO 80225, OR RESTON, VIRGINIA 22092
AND BY THE STATE GEOLOGICAL SURVEY, LAWRENCE, KANSAS 66044
A FOLDER DESCRIBING TOPOGRAPHIC MAPS AND SYMBOLS IS AVAILABLE ON REQUEST

MAP AND AIR PHOTO LIBRARY
SHAW, KANS.
SE/4 CHANUTE 15' QUADRANGLE
N3730-W9515/7.5
MAY 20 1975
1973
AMS 6959 III SE—SERIES V878