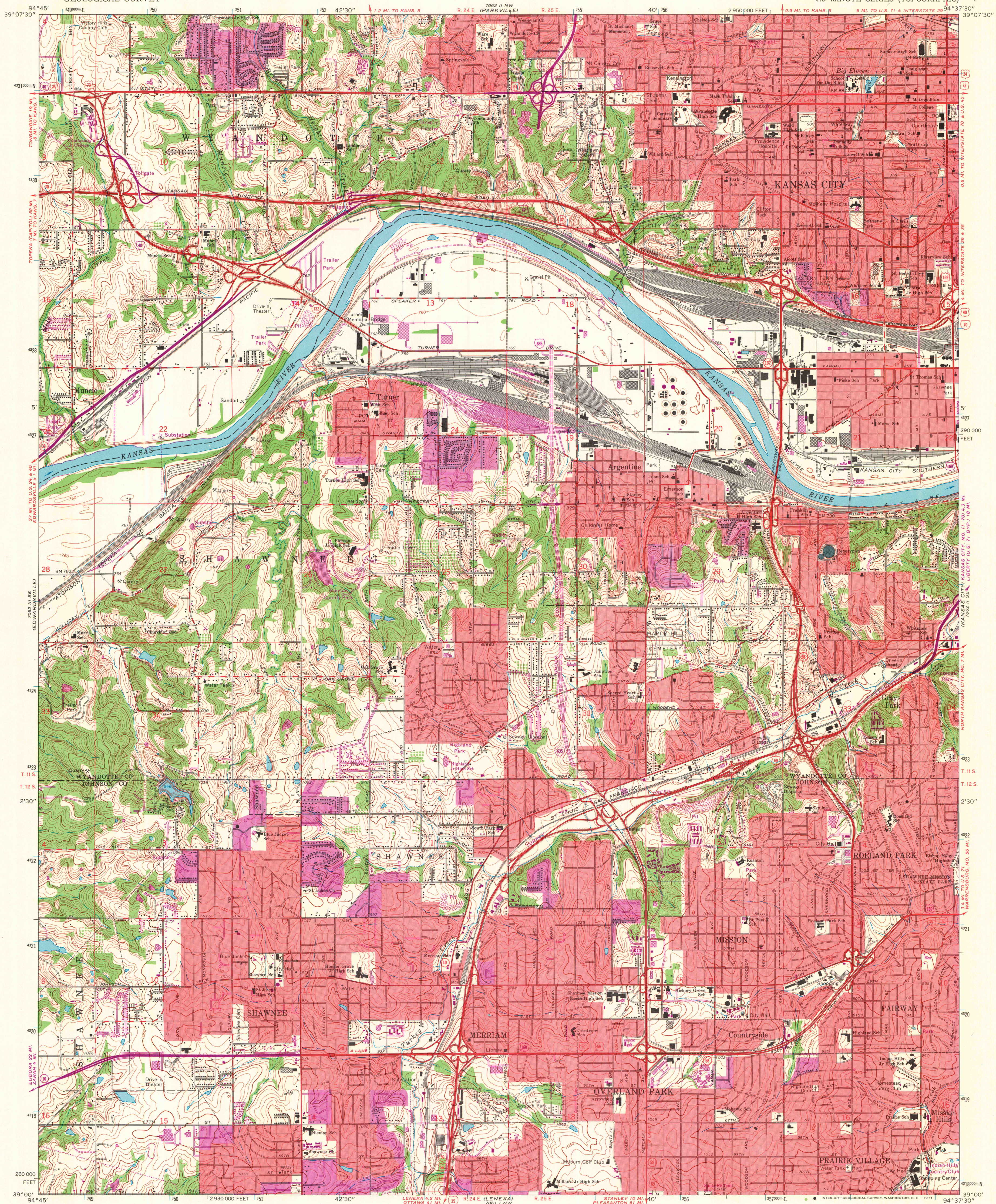


7000 11 NE
7000 11 NE
7000 11 NE

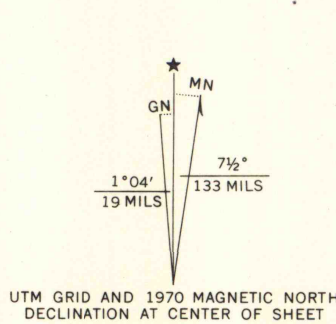
UNITED STATES
DEPARTMENT OF THE INTERIOR
GEOLOGICAL SURVEY

SHAWNEE QUADRANGLE
KANSAS
7.5 MINUTE SERIES (TOPOGRAPHIC)

7000 11 NE
7000 11 NE
7000 11 NE



Mapped, edited, and published by the Geological Survey
Control by USGS and USC&GS
Planimetry by photogrammetric methods from aerial photographs taken 1955. Topography by planimetric surveys 1933-34. Revised 1964
Polyconic projection. 1927 North American datum
10,000-foot grid based on Kansas coordinate system, north zone
1000-meter Universal Transverse Mercator grid ticks, zone 15, shown in blue
Red tint indicates areas in which only landmark buildings are shown
Revisions shown in purple compiled from aerial photographs taken 1970. This information not field checked
Purple tint indicates extension of urban areas



SCALE 1:24,000
CONTOUR INTERVAL 10 FEET
DATUM IS MEAN SEA LEVEL
THIS MAP COMPLIES WITH NATIONAL MAP ACCURACY STANDARDS
FOR SALE BY U.S. GEOLOGICAL SURVEY, DENVER, COLORADO 80225, OR WASHINGTON, D.C. 20242
AND BY THE STATE GEOLOGICAL SURVEY, LAWRENCE, KANSAS 66044
A FOLDER DESCRIBING TOPOGRAPHIC MAPS AND SYMBOLS IS AVAILABLE ON REQUEST

ROAD CLASSIFICATION
Heavy-duty ——— Light-duty ———
Medium-duty ——— Unimproved dirt ———
Interstate Route ——— U.S. Route ——— State Route ———
MAP AND AIR PHOTO
LIBRARY
DEC 3 - 1971
SHAWNEE, KANS.
N3900-W9437.5/7.5
1964
PHOTOREVISED 1970
AMS 7062 II SW-SERIES V878

7000 11 NE
7000 11 NE
7000 11 NE