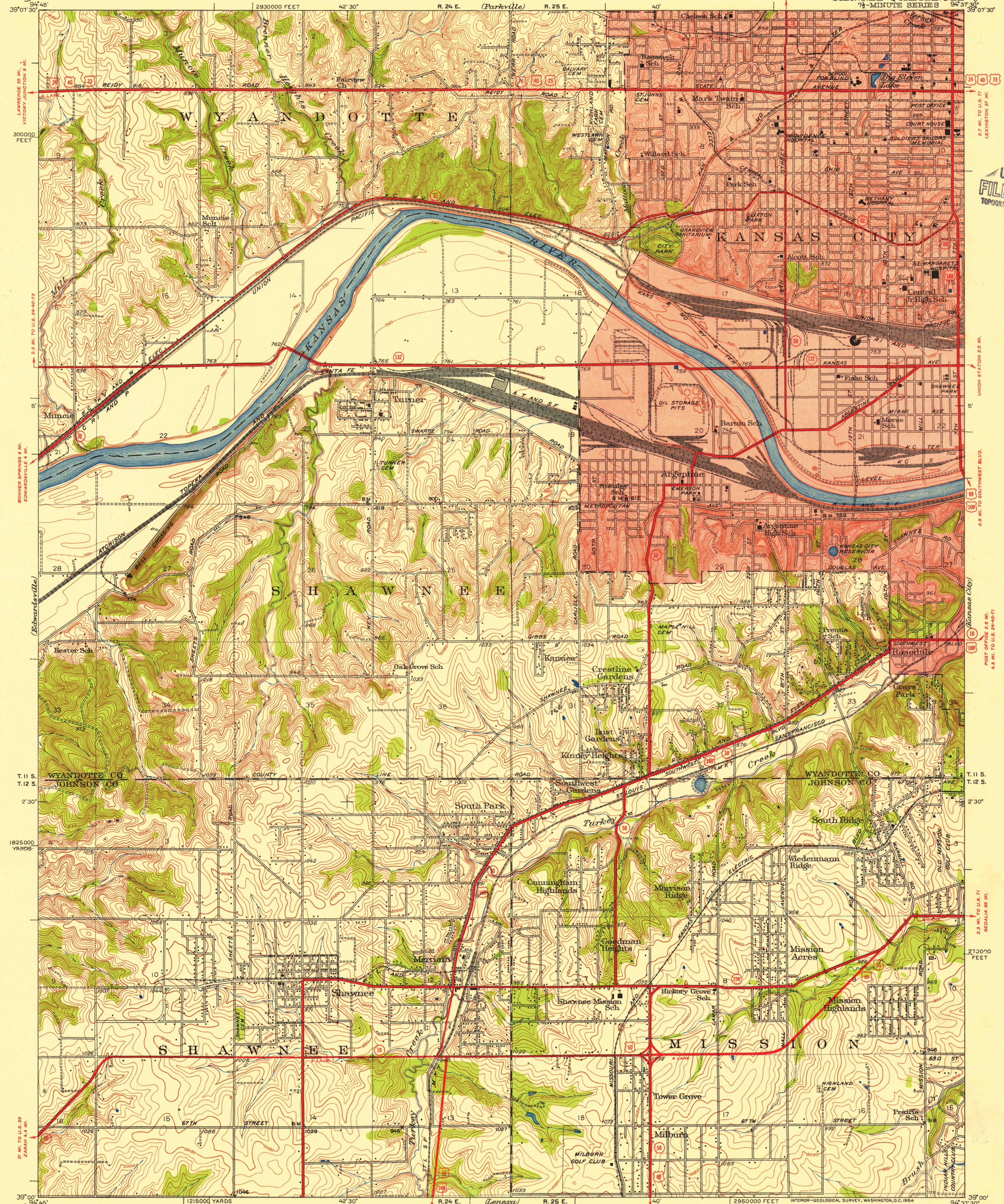


UNITED STATES  
DEPARTMENT OF THE INTERIOR  
GEOLOGICAL SURVEY

KANSAS  
SHAWNEE QUADRANGLE  
7 1/2-MINUTE SERIES



Topography by C. A. Killian, J. M. Patterson,  
L. V. Johnson, Frank H. Nelson, R. E. Bending,  
and C. C. Addison  
Surveyed in 1933 and 1934  
Red tint indicates areas in which only  
landmark buildings are shown

APPROXIMATE MEAN  
MAGNETIC NORTH

FOR SALE BY U.S. GEOLOGICAL SURVEY, FEDERAL CENTER, DENVER, COLORADO OR WASHINGTON 25, D.C.  
AND BY THE STATE GEOLOGICAL SURVEY, LAWRENCE, KANSAS  
A FOLDER DESCRIBING TOPOGRAPHIC MAPS AND SYMBOLS IS AVAILABLE ON REQUEST

ROAD CLASSIFICATION  
Heavy-duty — 4 LANE 16 LANE Light-duty —  
Medium-duty — 4 LANE 16 LANE Unimproved dirt —  
U. S. Route — State Route

Polyconic projection, 1927 North American datum  
5000 yard grid based on U.S. zone system, D  
10000 foot grid based on Kansas (North)  
rectangular coordinate system

SHAWNEE, KANS.  
N3900-W9437.5

1934

USGS  
Historical File  
Topographic Division  
FILE COPY

OCT 4 195