

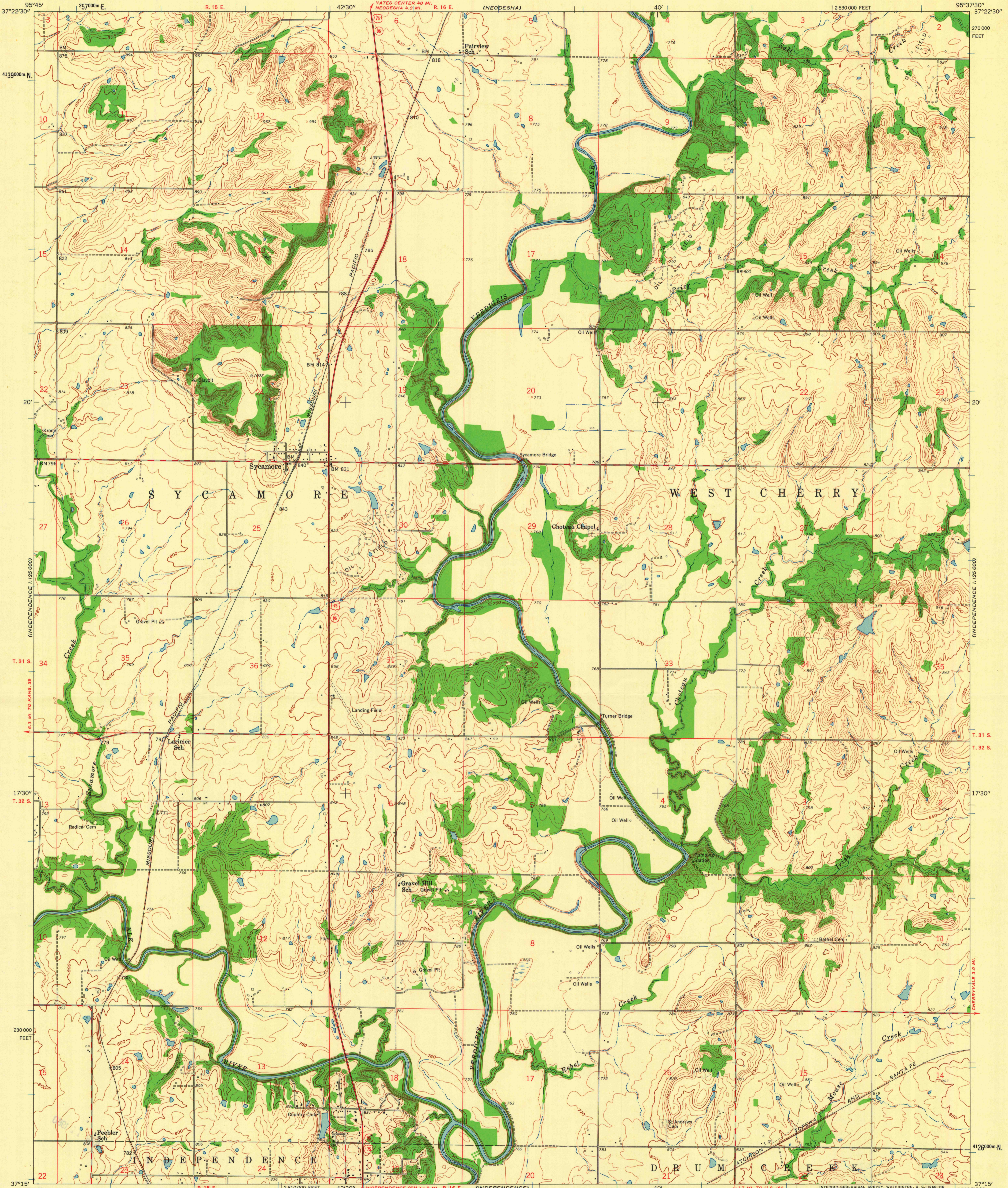
(INDEPENDENCE)
1:125,000

(INDEPENDENCE)
1:125,000

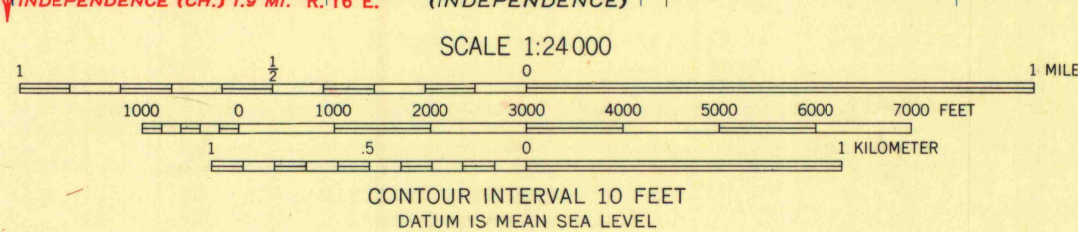
UNITED STATES
DEPARTMENT OF THE INTERIOR
GEOLOGICAL SURVEY

STATE OF KANSAS

SYCAMORE QUADRANGLE
KANSAS—MONTGOMERY CO.
7.5 MINUTE SERIES (TOPOGRAPHIC)

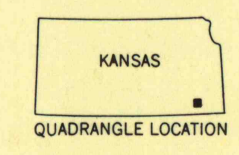


Mapped, edited, and published by the Geological Survey in cooperation with State of Kansas agencies
Control by USGS and USC&GS
Topography from aerial photographs by photogrammetric methods
Aerial photographs taken 1958. Field check 1959
Polyconic projection. 1927 North American datum
10,000-foot grid based on Kansas coordinate system, south zone
1000-meter Universal Transverse Mercator grid ticks, zone 15, shown in blue



ROAD CLASSIFICATION

Heavy-duty	Light-duty
Medium-duty	Unimproved dirt
U. S. Route	State Route



THIS MAP COMPLIES WITH NATIONAL MAP ACCURACY STANDARDS
FOR SALE BY U. S. GEOLOGICAL SURVEY, DENVER 25, COLORADO OR WASHINGTON 25, D. C.
AND BY THE STATE GEOLOGICAL SURVEY, LAWRENCE, KANSAS
A FOLDER DESCRIBING TOPOGRAPHIC MAPS AND SYMBOLS IS AVAILABLE ON REQUEST

SYCAMORE, KANS.
N 3715—W 9537.5/7.5

MAP AND AIR PHOTO LIBRARY
University of Wisconsin

1959