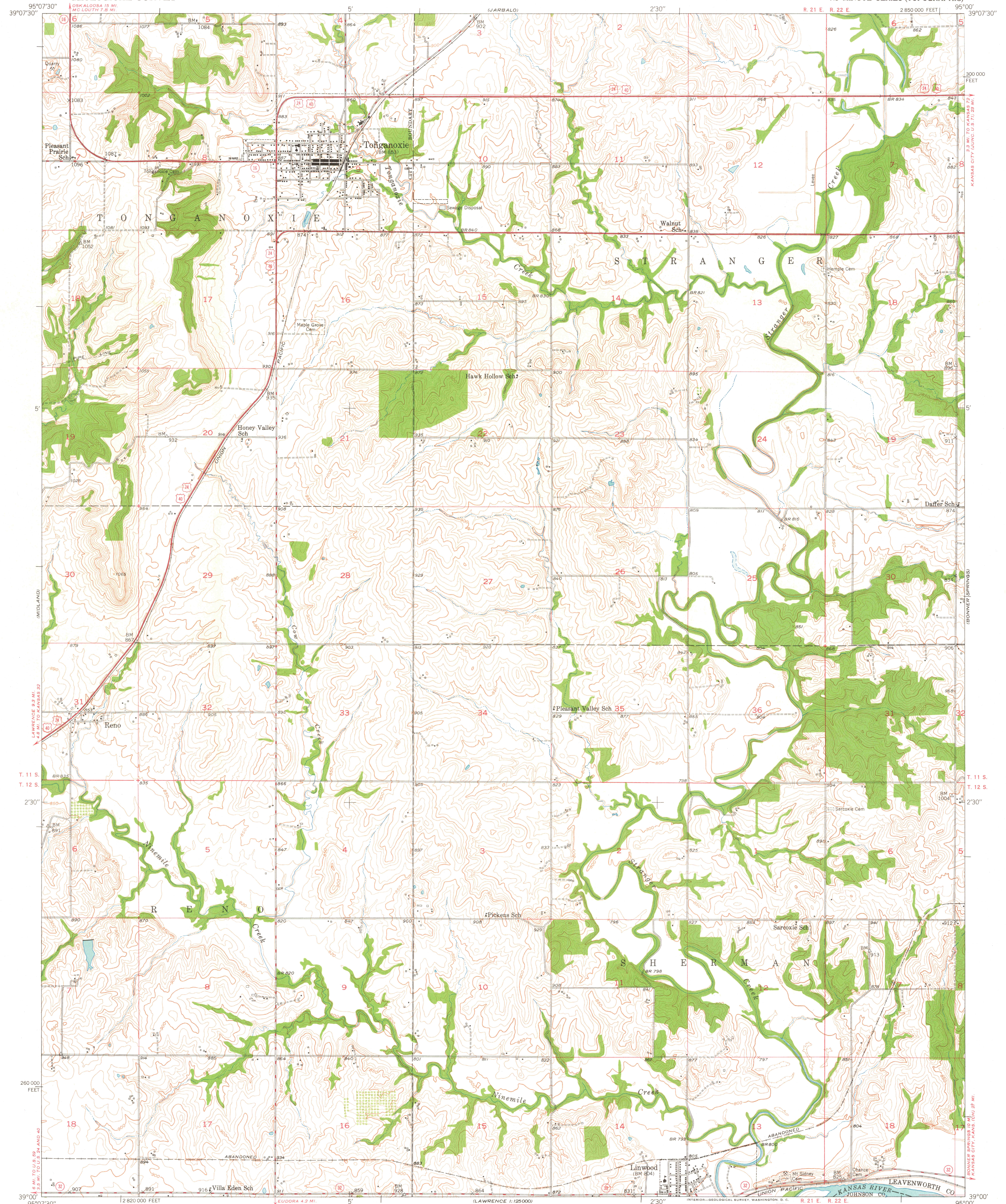
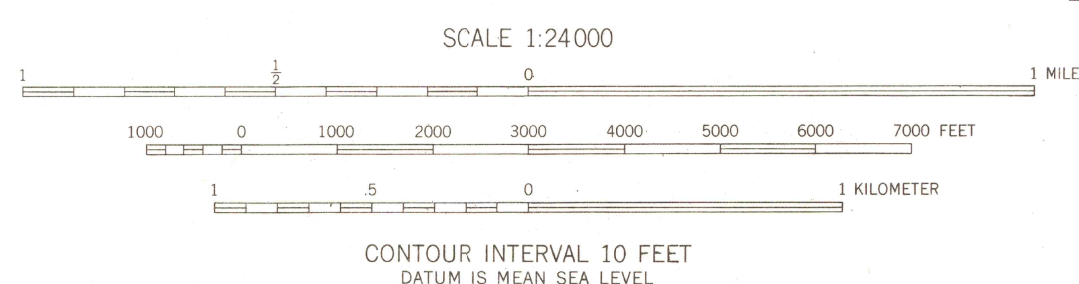


(MCCURTNEY)

(BASEVOR)



Mapped, edited, and published by the Geological Survey
Control by USGS and USC&GS
Topography from aerial photographs by multiplex methods
Aerial photographs taken 1948. Field check 1950
Polyconic projection. 1927 North American datum
10,000-foot grid based on Kansas coordinate system,
north zone



USGS
Historical File
Topographic Division

ROAD CLASSIFICATION

HARD-SURFACE ALL WEATHER ROADS	DRY WEATHER ROADS
Heavy-duty <u>4 LANE</u> <u>BL</u> <u>BL</u>	Improved dirt <u>2 LANE</u> <u>BL</u>
Medium-duty <u>4 LANE</u> <u>BL</u> <u>BL</u>	Unimproved dirt <u>2 LANE</u> <u>BL</u>
Loose-surface, graded, or narrow hard-surface	
U. S. Route	State Route

U.S.G.S.
FILE COPY
TOPOGRAPHIC DIVISION

TONGANOXIE, KANS.
N3900-W9500/7.5

THIS MAP COMPLIES WITH NATIONAL MAP ACCURACY STANDARDS
FOR SALE BY U. S. GEOLOGICAL SURVEY, FEDERAL CENTER, DENVER, COLORADO OR WASHINGTON 25, D. C.
AND BY THE STATE GEOLOGICAL SURVEY, LAWRENCE, KANSAS
A FOLDER DESCRIBING TOPOGRAPHIC MAPS AND SYMBOLS IS AVAILABLE ON REQUEST

EDITION OF 1951

JUL 26 1951

1230