

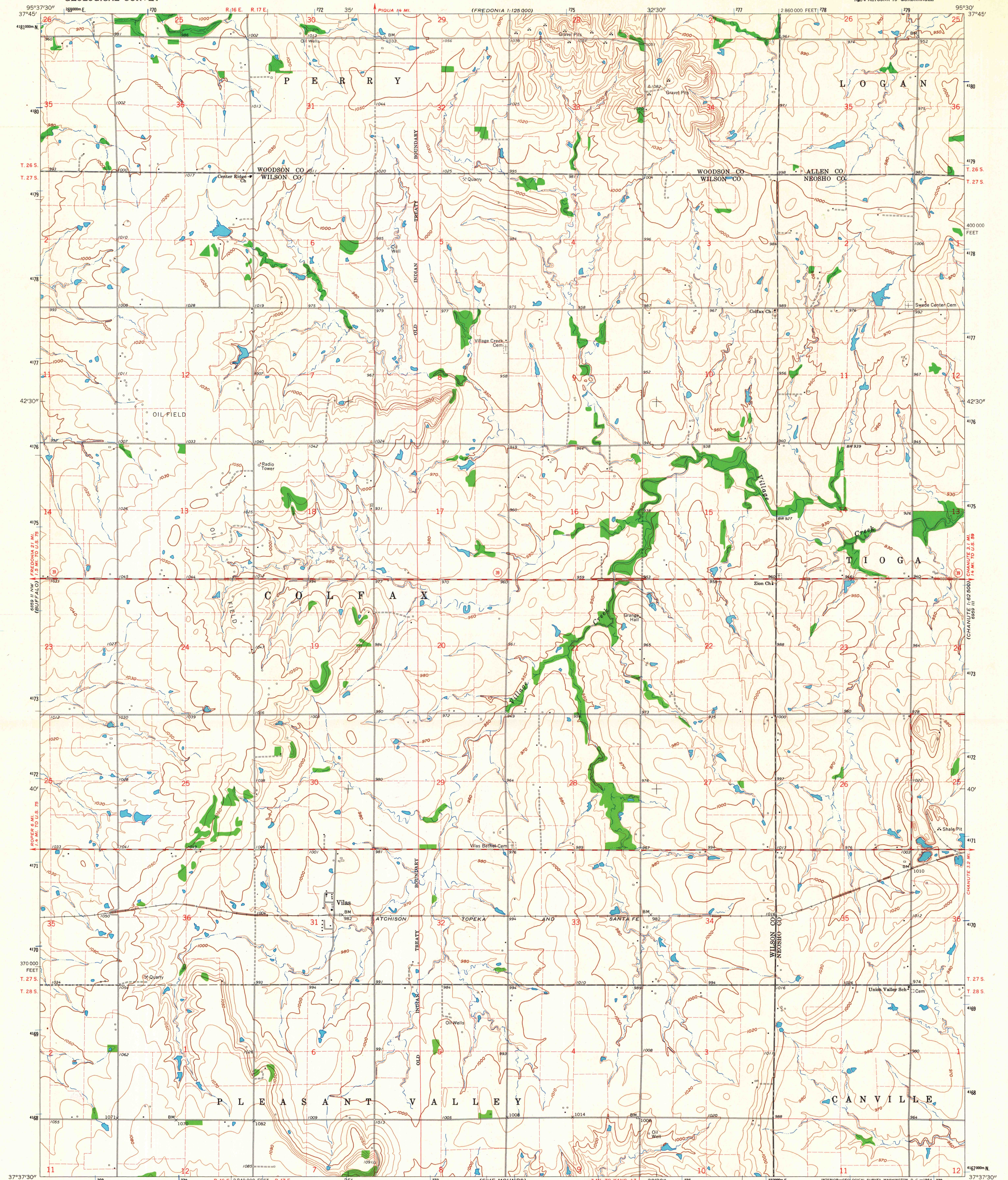
(FREDONIA)  
1:125,000

UNITED STATES  
DEPARTMENT OF THE INTERIOR  
GEOLOGICAL SURVEY

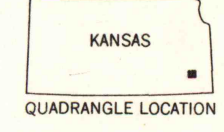
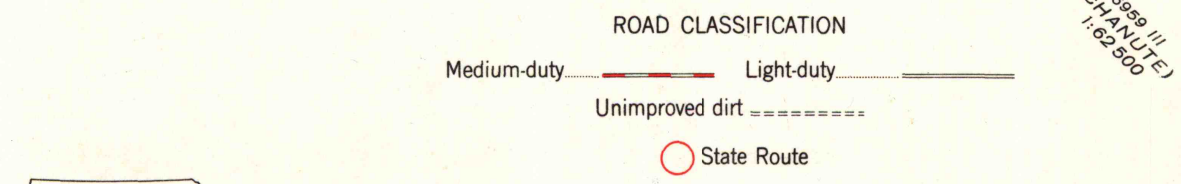
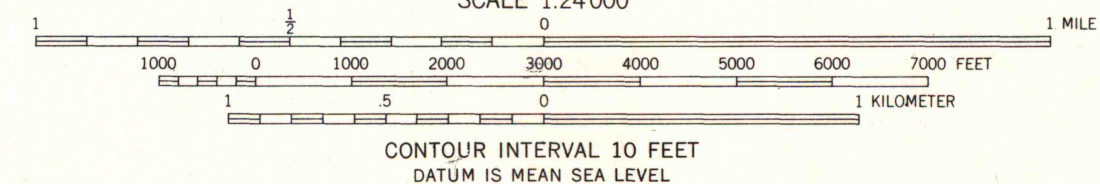
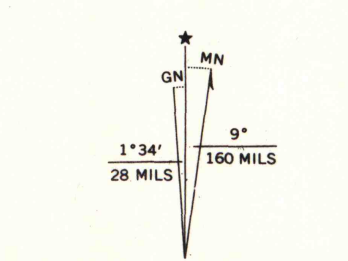
STATE OF KANSAS

VILAS QUADRANGLE  
KANSAS  
7.5 MINUTE SERIES (TOPOGRAPHIC)  
NE 1/4 ALTONA 15' QUADRANGLE

(ALTONA)  
1:125,000



Mapped, edited, and published by the Geological Survey  
in cooperation with State of Kansas agencies  
Control by USGS and USC&GS  
Topography by photogrammetric methods from aerial  
photographs taken 1961. Field checked 1963  
Polyconic projection. 1927 North American datum  
10,000-foot grid based on Kansas coordinate system, south zone  
1000-meter Universal Transverse Mercator grid ticks,  
zone 15, shown in blue  
Fine red dashed lines indicate selected fence and field lines where  
generally visible on aerial photographs. This information is unchecked



THIS MAP COMPLIES WITH NATIONAL MAP ACCURACY STANDARDS  
FOR SALE BY U. S. GEOLOGICAL SURVEY, DENVER 25, COLORADO OR WASHINGTON 25, D. C.  
AND BY THE STATE GEOLOGICAL SURVEY, LAWRENCE, KANSAS  
A FOLDER DESCRIBING TOPOGRAPHIC MAPS AND SYMBOLS IS AVAILABLE ON REQUEST

VILAS, KANS.  
NE 1/4 ALTONA 15' QUADRANGLE  
N 37° 37' 30" W 95° 30' 00" E

MAP AND AIR PHOTO LIBRARY  
University of Wisconsin

1963  
AMS 6859 II NE-SERIES V878