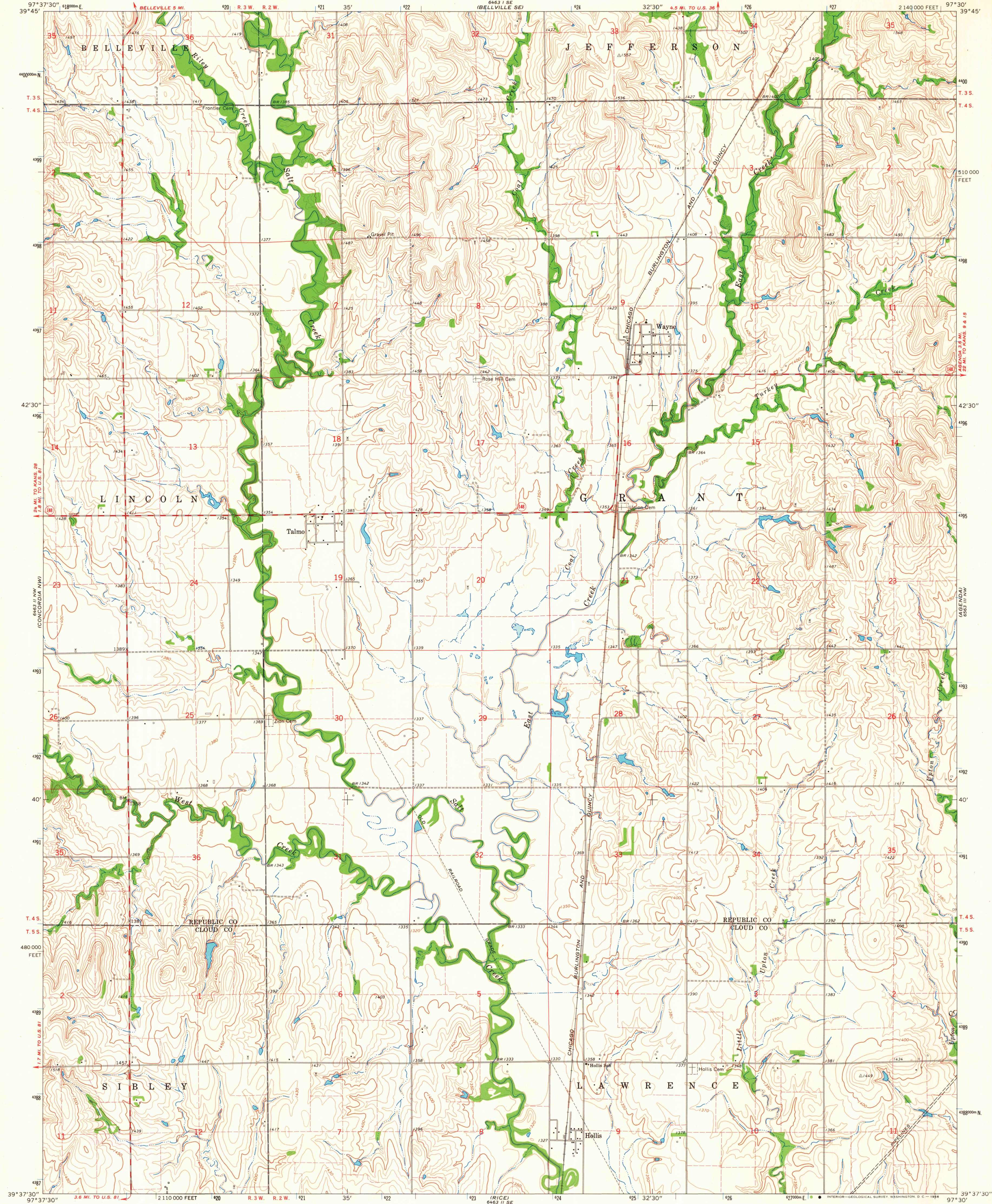


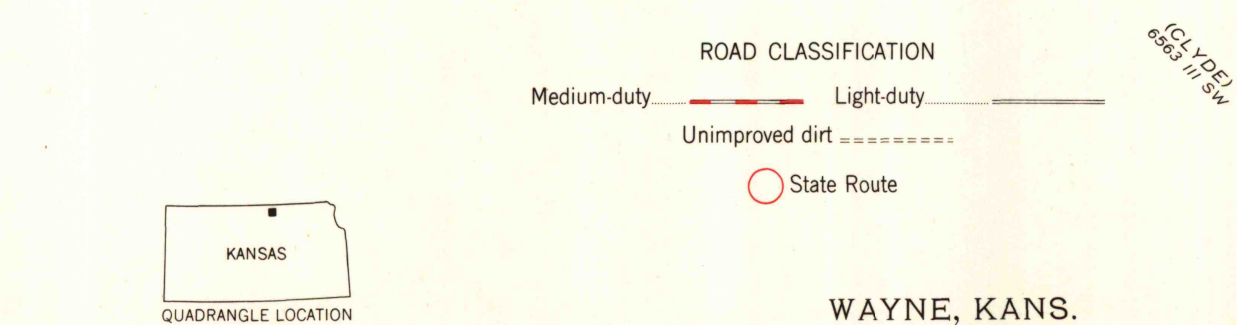
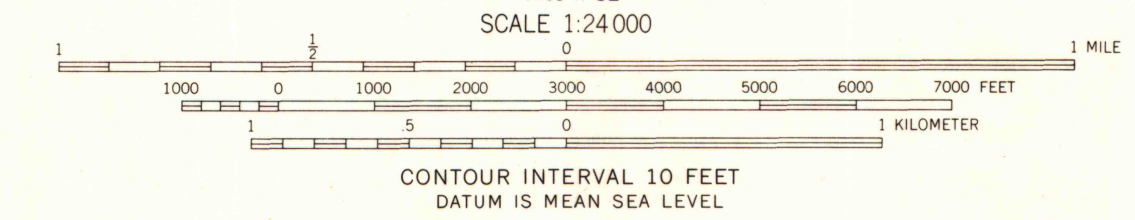
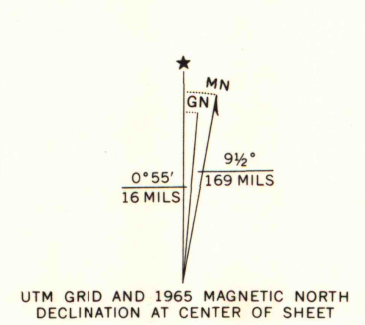
6463 13W  
BELLVILLE

UNITED STATES  
DEPARTMENT OF THE INTERIOR  
GEOLOGICAL SURVEY

WAYNE QUADRANGLE  
KANSAS  
7.5 MINUTE SERIES (TOPOGRAPHIC)



Mapped, edited, and published by the Geological Survey  
Control by USGS and USC&GS  
Topography by photogrammetric methods from aerial  
photographs taken 1961. Field checked 1965  
Polyconic projection. 1927 North American datum  
10,000-foot grid based on Kansas coordinate system, north zone  
1000-meter Universal Transverse Mercator grid ticks,  
zone 14, shown in blue  
Fine red dashed lines indicate selected fence and field lines where  
generally visible on aerial photographs. This information is unchecked



THIS MAP COMPLIES WITH NATIONAL MAP ACCURACY STANDARDS  
FOR SALE BY U.S. GEOLOGICAL SURVEY, DENVER, COLORADO 80225 OR WASHINGTON, D.C. 20242  
AND BY THE STATE GEOLOGICAL SURVEY, LAWRENCE, KANSAS  
A FOLDER DESCRIBING TOPOGRAPHIC MAPS AND SYMBOLS IS AVAILABLE ON REQUEST

WAYNE, KANS.  
N3937.5-W9730/7.5  
1965  
AMS 6463 11 NE-SERIES V878

(CONCORDIA)  
6463 11 NW

(CLYDE)  
6463 11 SW