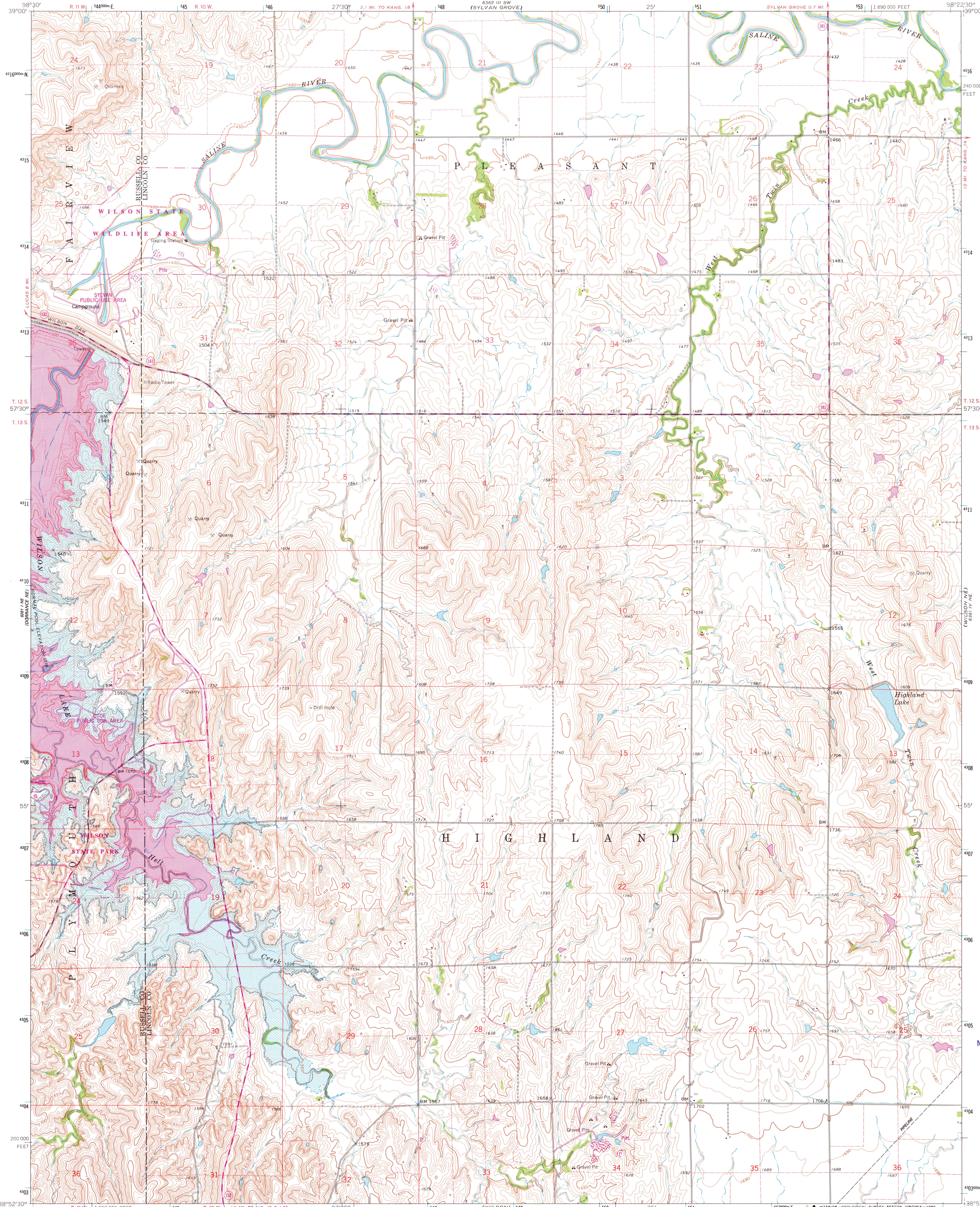
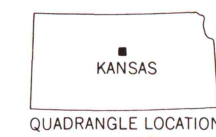
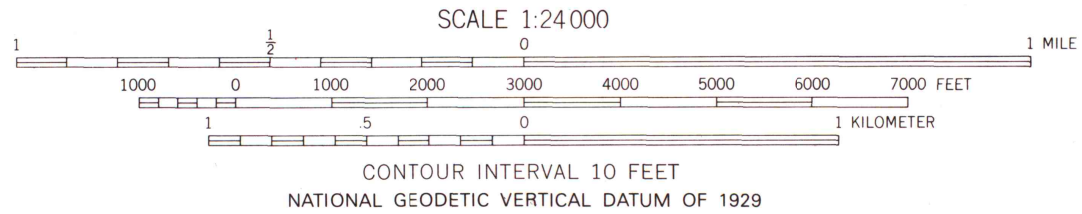
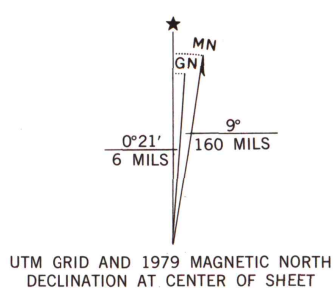


UNITED STATES
DEPARTMENT OF THE INTERIOR
GEOLOGICAL SURVEY

WILSON NW QUADRANGLE
KANSAS
7.5 MINUTE SERIES (TOPOGRAPHIC)



Mapped, edited, and published by the Geological Survey
Control by USGS and USC&GS
Topography by photogrammetric methods from aerial photographs taken 1959. Field checked 1963-64
Polyconic projection. 1927 North American datum
10,000-foot grid based on Kansas coordinate system, north zone
1000-meter Universal Transverse Mercator grid ticks, zone 14, shown in blue
Areas covered by dashed light-blue pattern are subject to controlled inundation. Maximum elevation 1554
To place on the predicted North American Datum 1983 move the projection lines 2 meters north and 29 meters east as shown by dashed corner ticks
There may be private inholdings within the boundaries of the National or State reservations shown on this map



ROAD CLASSIFICATION
Primary highway, hard surface ——— Light-duty road, hard or improved surface
Secondary highway, hard surface ——— Unimproved road
Interstate Route ——— U.S. Route ——— State Route

THIS MAP COMPLIES WITH NATIONAL MAP ACCURACY STANDARDS
FOR SALE BY U.S. GEOLOGICAL SURVEY, DENVER, COLORADO 80225, OR RESTON, VIRGINIA 22092
AND STATE GEOLOGICAL SURVEY, LAWRENCE, KANSAS 66044
A FOLDER DESCRIBING TOPOGRAPHIC MAPS AND SYMBOLS IS AVAILABLE ON REQUEST

Revisions shown in purple compiled in cooperation with
State of Kansas agencies from aerial photographs taken
1978. Map edited 1979. This information not field checked

WILSON NW, KANS.
N3852.5—W9822.5/7.5

1964
PHOTOREVISED 1979
DMA 6361 IV NW—SERIES W878

MAP AND AIR PHOTO
LIBRARY
JUN 20 1998
University of Wisconsin
Madison