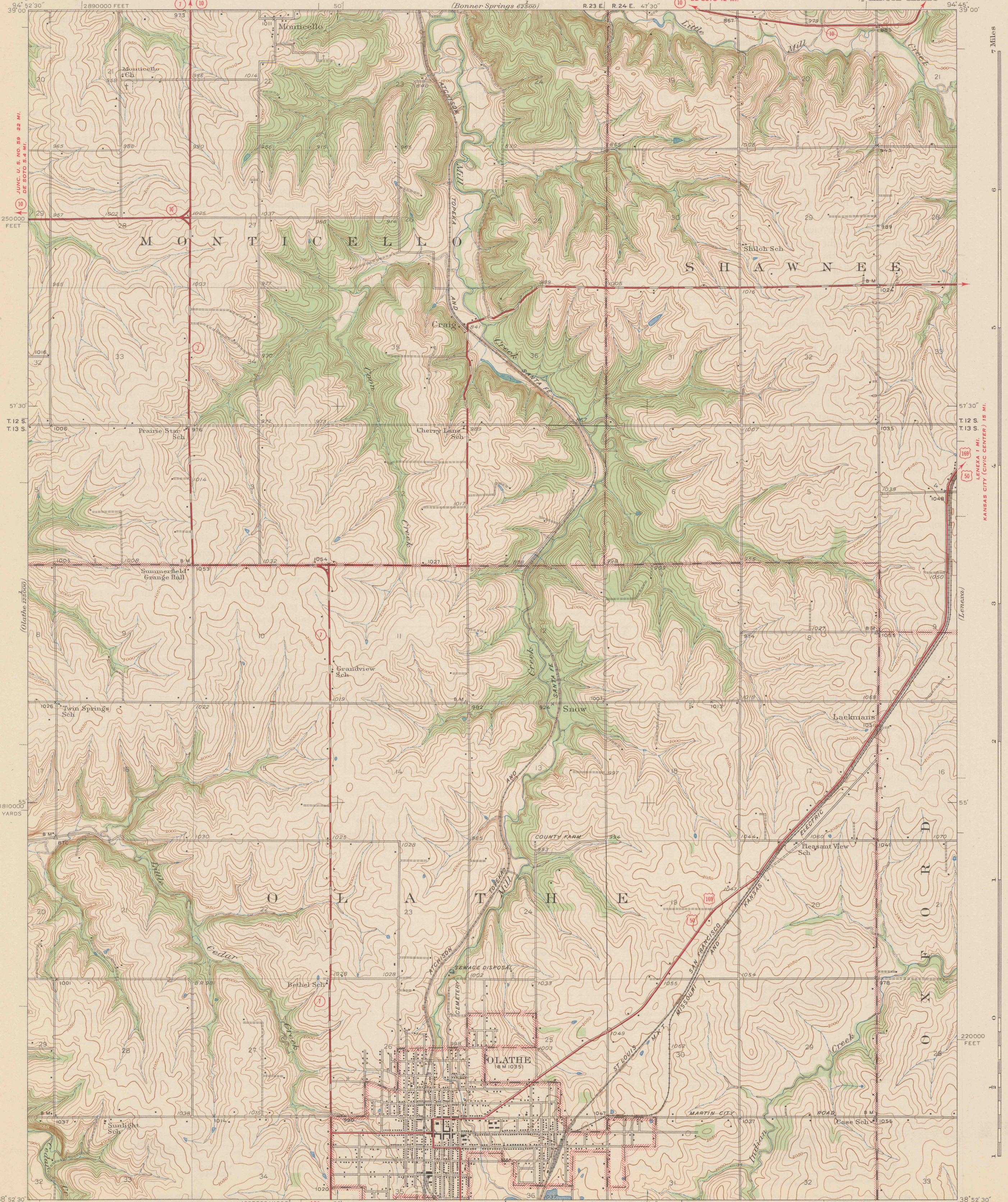


LEAVENWORTH 25.5 MI.  
BONNER SPRINGS 5.5 MI.  
KANSAS CITY (CIVIC CENTER) 19 MI.  
SHAWNEE 9 MI.

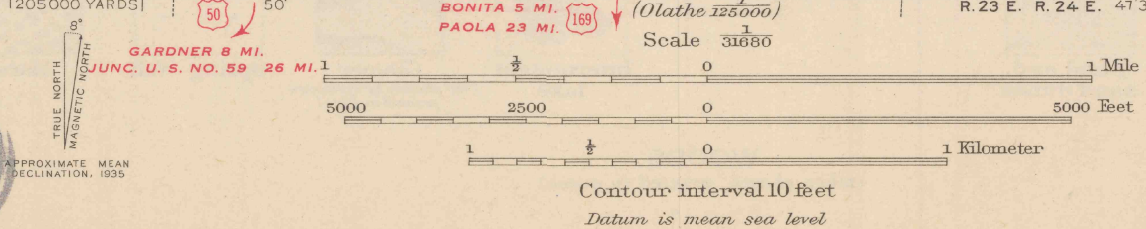
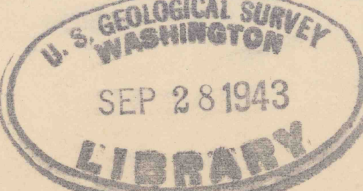
KANSAS CITY (CIVIC CENTER) 13 MI.  
SHAWNEE 3 MI.

UNITED STATES  
DEPARTMENT OF THE INTERIOR  
GEOLOGICAL SURVEY

KANSAS COUNTY  
(JOHNSON COUNTY)  
OLATHE QUADRANGLE  
7 1/2-MINUTE SERIES



Topography by M. J. Harden, S. D. Farmer,  
J. M. Holmes, D. E. Crangle, and F. H. Nelson  
Surveyed in 1935



Polyconic projection, 1927 North American datum  
5000 yard grid based on U.S. zone system, D  
10000 foot grid based on Kansas (North)  
rectangular coordinate system

ROUTES USUALLY TRAVELED  
HARD IMPERVIOUS SURFACES  
OTHER SURFACE IMPROVEMENTS  
U. S. ROUTE 1943 STATE ROUTE

OLATHE, KANS.  
Edition of 1943

N3852.5-W9445/7.5