

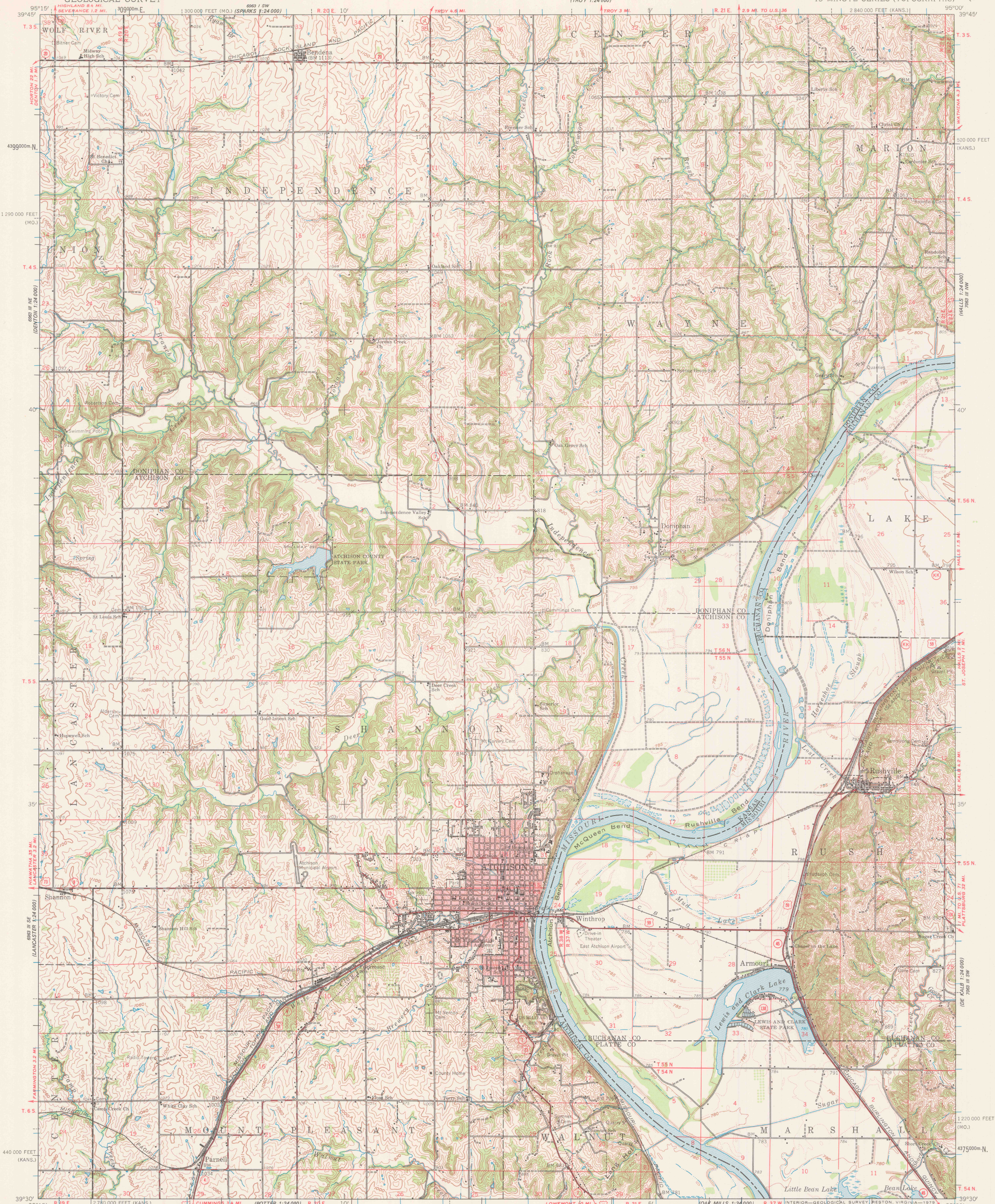
6863 I SE
WOLF RIVER
1:24,000

UNITED STATES
DEPARTMENT OF THE INTERIOR
GEOLOGICAL SURVEY

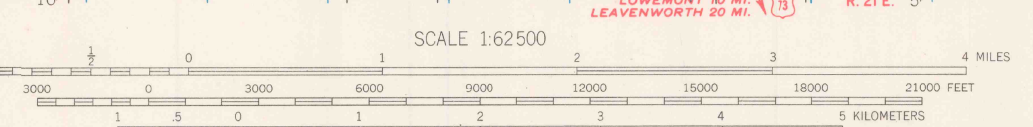
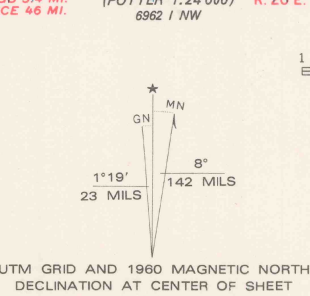


ATCHISON QUADRANGLE
KANSAS—MISSOURI
15 MINUTE SERIES (TOPOGRAPHIC)

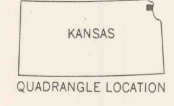
6863 I SE
WOLF RIVER
1:24,000



Maped, edited, and published by the Geological Survey
Control by USGS, USC&GS, and USCE
Compiled in 1961 from 1:24 000 scale maps of
Atchison NE, Benders, Atchison West, and Atchison East
7.5 minute quadrangles, surveyed 1959-1960
Topography from aerial photographs by photogrammetric methods
and by planetable surveys. Aerial photographs taken 1947-1958
Polyconic projection. 1927 North American datum
10,000-foot grids based on Kansas coordinate system, north zone
and Missouri coordinate system, west zone
1000-meter Universal Transverse Mercator grid ticks,
zone 15, shown in blue
Red tint indicates area in which only landmark buildings are shown
There may be private inholdings within the boundaries of
the National or State reservations shown on this map



CONTOUR INTERVAL 20 FEET
DOTTED LINES REPRESENT 5-FOOT CONTOURS
NATIONAL GEODETIC VERTICAL DATUM OF 1929



ROAD CLASSIFICATION

Heavy-duty	Light-duty
Medium-duty	Unimproved dirt
U.S. Route	State Route

ATCHISON, KANS.-MO.
N 3930-W 9500/15
1960
AMS 6863 II-SERIES V778

THIS MAP COMPLIES WITH NATIONAL MAP ACCURACY STANDARDS
FOR SALE BY U.S. GEOLOGICAL SURVEY, DENVER, COLORADO 80225, OR RESTON, VIRGINIA 22092.
STATE GEOLOGICAL SURVEY, LAWRENCE, KANSAS 66044,
AND THE DIVISION OF RESEARCH AND TECHNICAL INFORMATION
MISSOURI DEPARTMENT OF NATURAL RESOURCES, ROLLA, MISSOURI 65401
A FOLDER DESCRIBING TOPOGRAPHIC MAPS AND SYMBOLS IS AVAILABLE ON REQUEST