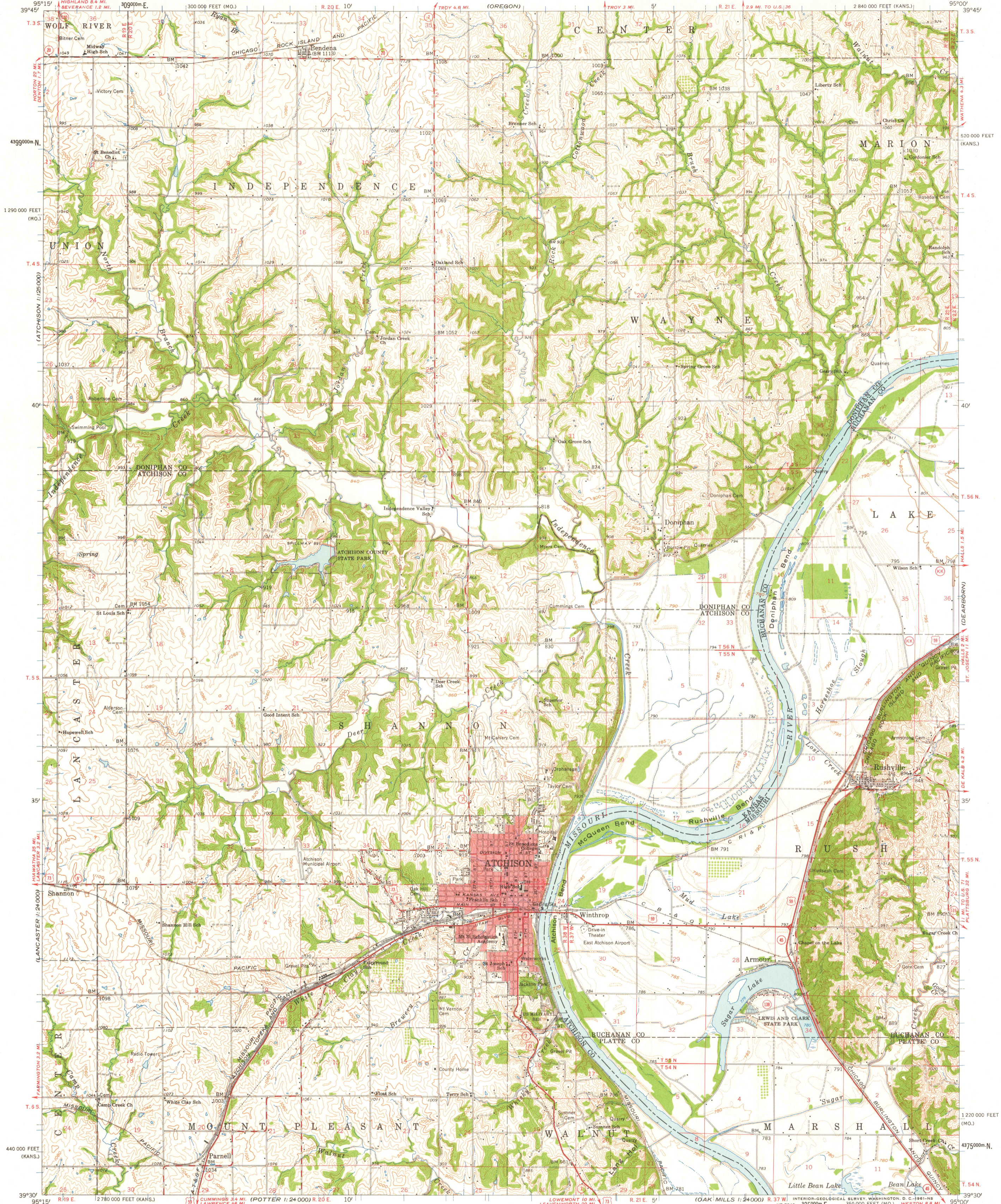


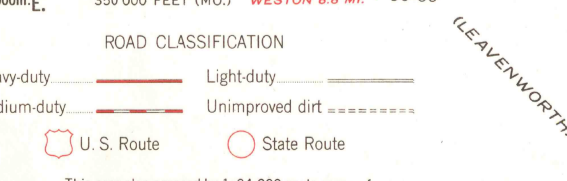
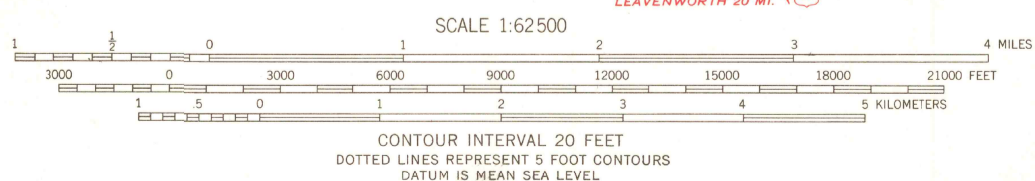
UNITED STATES
DEPARTMENT OF THE INTERIOR
GEOLOGICAL SURVEY

ATCHISON QUADRANGLE
KANSAS—MISSOURI
15 MINUTE SERIES (TOPOGRAPHIC)



Mapped, edited, and published by the Geological Survey

Control by USGS, USC&GS, and USCE
Compiled in 1961 from 1:24 000-scale maps of Atchison NE, Bendena, Atchison West, and Atchison East 7.5 minute quadrangles, surveyed 1959-1960
Topography from aerial photographs by photogrammetric methods and by planetable surveys. Aerial photographs taken 1947-1958
Polyconic projection. 1927 North American datum
10,000-foot grids based on Kansas coordinate system, north zone and Missouri coordinate system, west zone
1000-meter Universal Transverse Mercator grid ticks, zone 15, shown in blue
Red tint indicates area in which only landmark buildings are shown



THIS MAP COMPLIES WITH NATIONAL MAP ACCURACY STANDARDS
FOR SALE BY U. S. GEOLOGICAL SURVEY, DENVER 25, COLORADO OR WASHINGTON 25, D. C.
THE STATE GEOLOGICAL SURVEY, LAWRENCE, KANSAS
AND BY THE MISSOURI GEOLOGICAL SURVEY, ROLLA, MISSOURI
A FOLDER DESCRIBING TOPOGRAPHIC MAPS AND SYMBOLS IS AVAILABLE ON REQUEST

THIS AREA ALSO COVERED BY 1:24 000-SCALE MAPS OF Atchison NE 1959, Bendena 1959, Atchison West 1959, and Atchison East 1960 7.5 minute quadrangles
ATCHISON, KANS.—MO.
N 3930—W 9500/15