

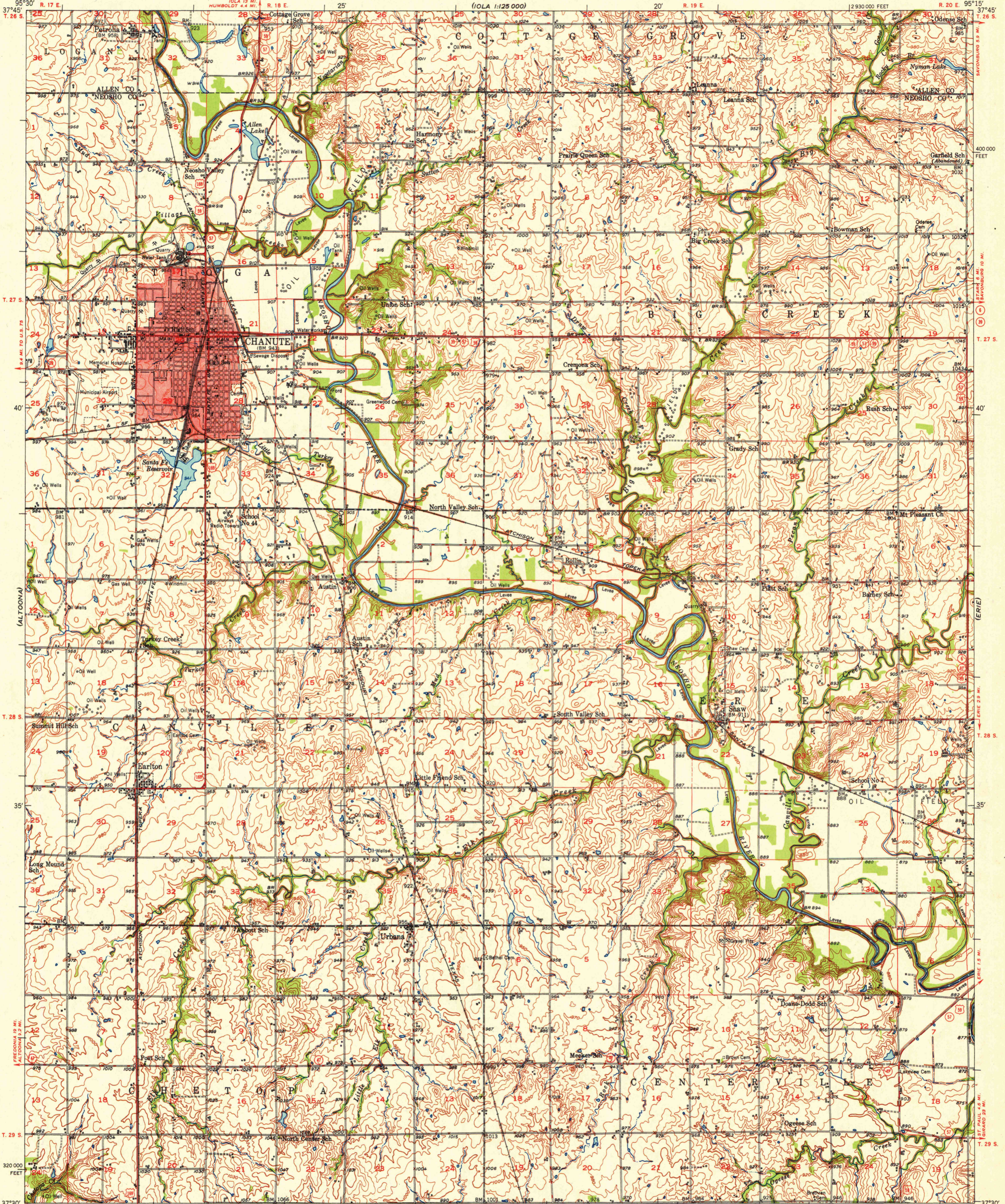
(FREDONIA)
1:125 000

UNITED STATES
DEPARTMENT OF THE INTERIOR
GEOLOGICAL SURVEY

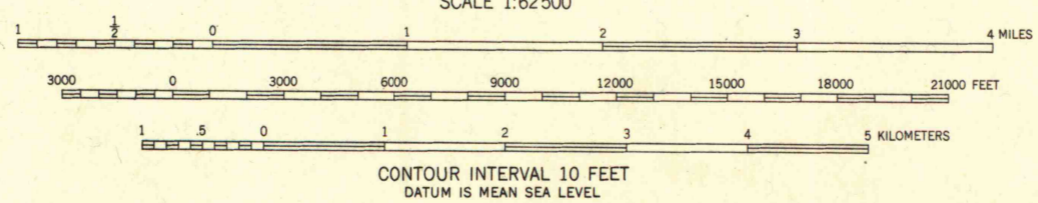
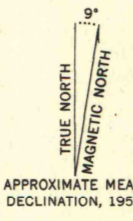
STATE OF KANSAS
UNIVERSITY OF KANSAS
STATE GEOLOGICAL SURVEY
(OLA 1:125 000)

CHANUTE QUADRANGLE
KANSAS
15 MINUTE SERIES (TOPOGRAPHIC)

(OLA 1:125 000)



Mapped, edited, and published by the Geological Survey
Control by USGS and USC&GS
Culture and drainage in part compiled from
aerial photographs taken 1938
Topography by plane-table methods 1949-1950
Polyconic projection. 1927 North American datum
10,000-foot grid based on Kansas coordinate system,
south zone
Red tint indicates area in which only
landmark buildings are shown
Dashed land lines indicate approximate location



ROAD CLASSIFICATION

HARD-SURFACE ALL WEATHER ROADS	DRY WEATHER ROADS
Heavy-duty ————	Improved dirt ————
Medium-duty ————	Unimproved dirt ————
Loose-surface, graded, or narrow hard-surface	-----
U. S. Route	State Route

THIS MAP COMPLIES WITH NATIONAL MAP ACCURACY STANDARDS
FOR SALE BY U. S. GEOLOGICAL SURVEY, FEDERAL CENTER, DENVER, COLORADO OR WASHINGTON 25, D. C.
AND BY THE STATE GEOLOGICAL SURVEY, LAWRENCE, KANSAS
A FOLDER DESCRIBING TOPOGRAPHIC MAPS AND SYMBOLS IS AVAILABLE ON REQUEST

CHANUTE, KANS.
N3730-W9515/15

EDITION OF 1951
MAP AND PHOTO LIBRARY
University of Wisconsin

(INDEPENDENCE)
1:125 000

(MC CUNE)