

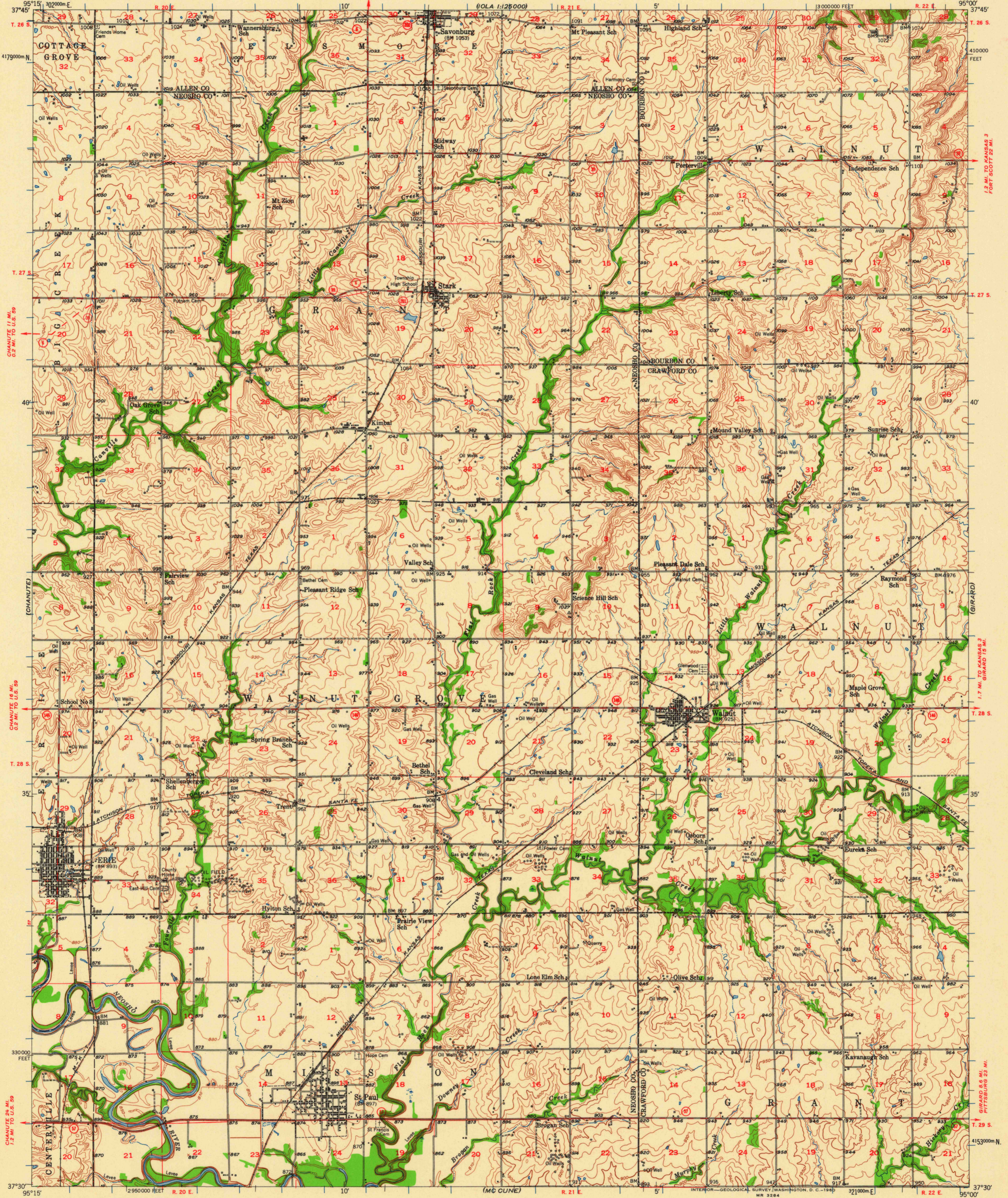
(10LA 1:25000)

UNITED STATES  
DEPARTMENT OF THE INTERIOR  
GEOLOGICAL SURVEY

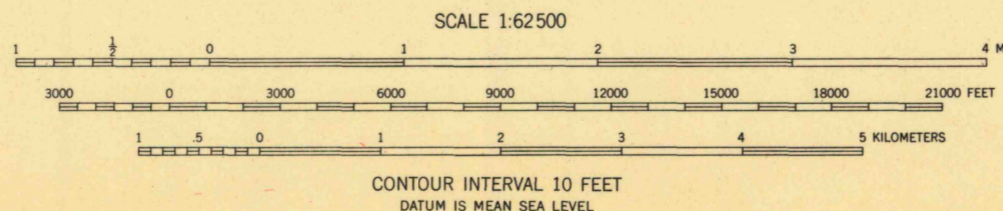
STATE OF KANSAS  
UNIVERSITY OF KANSAS  
STATE GEOLOGICAL SURVEY

ERIE QUADRANGLE  
KANSAS  
15 MINUTE SERIES (TOPOGRAPHIC)

(FORT SCOTT 1:25000)



Mapped, edited, and published by the Geological Survey  
Control by USGS and USC&GS  
Culture and drainage in part compiled from  
aerial photographs taken 1938  
Topography by plane-table methods 1948  
Polyconic projection. 1927 North American datum  
10,000-foot grid based on Kansas coordinate system,  
south zone  
1000-meter Universal Transverse Mercator grid ticks,  
zone 15, shown in blue



ROAD CLASSIFICATION  
Heavy-duty ——— Light-duty ———  
Medium-duty ——— Unimproved dirt ———  
State Route ○

TRUE NORTH  
MAGNETIC NORTH  
APPROXIMATE MEAN  
DECLINATION, 1948

THIS MAP COMPLIES WITH NATIONAL MAP ACCURACY STANDARDS  
FOR SALE BY U. S. GEOLOGICAL SURVEY, DENVER 25, COLORADO OR WASHINGTON 25, D. C.  
AND BY THE STATE GEOLOGICAL SURVEY, LAWRENCE, KANSAS  
A FOLDER DESCRIBING TOPOGRAPHIC MAPS AND SYMBOLS IS AVAILABLE ON REQUEST

ERIE, KANS.  
N3730-W9500/15  
1948

(PARSONS)

(CHEROKEE)