

(Independence)  
1:125,000

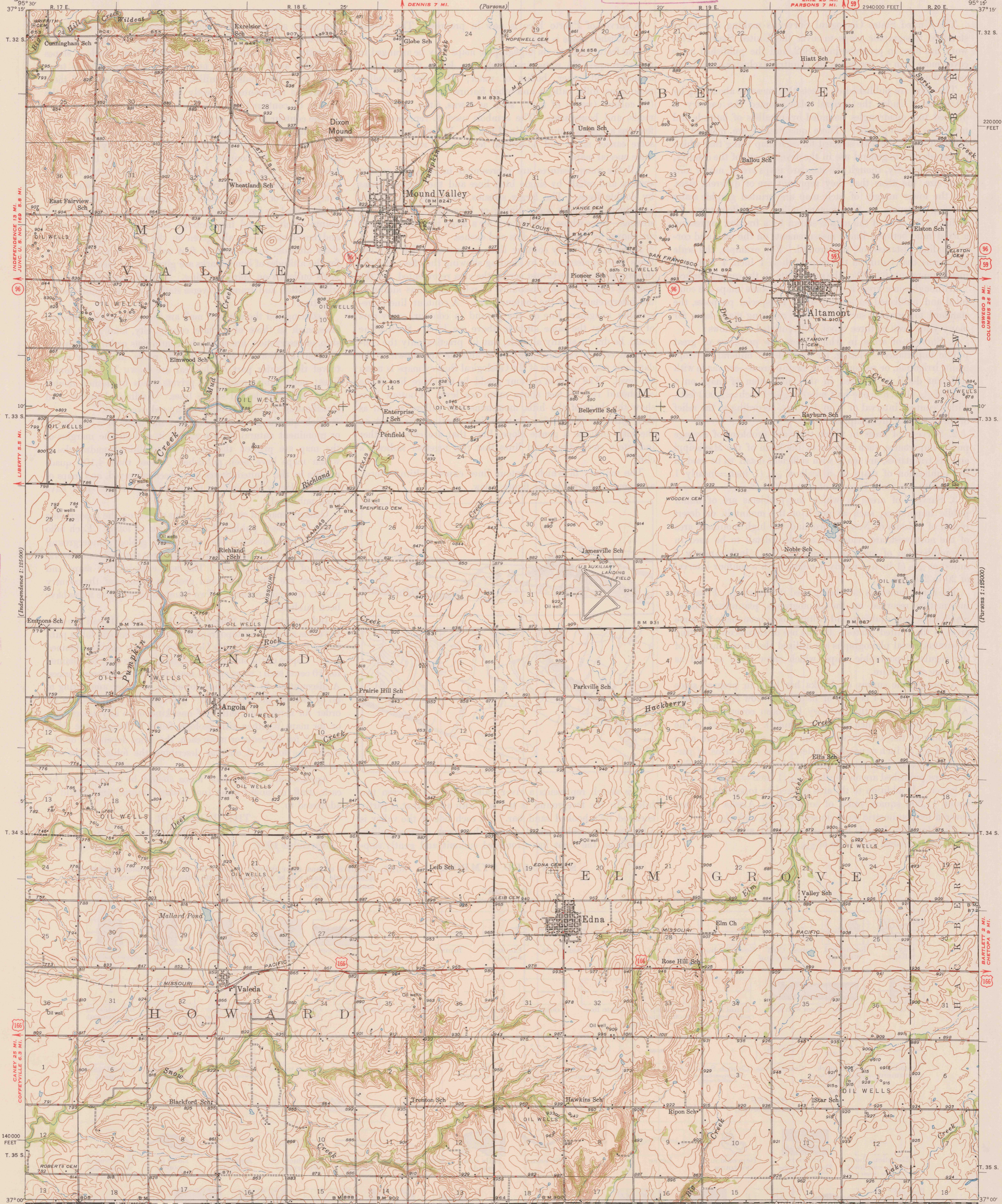
UNITED STATES  
DEPARTMENT OF THE INTERIOR  
GEOLOGICAL SURVEY

STATE OF KANSAS  
UNIVERSITY OF KANSAS  
STATE GEOLOGICAL SURVEY

U. S. G. S.  
**FILE COPY**  
Inspection and Editing.

KANSAS  
(LABETTE COUNTY)  
MOUND VALLEY QUADRANGLE  
15-MINUTE SERIES

(McCombs)



U. S. G. S.  
**FILE COPY**  
Inspection and Editing.

U. S. G. S.  
**FILE COPY**  
Inspection and Editing.

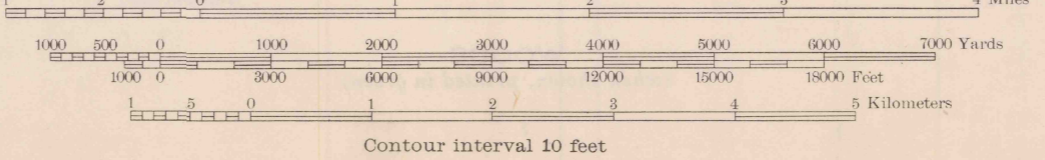
Mapped by the Geological Survey  
1946

KANSAS - OKLAHOMA  
Scale 82500  
Boundary Line

Polycyclic Projection. 1927 North American datum  
10000 foot grid based on Kansas (South)  
rectangular coordinate system

**ROAD CLASSIFICATION**  
1947  
Dependable hard-surface heavy-duty road  
Secondary hard-surface all-weather road  
More than two lanes indicated along road with tick at point of change  
Dry weather roads  
Loose-surface graded  
Unsurfaced, graded  
Dirt road  
U. S. Route 15  
State Route 16

TRUE NORTH  
MAGNETIC NORTH  
APPROXIMATE MEAN DECLINATION, 1946



USGS  
Historical File  
Topographic Division  
**FILE COPY**  
Inspection and Editing.

MOUND VALLEY, KANSAS  
Edition of 1948  
N3700-W9515/15

APR 26 1948 2180