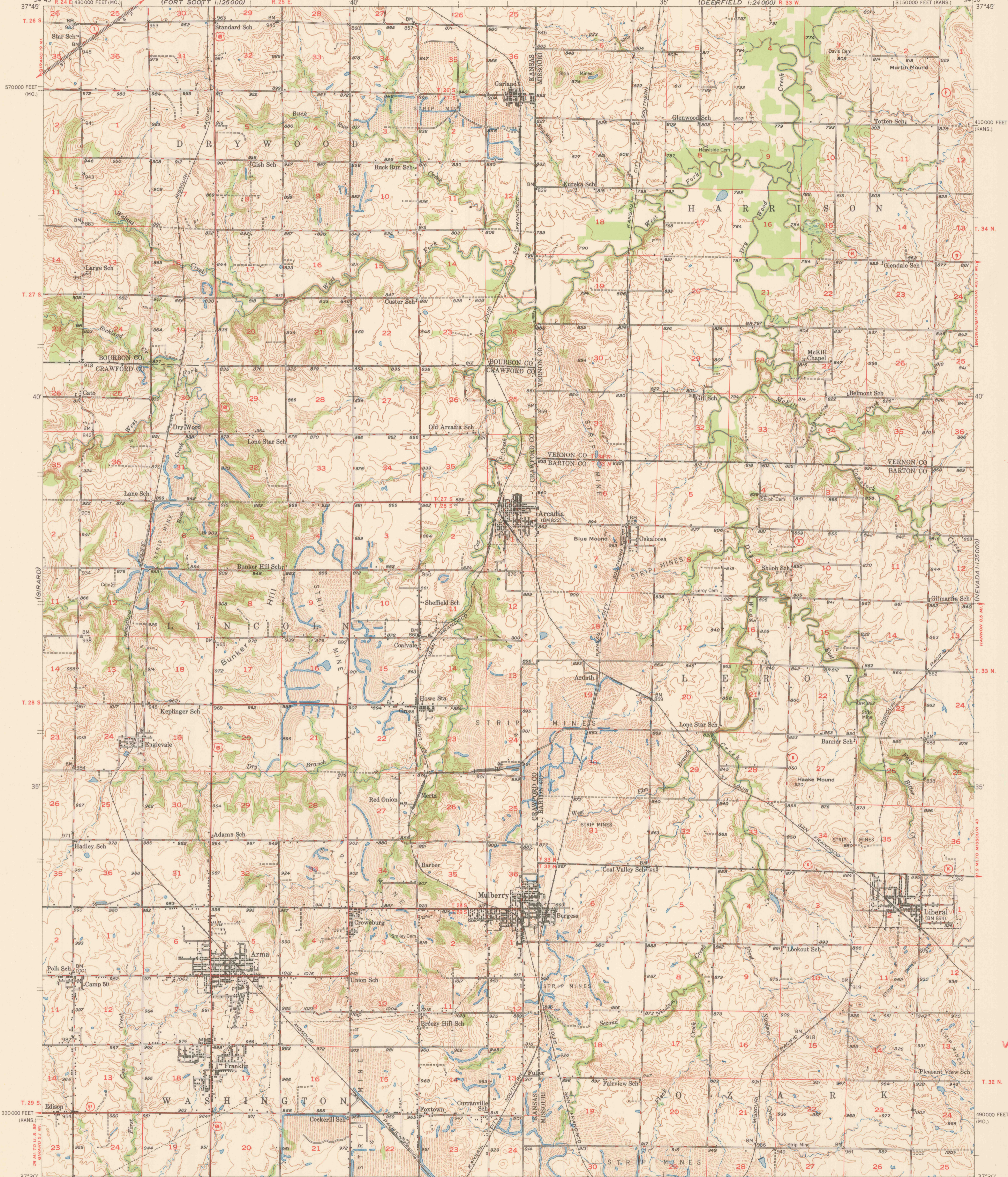


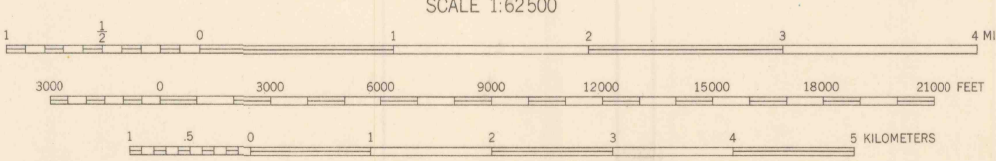
(FORT SCOTT)
1:125000

(MOUNDVILLE)
1:24000



Mapped, edited, and published by the Geological Survey
Control by USGS and USC&GS
Culture and drainage in part compiled from
aerial photographs taken 1938-1939
Topography by plane-table methods 1946-1947-1948
Polyconic projection. 1927 North American datum
10,000-foot grids based on Kansas coordinate system,
south zone and Missouri coordinate system, west zone

FILE COPY
JUN 27 1950
MAP INFORMATION OFFICE
GEOLOGICAL SURVEY



ROAD CLASSIFICATION
HARD-SURFACE ALL-WEATHER ROADS DRY WEATHER ROADS
Heavy-duty LANE LANE Improved dirt
Medium-duty LANE LANE Unimproved dirt
Loose-surface, graded, or narrow hard-surface
U. S. Routes State Routes

MULBERRY, KANS.-MO.
N3730-W9430/15

THIS MAP COMPLIES WITH NATIONAL MAP ACCURACY STANDARDS
FOR SALE BY U. S. GEOLOGICAL SURVEY, FEDERAL CENTER, DENVER, COLORADO OR WASHINGTON 25, D. C.
A FOLDER DESCRIBING TOPOGRAPHIC MAPS AND SYMBOLS IS AVAILABLE ON REQUEST

(COLUMBUS)

(COPHAGEN)
1:125000