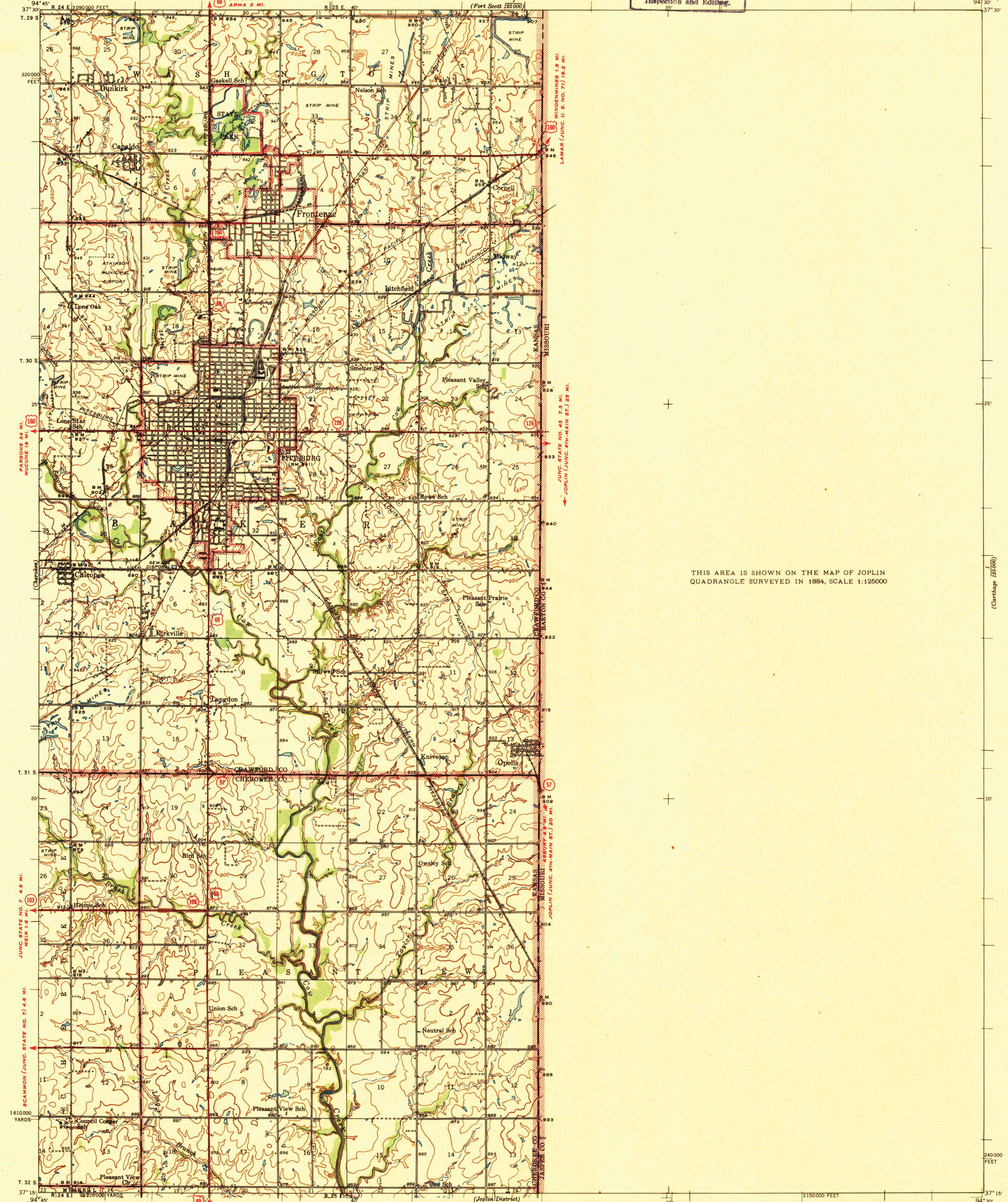


UNITED STATES
DEPARTMENT OF THE INTERIOR
GEOLOGICAL SURVEY

STATE OF KANSAS
UNIVERSITY OF KANSAS
STATE GEOLOGICAL SURVEY

U. S. G. S.
FILE COPY
Inspection and Editing.

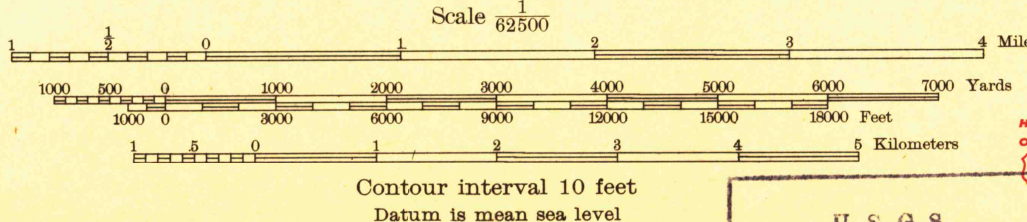
KANSAS-MISSOURI
PITTSBURG QUADRANGLE
15-MINUTE SERIES



THIS AREA IS SHOWN ON THE MAP OF JOPLIN
QUADRANGLE SURVEYED IN 1884, SCALE 1:125000

Mapped by the Geological Survey
1942
CRESTLINE (JUNC. STATE NO. 96) 4.9 MI.
RIVERTON (JUNC. U. S. NO. 88) 12 MI.

APPROXIMATE MEAN
DECLINATION, 1942



USGS
Historical File
Topographic Division

ROUTES USUALLY TRAVELED
HARD IMPERVIOUS SURFACES
OTHER SURFACE IMPROVEMENTS
U. S. ROUTE 1948 STATE ROUTE

Polyconic projection. 1927 North American datum
5000 yard grid based on U. S. zone system, D
10000 foot grid based on Kansas (South)
rectangular coordinate system
To join Joplin District map
use dotted projection corners.

PITTSBURG, KANS.-MO.
Edition of 1945
N3715-W9430/15

U. S. G. S.
FILE COPY
Inspection and Editing.

(2136)

2136